

VILLAGE OF ORLAND PARK, ILLINOIS

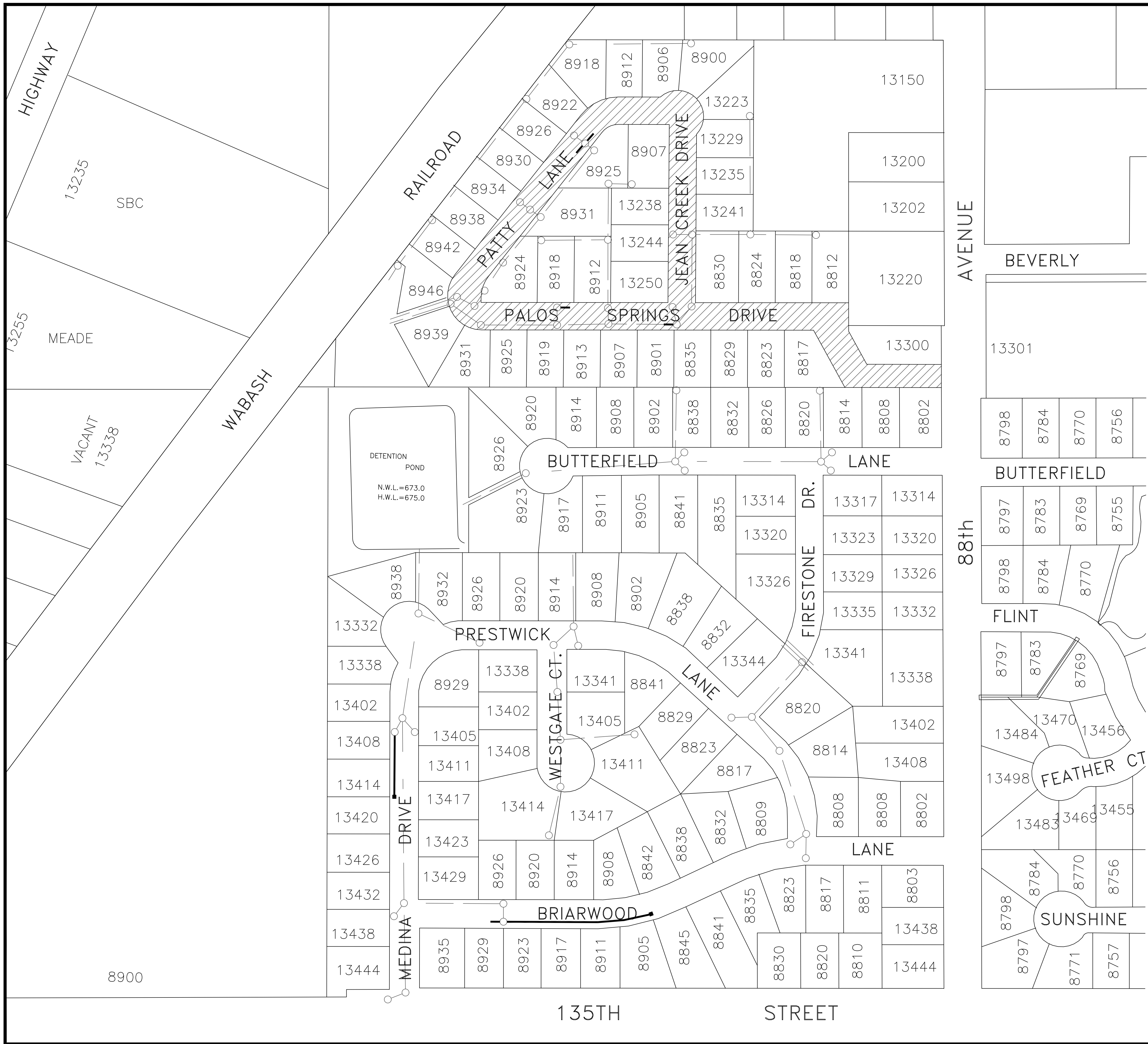
INVITATION TO BID

2011 Road Improvement Program

Addendum #1

May 17, 2011

Revised Page 4 of 7 of Plan Set – Quantity List has been updated
(clarification only - no impact on bid amount)



LEGEND

Existing Storm Sewer

Existing Storm Structure

Proposed 24 in. Inlet

Proposed 6 in. PVC Drain

- Palos Springs & Offsite Underdrain**
- | | |
|-------------------------------------------------------|-----------|
| 01. PORTLAND CEMENT CONCRETE SIDEWALK 5 INCH | 1600 S.F. |
| 02. SIDEWALK REMOVAL | 1600 S.F. |
| 03. DETECTABLE WARNINGS | 48 S.F. |
| 04. COMBINATION CONCRETE CURB & GUTTER, TYPE M-2.12 | 480 L.F. |
| 06. COMBINATION CURB & GUTTER REMOVAL | 480 L.F. |
| 08. SHOTCRETE CURB REPAIR | 170 L.F. |
| 09. REMOVE & REPLACE 6" P.C.C. DRIVEWAY PAVEMENT | 180 S.F. |
| 10. REMOVE & REPLACE 2.5" ASPHALT DRIVEWAY PAVEMENT | 20 S.Y. |
| 15. HOT-MIX ASPHALT SURFACE REMOVAL, 1-3/4" | 7000 S.Y. |
| 17. BITUMINOUS MATERIALS (PRIME COAT) | 770 GAL. |
| 20. CLASS D PATCHES- VARIOUS TYPES | 300 TON |
| 22. MIXTURE FOR CRACKS, JOINTS AND FLANGEWAYS | 1 TON |
| 25. TRENCH BACKFILL- CA-7 | 40 TON |
| 26. TRENCH BACKFILL- CA-6 | 40 TON |
| 27. POLYMERIZED LEVELING BINDER (MACHINE METHOD), N50 | 400 TON |
| 28. HOT-MIX ASPHALT SURFACE COURSE, MIX "C" N50 | 800 TON |
| 29. STRIP REFLECTIVE CRACK CONTROL TREATMENT | 100 S.F. |
| 32. SODDING (& TOPSOIL) | 140 S.Y. |
| 33. PIPE UNDERDRAIN, 6" PERFORATED PVC | 550 L.F. |
| 34. INLET, TYPE A, FRAME & LID | 2 EA. |
| 35. FRAME & LID TO BE ADJUSTED (STEEL RING) | 1 EA. |
| 36. MANHOLE/INLET TO BE ADJUSTED | 3 EA. |
| 39. RECONSTRUCT MANHOLE, FLAT SLAB TOP | 1 EA. |
| 40. RE-MORTAR STRUCTURE | 15 EA. |



Revision: Updated Quantity List 5-17-11

Palos Springs & Offsite Underdrain		
SCALE: 1"=100'	2011 Road Improvement Program	DRAWN BY: RJR
DATE: 5-13-11	Village of ORLAND PARK	REVISED: RJR
Public Works Department		DRAWING NO. 4 OF 7