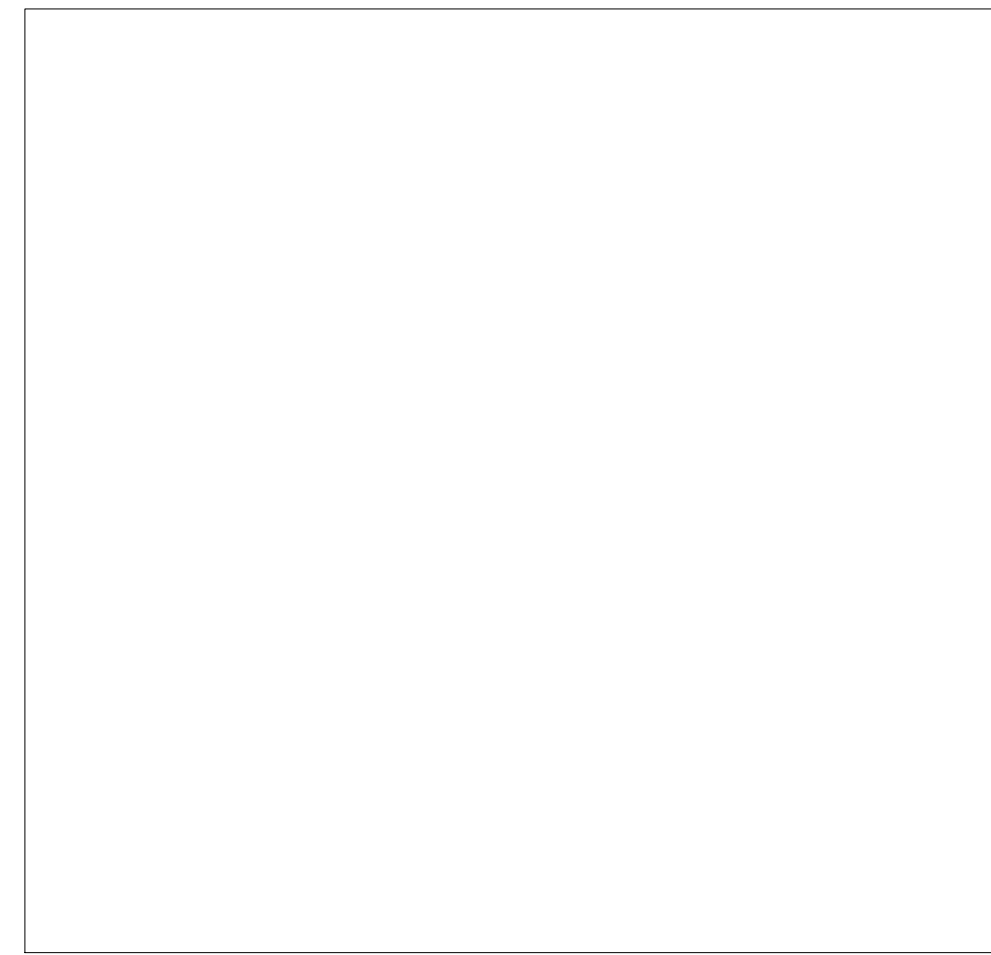


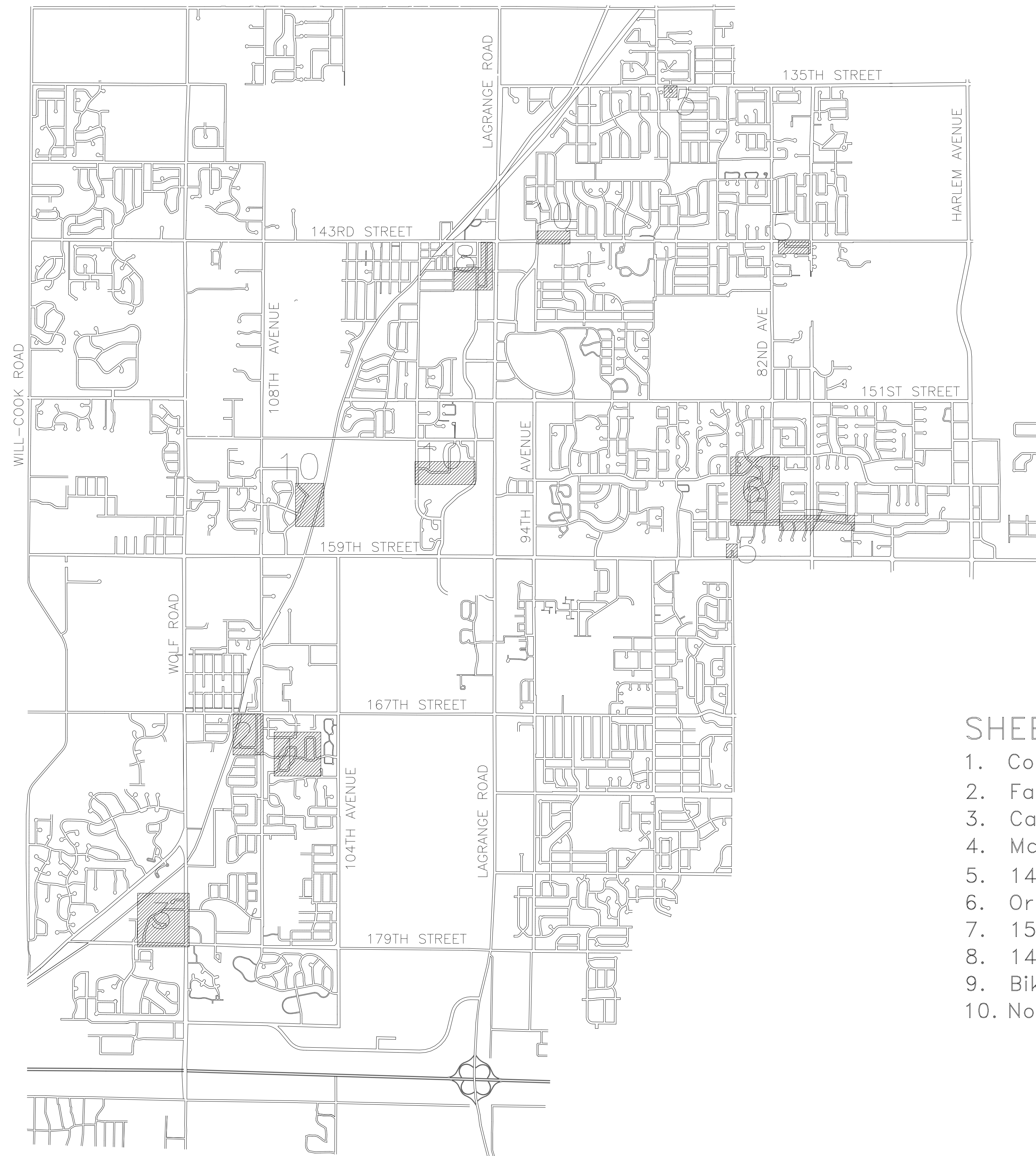
ORLAND PARK 2012 Road Improvement Program



MAYOR
DANIEL J. MCLAUGHLIN

VILLAGE CLERK
DAVID P. MAHER

TRUSTEES
KATHLEEN M. FENTON
BRAD S. O'HALLORAN
JAMES V. DODGE
EDWARD G. SCHUSSLER III
PATRICIA A. GIRA
CAROLE GRIFFIN RUZICH

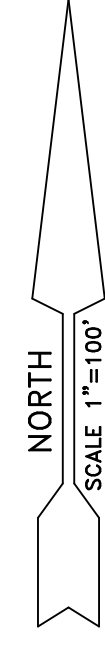
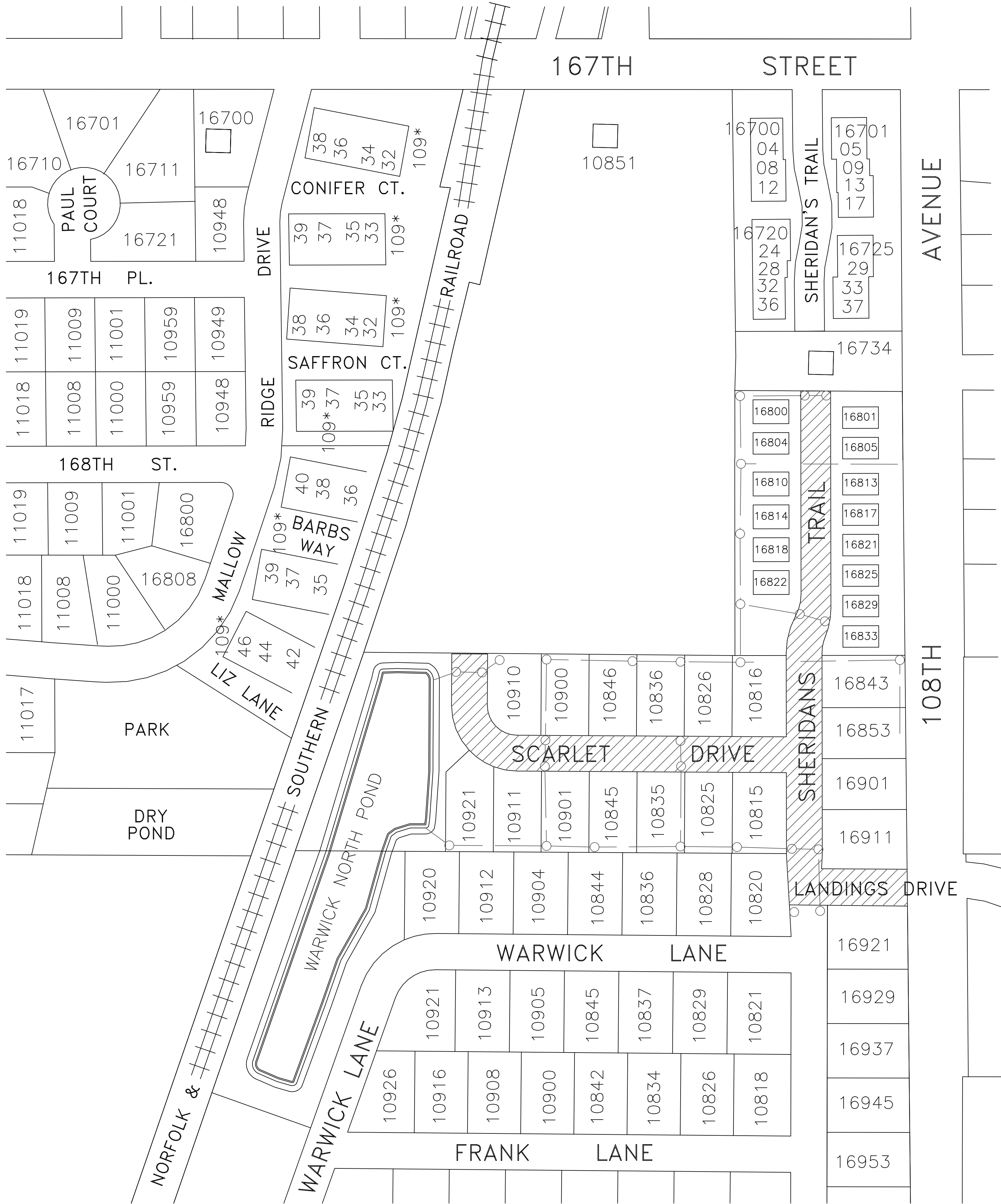


 PROJECT AREA
 SHEET NUMBER

SHEET INDEX

1. Cover Sheet
2. Fawn Ridge/ Vintage Crossing
3. Cambridge Townhomes
4. Mallard Landings
5. 143rd Pl, St.Mary's Cr, 84th Ave
6. Orland Golfview Unit 6
7. 157th Street
8. 144th Place & Jefferson Avenue
9. Bike Paths
10. Notes & Quantities

COVER SHEET		
SCALE: NTS	2012 Road Improvement Program	DRAWN BY: RJR
DATE: 3-27-12		REVISED:
Village of ORLAND PARK		
Public Works Department		DRAWING NO. 1 OF 10



FAWN RIDGE/ VINTAGE CROSSING QUANTITIES

01. PORTLAND CEMENT CONCRETE SIDEWALK 5 INCH	3500 S.F.
02. SIDEWALK REMOVAL	500 S.F.
03. DETECTABLE WARNINGS	90 S.F.
04. COMBINATION CONCRETE CURB & GUTTER, TYPE M-2.12	650 L.F.
06. COMBINATION CURB & GUTTER REMOVAL	650 L.F.
08. SHOTCRETE CURB REPAIR	150 L.F.
09. REMOVE & REPLACE 6" P.C.C. DRIVEWAY PAVEMENT	100 S.F.
12. STAMPED COLORED P.C.C. DRIVEWAY REPAIR, 6 INCH	80 S.F.
16. EARTH EXCAVATION	83 C.Y.
17. HOT-MIX ASPHALT SURFACE REMOVAL- BUTT JOINT	100 S.Y.
20. BITUMINOUS MATERIALS (PRIME COAT)	510 GAL.
22. CLASS D PATCHES- VARIOUS TYPES	180 TON
26. AGGREGATE BASE COURSE, TYPE B	70 TON
28. TRENCH BACKFILL- CA-6	20 TON
29. POLYMERIZED LEVELING BINDER (MACHINE METHOD), N50	270 TON
30. HOT-MIX ASPHALT SURFACE COURSE, MIX "C" N50	580 TON
32. SEEDING, CLASS 1 (& TOPSOIL)	250 S.Y.
33. EROSION CONTROL BLANKET	250 S.Y.
34. SODDING (& TOPSOIL)	100 S.Y.
42. RE-MORTAR STRUCTURE	14 EA.
44. THERMOPLASTIC PAVEMENT MARKING- LINE	150 S.F.

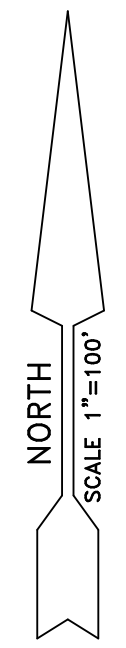
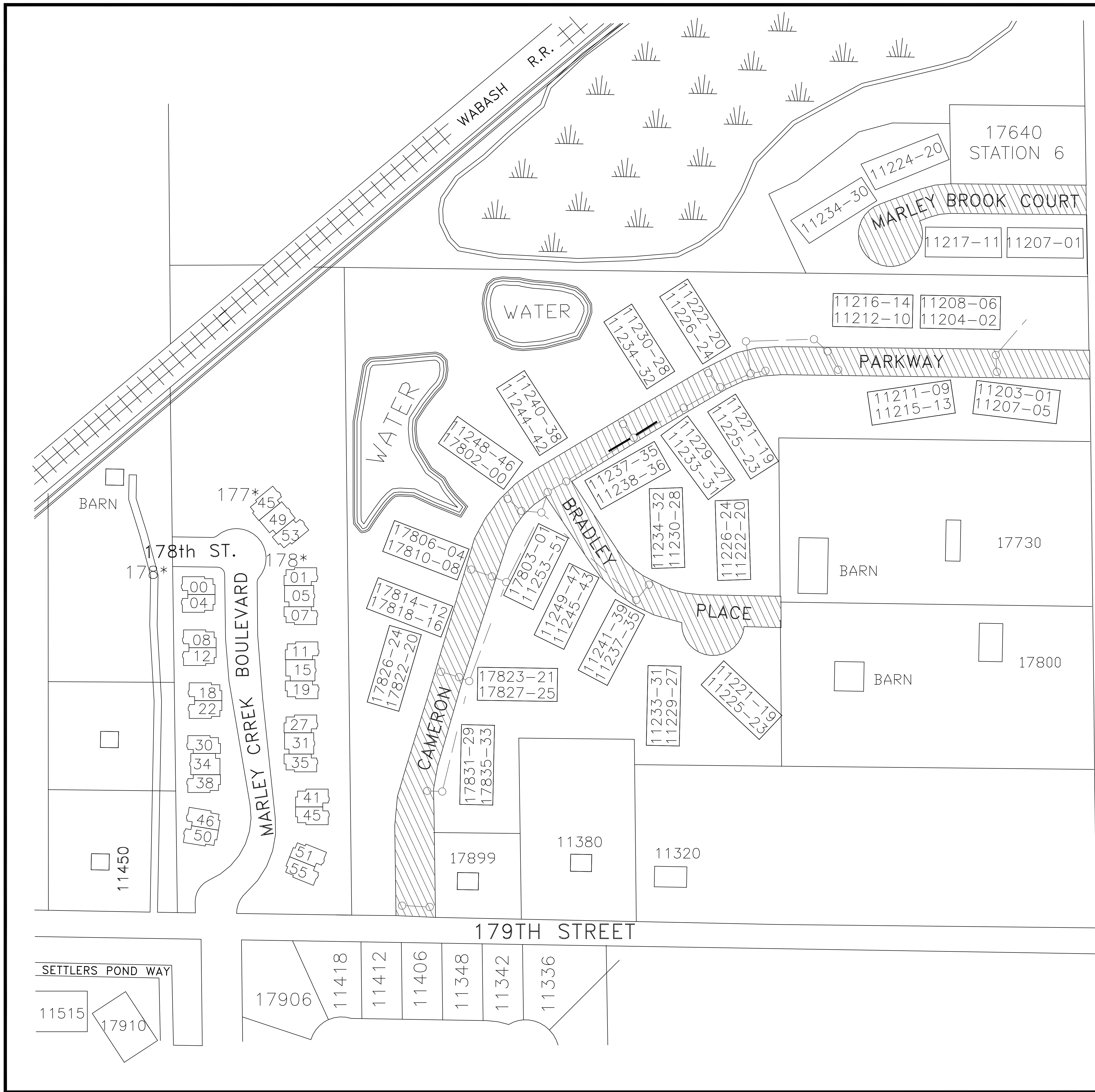
Note:

1. Due to the ongoing residential construction and soil erosion, the existing pavement may require significant cleaning and sweeping prior to paving.
2. The existing roadways in Fawn Ridge/ Vintage Crossing consist of 10" aggregate base course, 2" Binder Course with no Surface Course. In addition to completing the Surface Course paving, the contractor shall repair existing curb & gutter, sidewalk, and existing binder pavement.
3. New P.C.C. sidewalk shall be constructed across vacant properties as directed by the Engineer.

LEGEND

Existing Storm Sewer	—
Existing Storm Structure	○
Proposed 24 in. Inlet	■
Proposed 6 in. PVC Drain	—

Fawn Ridge / Vintage Crossing		
SCALE: 1"=100'	2012 Road Improvement Program	DRAWN BY: RJR
DATE: 3-27-12		REVISED: _____
Village of ORLAND PARK		
Public Works Department		DRAWING NO. 2 OF 10



CAMBRIDGE TOWNHOMES QUANTITIES

01. PORTLAND CEMENT CONCRETE SIDEWALK 5 INCH	1250 S.F.
02. SIDEWALK REMOVAL	1250 S.F.
03. DETECTABLE WARNINGS	80 S.F.
04. COMBINATION CONCRETE CURB & GUTTER, TYPE M-2.12	1250 L.F.
06. COMBINATION CURB & GUTTER REMOVAL	1250 L.F.
07. CONCRETE SLAB RAISING	200 S.F.
08. SHOTCRETE CURB REPAIR	270 L.F.
10. REMOVE & REPLACE 2.5" ASPHALT DRIVEWAY PAVEMENT	80 S.Y.
17. HOT-MIX ASPHALT SURFACE REMOVAL- BUTT JOINT	120 S.Y.
19. HOT-MIX ASPHALT SURFACE REMOVAL- EDGE MILL	5200 S.Y.
20. BITUMINOUS MATERIALS (PRIME COAT)	1000 GAL.
22. CLASS D PATCHES- VARIOUS TYPES	320 TON
27. TRENCH BACKFILL- CA-7	14 TON
28. TRENCH BACKFILL- CA-6	70 TON
29. POLYMERIZED LEVELING BINDER (MACHINE METHOD), N50	410 TON
30. HOT-MIX ASPHALT SURFACE COURSE, MIX "C" N50	1110 TON
31. STRIP REFLECTIVE CRACK CONTROL TREATMENT	50 S.F.
34. SODDING (& TOPSOIL)	300 S.Y.
35. PIPE UNDERDRAIN, 6" PERFORATED PVC	100 L.F.
37. FRAME & LID TO BE ADJUSTED (STEEL RING)	1 EA.
38. MANHOLE/INLET TO BE ADJUSTED	15 EA.
42. RE-MORTAR STRUCTURE	11 EA.
44. THERMOPLASTIC PAVEMENT MARKING- LINE	200 S.F.

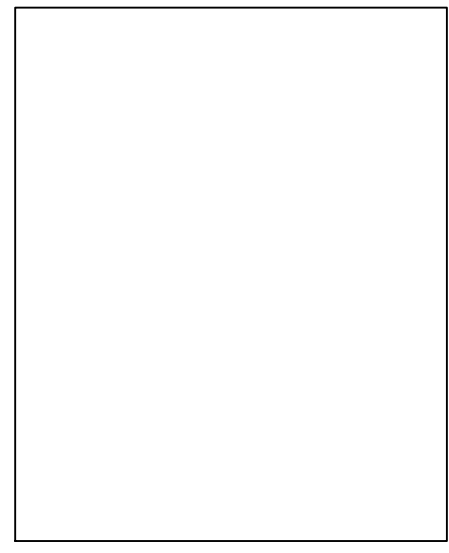
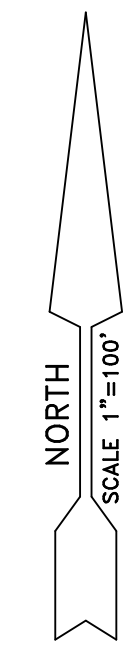
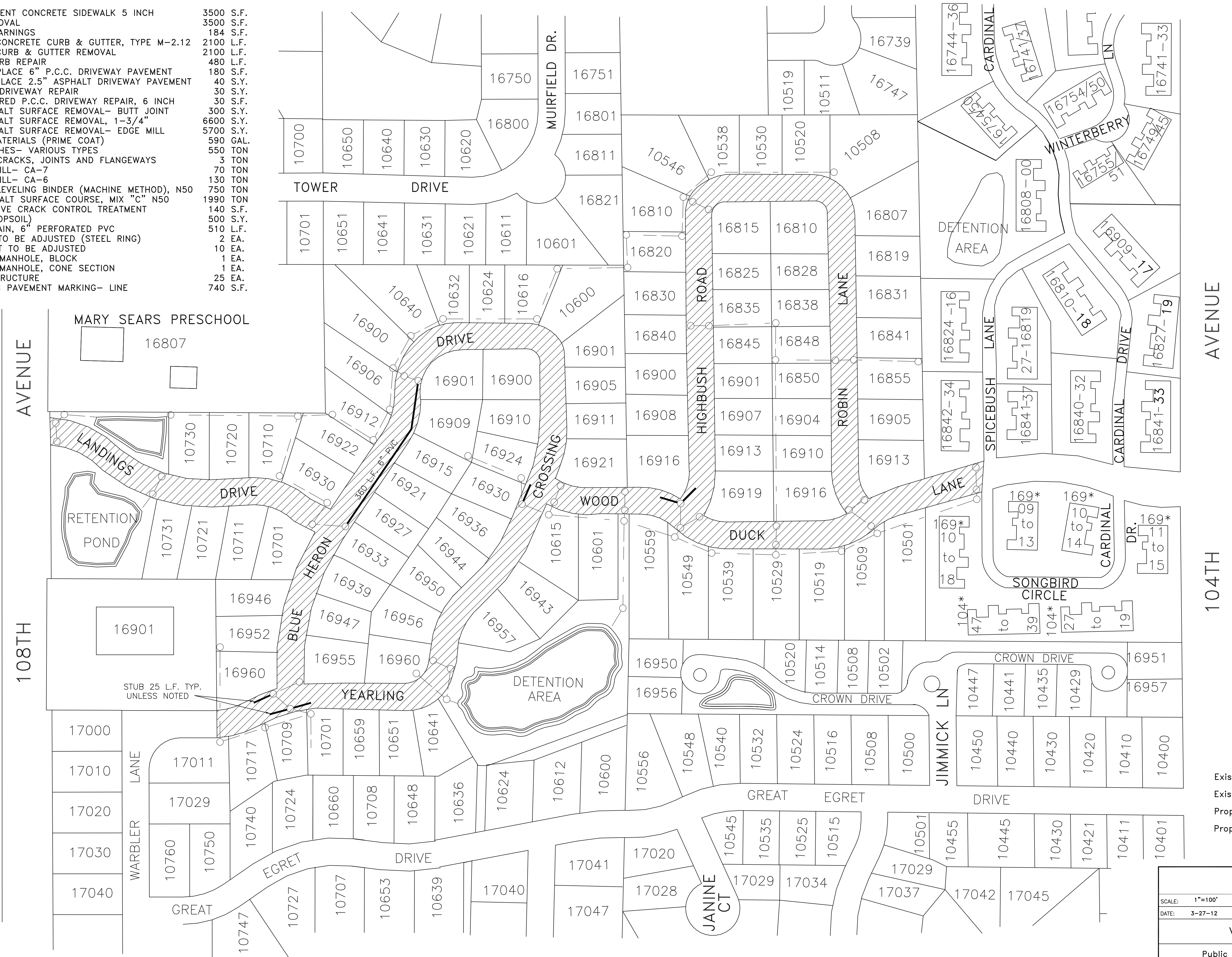
LEGEND

Existing Storm Sewer	—
Existing Storm Structure	○
Proposed 24 in. Inlet	■
Proposed 6 in. PVC Drain	—

Cambridge Townhomes		
SCALE: 1"=100'	2012 Road Improvement Program	DRAWN BY: RJR
DATE: 3-27-12		REVISED: _____
Village of ORLAND PARK		
Public Works Department		DRAWING NO. 3 OF 10

MALLARD LANDINGS QUANTITIES

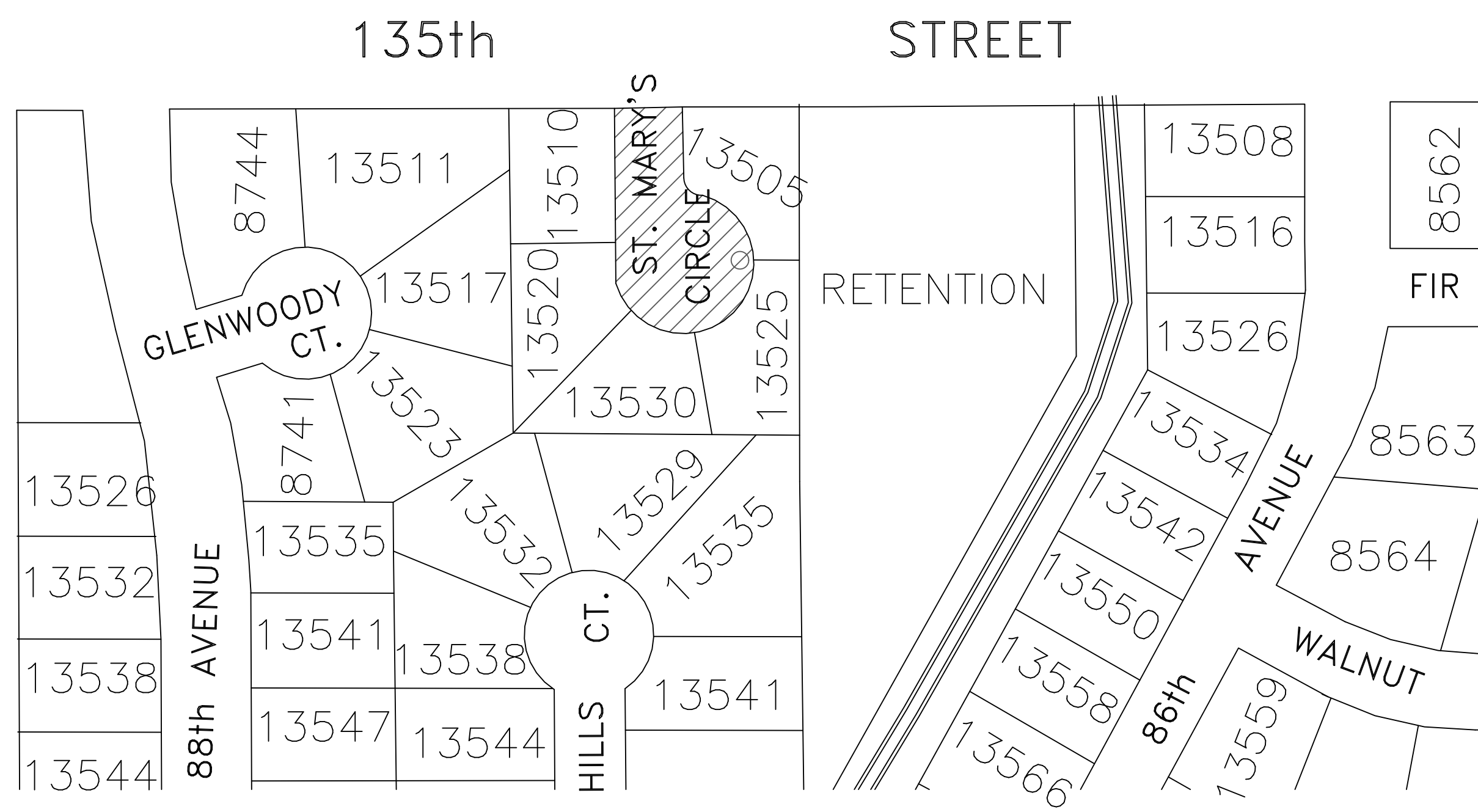
- 01. PORTLAND CEMENT CONCRETE SIDEWALK 5 INCH 3500 S.F.
- 02. SIDEWALK REMOVAL 3500 S.F.
- 03. DETECTABLE WARNINGS 184 S.F.
- 04. COMBINATION CONCRETE CURB & GUTTER, TYPE M-2.12 2100 L.F.
- 06. COMBINATION CURB & GUTTER REMOVAL 2100 L.F.
- 08. SHOTCRETE CURB REPAIR 480 L.F.
- 09. REMOVE & REPLACE 6" P.C.C. DRIVEWAY PAVEMENT 180 S.F.
- 10. REMOVE & REPLACE 2.5" ASPHALT DRIVEWAY PAVEMENT 40 S.Y.
- 11. PAVING BRICK DRIVEWAY REPAIR 30 S.Y.
- 12. STAMPED COLORED P.C.C. DRIVEWAY REPAIR, 6 INCH 30 S.F.
- 17. HOT-MIX ASPHALT SURFACE REMOVAL- BUTT JOINT 300 S.Y.
- 18. HOT-MIX ASPHALT SURFACE REMOVAL, 1-3/4" 6600 S.Y.
- 19. HOT-MIX ASPHALT SURFACE REMOVAL- EDGE MILL 5700 S.Y.
- 20. BITUMINOUS MATERIALS (PRIME COAT) 590 GAL.
- 22. CLASS D PATCHES- VARIOUS TYPES 550 TON
- 25. MIXTURE FOR CRACKS, JOINTS AND FLANGEWAYS 3 TON
- 27. TRENCH BACKFILL- CA-7 70 TON
- 28. TRENCH BACKFILL- CA-6 130 TON
- 29. POLYMERIZED LEVELING BINDER (MACHINE METHOD), N50 750 TON
- 30. HOT-MIX ASPHALT SURFACE COURSE, MIX "C" N50 1990 TON
- 31. STRIP REFLECTIVE CRACK CONTROL TREATMENT 140 S.F.
- 34. SODDING (& TOPSOIL) 500 S.F.
- 35. PIPE UNDERDRAIN, 6" PERFORATED PVC 510 L.F.
- 37. FRAME & LID TO BE ADJUSTED (STEEL RING) 2 EA.
- 38. MANHOLE/INLET TO BE ADJUSTED 10 EA.
- 39. RECONSTRUCT MANHOLE, BLOCK 1 EA.
- 40. RECONSTRUCT MANHOLE, CONE SECTION 1 EA.
- 42. RE-MORTAR STRUCTURE 25 EA.
- 44. THERMOPLASTIC PAVEMENT MARKING- LINE 740 S.F.



LEGEND

Existing Storm Sewer	---
Existing Storm Structure	○
Proposed 24 in. Inlet	■
Proposed 6 in. PVC Drain	—

Mallard Landings		
SCALE: 1"=100'	2012 Road Improvement Program	DRAWN BY: RJR
DATE: 3-27-12		REVISED: _____
Village of ORLAND PARK		
Public Works Department		DRAWING NO. 4 OF 10

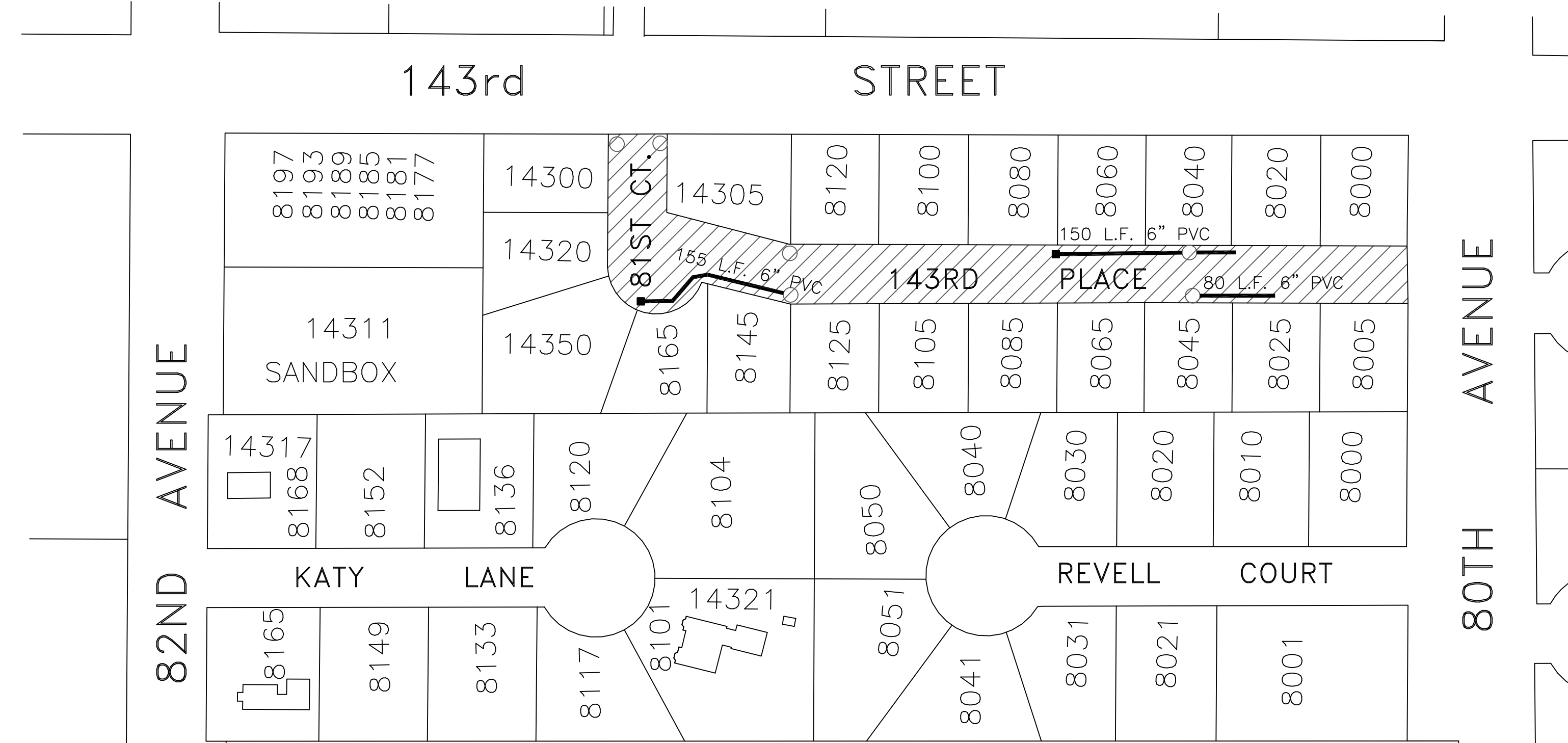
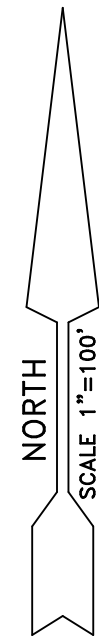


ST. MARY'S CIRCLE QUANTITIES

- | | |
|---|----------|
| 01. PORTLAND CEMENT CONCRETE SIDEWALK 5 INCH | 800 S.F. |
| 02. SIDEWALK REMOVAL | 800 S.F. |
| 03. DETECTABLE WARNINGS | 32 S.F. |
| 04. COMBINATION CONCRETE CURB & GUTTER, TYPE M-2.12 | 160 L.F. |
| 06. COMBINATION CURB & GUTTER REMOVAL | 160 L.F. |
| 08. SHOTCRETE CURB REPAIR | 20 L.F. |
| 09. REMOVE & REPLACE 6" P.C.C. DRIVEWAY PAVEMENT | 100 S.F. |
| 11. PAVING BRICK DRIVEWAY REPAIR | 10 S.Y. |
| 17. HOT-MIX ASPHALT SURFACE REMOVAL- BUTT JOINT | 80 S.Y. |
| 19. HOT-MIX ASPHALT SURFACE REMOVAL- EDGE MILL | 760 S.Y. |
| 20. BITUMINOUS MATERIALS (PRIME COAT) | 80 GAL. |
| 22. CLASS D PATCHES- VARIOUS TYPES | 30 TON |
| 28. TRENCH BACKFILL- CA-6 | 10 TON |
| 29. POLYMERIZED LEVELING BINDER (MACHINE METHOD), N50 | 35 TON |
| 30. HOT-MIX ASPHALT SURFACE COURSE, MIX "C" N50 | 90 TON |
| 34. SODDING (& TOPSOIL) | 25 S.Y. |
| 42. RE-MORTAR STRUCTURE | 1 EA. |
| 44. THERMOPLASTIC PAVEMENT MARKING- LINE | 28 S.F. |

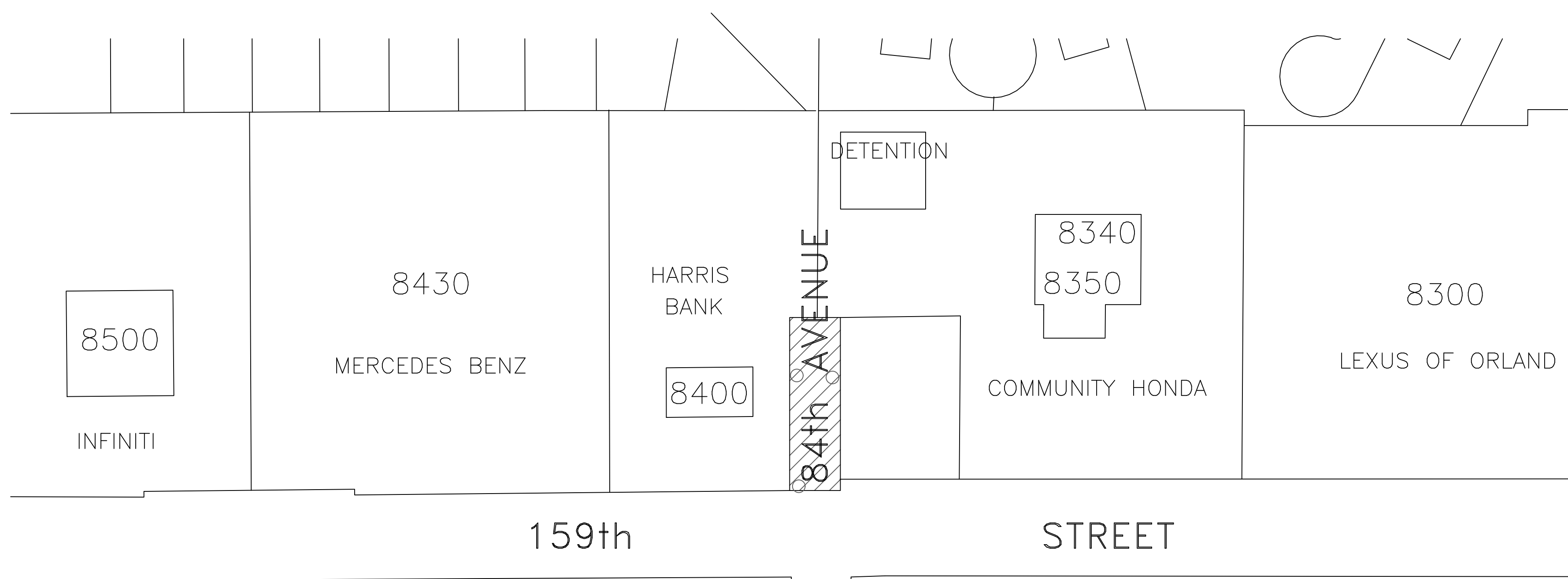
84TH AVENUE QUANTITIES

- | | |
|---|-----------|
| 01. PORTLAND CEMENT CONCRETE SIDEWALK 5 INCH | 100 S.F. |
| 02. SIDEWALK REMOVAL | 100 S.F. |
| 03. DETECTABLE WARNINGS | 16 S.F. |
| 04. COMBINATION CONCRETE CURB & GUTTER, TYPE M-2.12 | 100 L.F. |
| 06. COMBINATION CURB & GUTTER REMOVAL | 100 L.F. |
| 08. SHOTCRETE CURB REPAIR | 20 L.F. |
| 17. HOT-MIX ASPHALT SURFACE REMOVAL- BUTT JOINT | 200 S.Y. |
| 19. HOT-MIX ASPHALT SURFACE REMOVAL- EDGE MILL | 300 S.Y. |
| 20. BITUMINOUS MATERIALS (PRIME COAT) | 100 GAL. |
| 22. CLASS D PATCHES- VARIOUS TYPES | 40 TON |
| 28. TRENCH BACKFILL- CA-6 | 8 TON |
| 29. POLYMERIZED LEVELING BINDER (MACHINE METHOD), N50 | 40 TON |
| 30. HOT-MIX ASPHALT SURFACE COURSE, MIX "C" N50 | 120 TON |
| 34. SODDING (& TOPSOIL) | 20 S.Y. |
| 38. MANHOLE/INLET TO BE ADJUSTED | 1 EA. |
| 42. RE-MORTAR STRUCTURE | 3 EA. |
| 43. DETECTOR LOOP, TYPE 1 | 200 L.F. |
| 44. THERMOPLASTIC PAVEMENT MARKING- LINE | 150 S.F. |
| 45. THERMOPLASTIC PAVEMENT MARKING- LETTERS & SYMBOLS | 36.4 S.F. |



143RD PLACE QUANTITIES

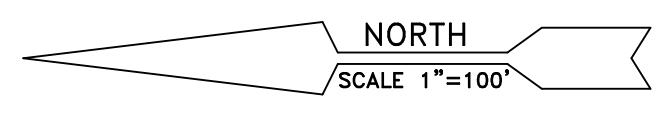
- | | |
|---|-----------|
| 01. PORTLAND CEMENT CONCRETE SIDEWALK 5 INCH | 640 S.F. |
| 02. SIDEWALK REMOVAL | 640 S.F. |
| 03. DETECTABLE WARNINGS | 64 S.F. |
| 04. COMBINATION CONCRETE CURB & GUTTER, TYPE M-2.12 | 380 L.F. |
| 06. COMBINATION CURB & GUTTER REMOVAL | 380 L.F. |
| 08. SHOTCRETE CURB REPAIR | 80 L.F. |
| 09. REMOVE & REPLACE 6" P.C.C. DRIVEWAY PAVEMENT | 80 S.F. |
| 10. REMOVE & REPLACE 2.5" ASPHALT DRIVEWAY PAVEMENT | 20 S.Y. |
| 11. PAVING BRICK DRIVEWAY REPAIR | 12 S.Y. |
| 17. HOT-MIX ASPHALT SURFACE REMOVAL- BUTT JOINT | 160 S.Y. |
| 19. HOT-MIX ASPHALT SURFACE REMOVAL- EDGE MILL | 1500 S.Y. |
| 20. BITUMINOUS MATERIALS (PRIME COAT) | 300 GAL. |
| 22. CLASS D PATCHES- VARIOUS TYPES | 110 TON |
| 27. TRENCH BACKFILL- CA-7 | 50 TON |
| 28. TRENCH BACKFILL- CA-6 | 35 TON |
| 29. POLYMERIZED LEVELING BINDER (MACHINE METHOD), N50 | 130 TON |
| 30. HOT-MIX ASPHALT SURFACE COURSE, MIX "C" N50 | 330 TON |
| 31. STRIP REFLECTIVE CRACK CONTROL TREATMENT | 40 S.F. |
| 34. SODDING (& TOPSOIL) | 85 S.Y. |
| 35. PIPE UNDERDRAIN, 6" PERFORATED PVC | 385 L.F. |
| 36. INLET, TYPE A, FRAME & LID | 2 EA. |
| 37. FRAME & LID TO BE ADJUSTED (STEEL RING) | 1 EA. |
| 38. MANHOLE/INLET TO BE ADJUSTED | 3 EA. |
| 42. RE-MORTAR STRUCTURE | 3 EA. |
| 44. THERMOPLASTIC PAVEMENT MARKING- LINE | 145 S.F. |



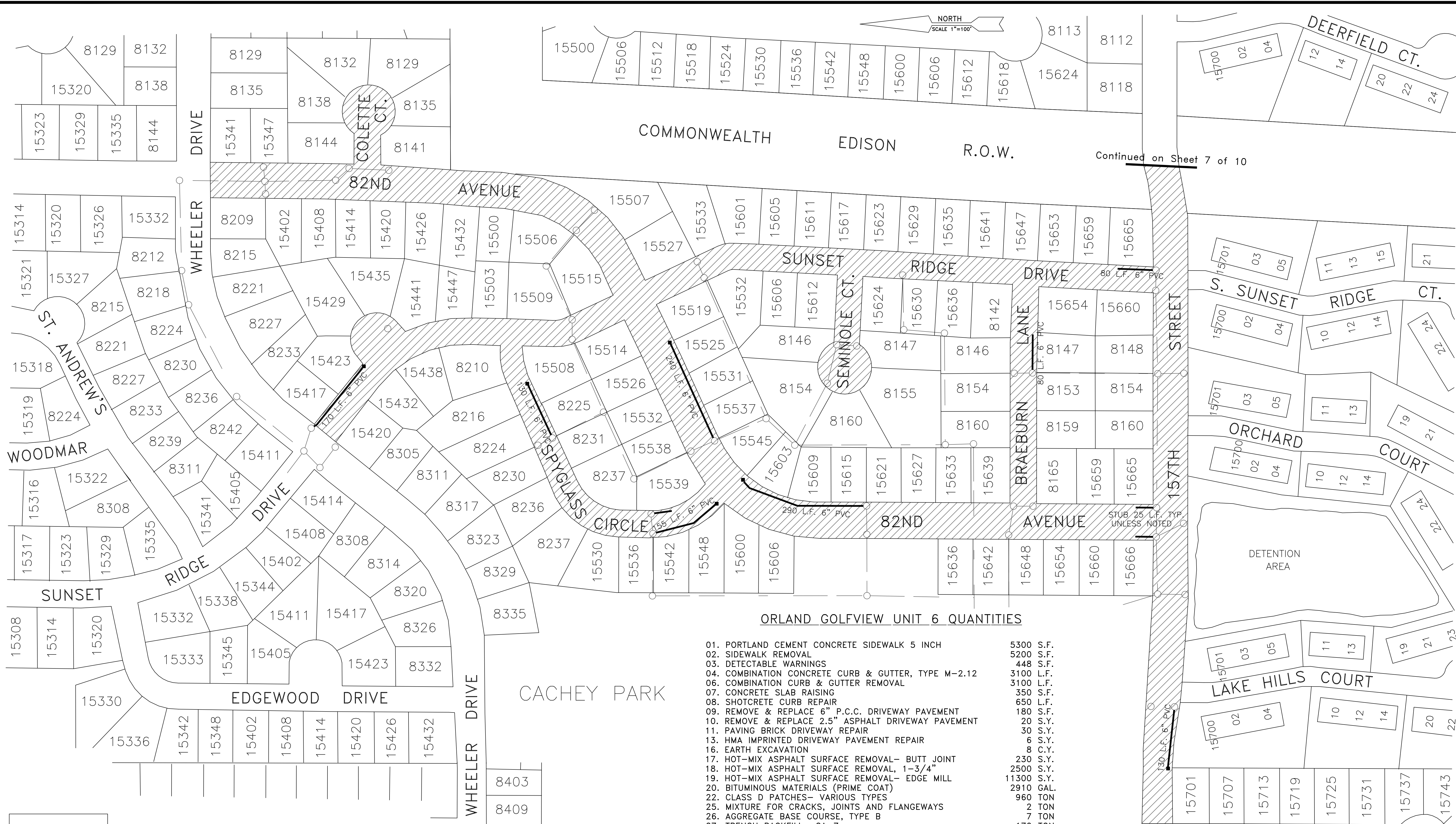
LEGEND

- Existing Storm Sewer
- Existing Storm Structure
- Proposed 24 in. Inlet
- Proposed 6 in. PVC Drain

143rd Pl., St. Mary's, 84th Ave.		
SCALE: 1"=100'	2012 Road Improvement Program	DRAWN BY: RJR
DATE: 3-27-12		REVISED: _____
Village of ORLAND PARK		
Public Works Department		DRAWING NO. 5 OF 10



Continued on Sheet 7 of 10



ORLAND GOLFVIEW UNIT 6 QUANTITIES

01. PORTLAND CEMENT CONCRETE SIDEWALK 5 INCH	5300 S.F.
02. SIDEWALK REMOVAL	5200 S.F.
03. DETECTABLE WARNINGS	448 S.F.
04. COMBINATION CONCRETE CURB & GUTTER, TYPE M-2.12	3100 L.F.
06. COMBINATION CURB & GUTTER REMOVAL	3100 L.F.
07. CONCRETE SLAB RAISING	350 S.F.
08. SHOTCRETE CURB REPAIR	650 L.F.
09. REMOVE & REPLACE 6" P.C.C. DRIVEWAY PAVEMENT	180 S.F.
10. REMOVE & REPLACE 2.5" ASPHALT DRIVEWAY PAVEMENT	20 S.Y.
11. PAVING BRICK DRIVEWAY REPAIR	30 S.Y.
13. HMA IMPRINTED DRIVEWAY PAVEMENT REPAIR	6 S.Y.
16. EARTH EXCAVATION	8 C.Y.
17. HOT-MIX ASPHALT SURFACE REMOVAL- BUTT JOINT	230 S.Y.
18. HOT-MIX ASPHALT SURFACE REMOVAL, 1-3/4"	2500 S.Y.
19. HOT-MIX ASPHALT SURFACE REMOVAL- EDGE MILL	11300 S.Y.
20. BITUMINOUS MATERIALS (PRIME COAT)	2910 GAL.
22. CLASS D PATCHES- VARIOUS TYPES	960 TON
25. MIXTURE FOR CRACKS, JOINTS AND FLANGEWAYS	2 TON
26. AGGREGATE BASE COURSE, TYPE B	7 TON
27. TRENCH BACKFILL- CA-7	170 TON
28. TRENCH BACKFILL- CA-6	300 TON
29. POLYMERIZED LEVELING BINDER (MACHINE METHOD), N50	1250 TON
30. HOT-MIX ASPHALT SURFACE COURSE, MIX "C" N50	3280 TON
31. STRIP REFLECTIVE CRACK CONTROL TREATMENT	140 S.F.
34. SODDING (& TOPSOIL)	700 S.Y.
35. PIPE UNDERDRAIN, 6" PERFORATED PVC	1220 L.F.
36. INLET, TYPE A, FRAME & LID	5 EA.
37. FRAME & LID TO BE ADJUSTED (STEEL RING)	5 EA.
38. MANHOLE/INLET TO BE ADJUSTED	17 EA.
39. RECONSTRUCT MANHOLE, BLOCK	1 EA.
41. RECONSTRUCT MANHOLE, FLAT SLAB TOP	1 EA.
42. RE-MORTAR STRUCTURE	26 EA.
44. THERMOPLASTIC PAVEMENT MARKING- LINE	2090 S.F.

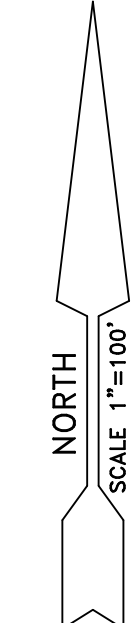
LEGEND

- Existing Storm Sewer
- Existing Storm Structure
- Proposed 24 in. Inlet
- Proposed 6 in. PVC Drain

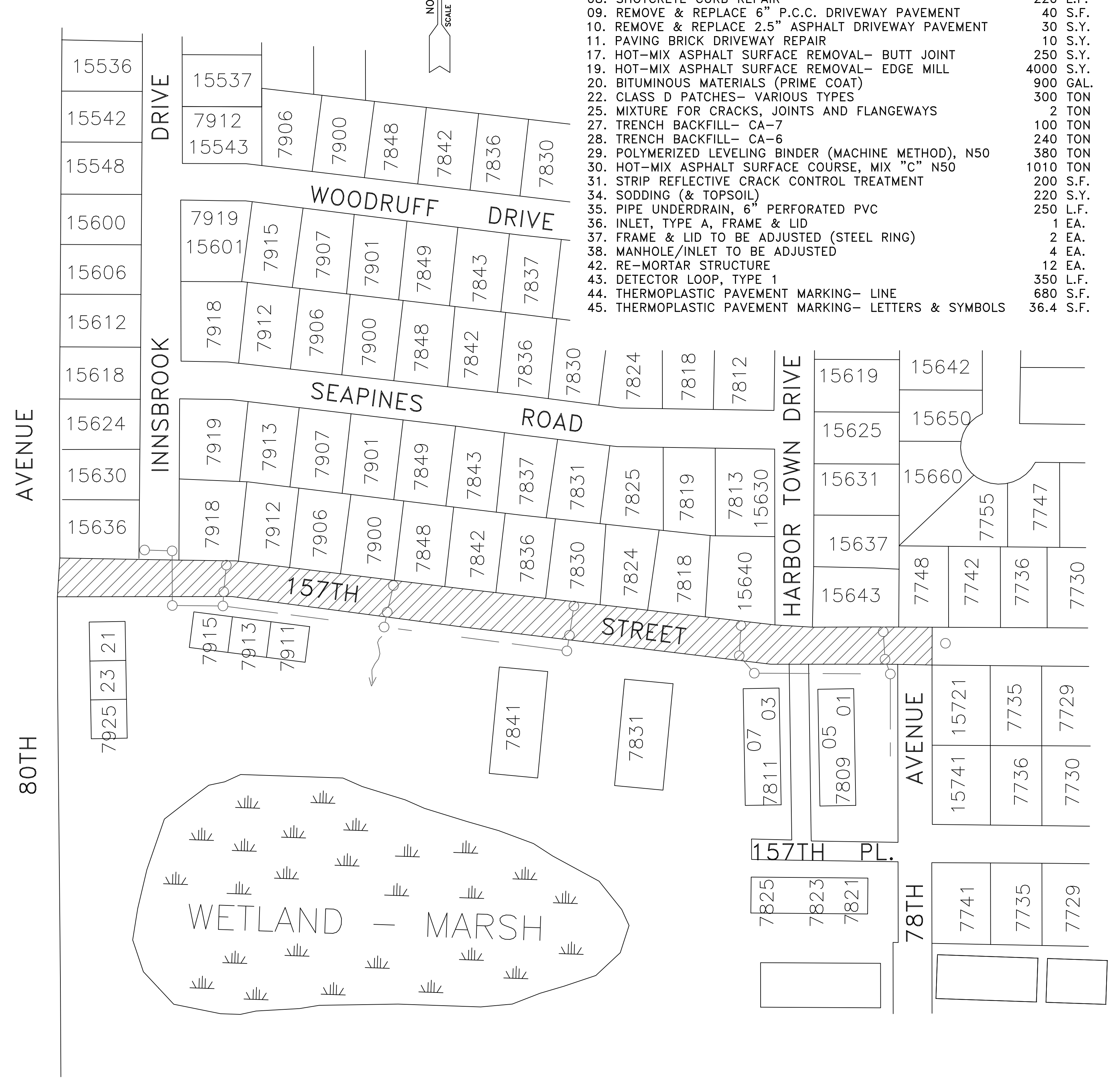
Orland Golfview Unit 6		
SCALE: 1"=100'	2012 Road Improvement Program	DRAWN BY: RJR
DATE: 3-27-12	Village of ORLAND PARK	REVISED: _____
Public Works Department		DRAWING NO. 6 OF 10

157TH STREET QUANTITIES

01. PORTLAND CEMENT CONCRETE SIDEWALK 5 INCH	1660 S.F.
02. SIDEWALK REMOVAL	1760 S.F.
03. DETECTABLE WARNINGS	224 S.F.
04. COMBINATION CONCRETE CURB & GUTTER, TYPE M-2.12	970 L.F.
05. COMBINATION CONCRETE CURB & GUTTER, TYPE B-6.12	20 L.F.
06. COMBINATION CURB & GUTTER REMOVAL	990 L.F.
07. CONCRETE SLAB RAISING	250 S.F.
08. SHOTCRETE CURB REPAIR	220 L.F.
09. REMOVE & REPLACE 6" P.C.C. DRIVEWAY PAVEMENT	40 S.F.
10. REMOVE & REPLACE 2.5" ASPHALT DRIVEWAY PAVEMENT	30 S.Y.
11. PAVING BRICK DRIVEWAY REPAIR	10 S.Y.
17. HOT-MIX ASPHALT SURFACE REMOVAL- BUTT JOINT	250 S.Y.
19. HOT-MIX ASPHALT SURFACE REMOVAL- EDGE MILL	4000 S.Y.
20. BITUMINOUS MATERIALS (PRIME COAT)	900 GAL.
22. CLASS D PATCHES- VARIOUS TYPES	300 TON
25. MIXTURE FOR CRACKS, JOINTS AND FLANGEWAYS	2 TON
27. TRENCH BACKFILL- CA-7	100 TON
28. TRENCH BACKFILL- CA-6	240 TON
29. POLYMERIZED LEVELING BINDER (MACHINE METHOD), N50	380 TON
30. HOT-MIX ASPHALT SURFACE COURSE, MIX "C" N50	1010 TON
31. STRIP REFLECTIVE CRACK CONTROL TREATMENT	200 S.F.
34. SODDING (& TOPSOIL)	220 S.Y.
35. PIPE UNDERDRAIN, 6" PERFORATED PVC	250 L.F.
36. INLET, TYPE A, FRAME & LID	1 EA.
37. FRAME & LID TO BE ADJUSTED (STEEL RING)	2 EA.
38. MANHOLE/INLET TO BE ADJUSTED	4 EA.
42. RE-MORTAR STRUCTURE	12 EA.
43. DETECTOR LOOP, TYPE 1	350 L.F.
44. THERMOPLASTIC PAVEMENT MARKING- LINE	680 S.F.
45. THERMOPLASTIC PAVEMENT MARKING- LETTERS & SYMBOLS	36.4 S.F.



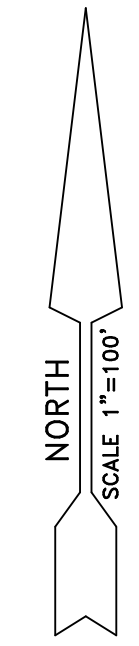
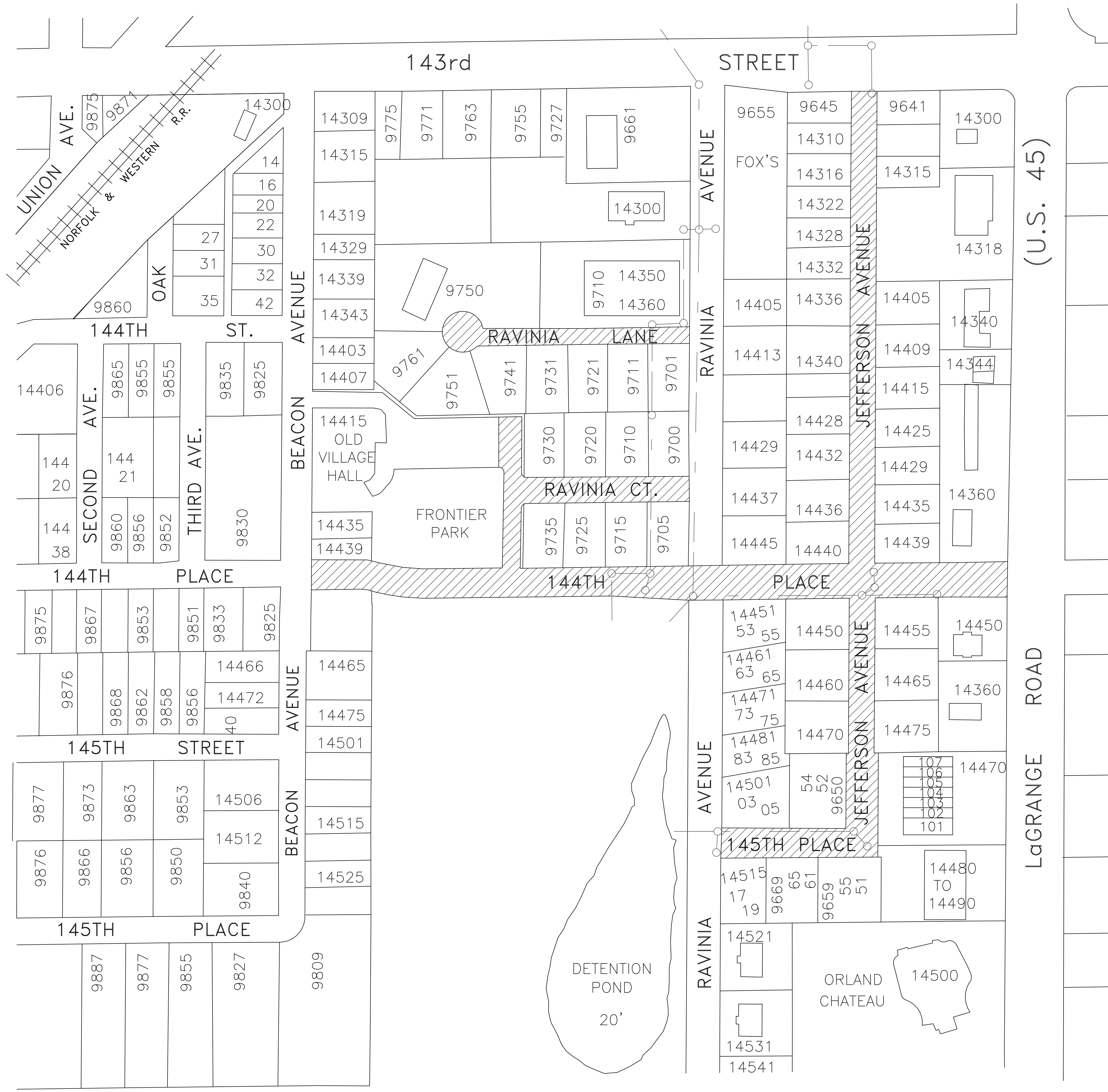
Continued on Sheet 6 of 10



LEGEND

- Existing Storm Sewer
- Existing Storm Structure
- Proposed 24 in. Inlet
- Proposed 6 in. PVC Drain

157th Street		
SCALE: 1"=100'	2012 Road Improvement Program	DRAWN BY: RJR
DATE: 3-27-12		REVISED: _____
Village of ORLAND PARK		
Public Works Department		DRAWING NO. 7 OF 10

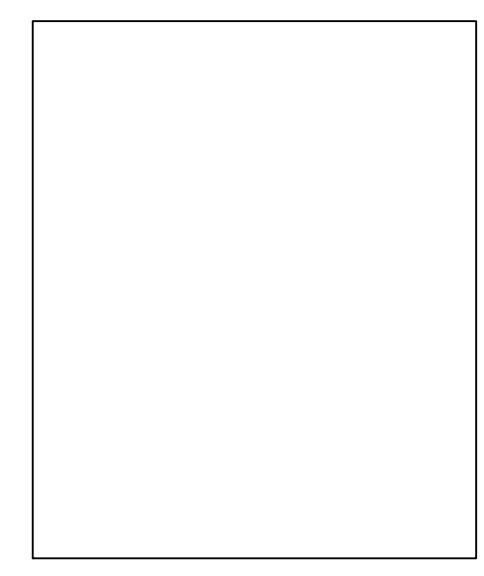


144TH PLACE & JEFFERSON QUANTITIES

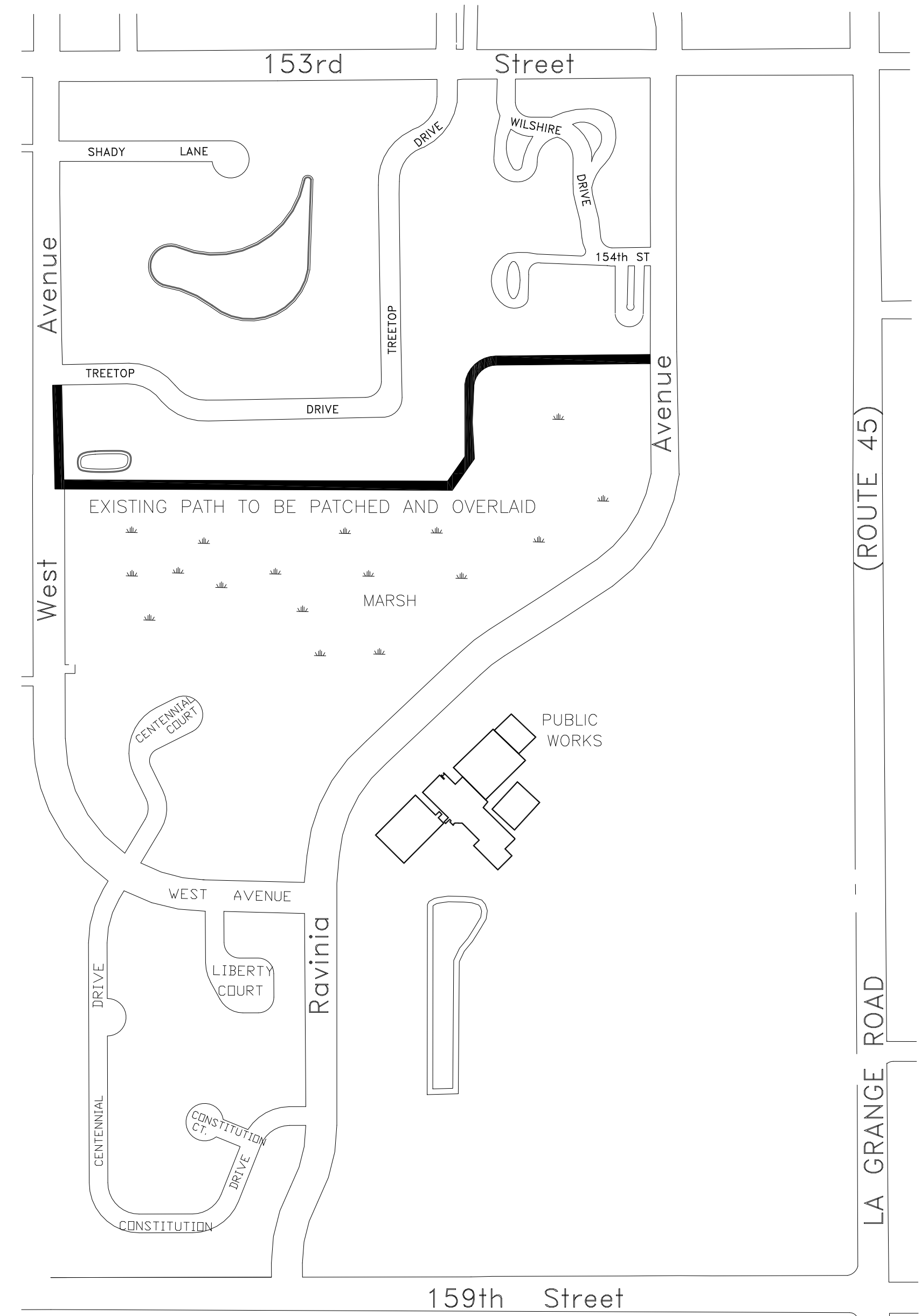
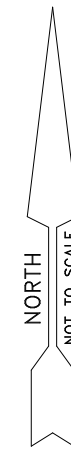
- | | |
|---|-----------|
| 01. PORTLAND CEMENT CONCRETE SIDEWALK 5 INCH | 1500 S.F. |
| 02. SIDEWALK REMOVAL | 1500 S.F. |
| 03. DETECTABLE WARNINGS | 64 S.F. |
| 04. COMBINATION CONCRETE CURB & GUTTER, TYPE M-2.12 | 1400 L.F. |
| 05. COMBINATION CONCRETE CURB & GUTTER, TYPE B-6.12 | 250 L.F. |
| 06. COMBINATION CURB & GUTTER REMOVAL | 1650 L.F. |
| 07. CONCRETE SLAB RAISING | 350 S.F. |
| 08. SHOTCRETE CURB REPAIR | 350 L.F. |
| 09. REMOVE & REPLACE 6" P.C.C. DRIVEWAY PAVEMENT | 100 S.F. |
| 10. REMOVE & REPLACE 2.5" ASPHALT DRIVEWAY PAVEMENT | 20 S.Y. |
| 17. HOT-MIX ASPHALT SURFACE REMOVAL- BUTT JOINT | 120 S.Y. |
| 18. HOT-MIX ASPHALT SURFACE REMOVAL, 1-3/4" | 5200 S.Y. |
| 19. HOT-MIX ASPHALT SURFACE REMOVAL- EDGE MILL | 3600 S.Y. |
| 20. BITUMINOUS MATERIALS (PRIME COAT) | 1300 GAL. |
| 22. CLASS D PATCHES- VARIOUS TYPES | 390 TON |
| 25. MIXTURE FOR CRACKS, JOINTS AND FLANGEWAYS | 2 TON |
| 28. TRENCH BACKFILL- CA-6 | 80 TON |
| 29. POLYMERIZED LEVELING BINDER (MACHINE METHOD), N50 | 560 TON |
| 30. HOT-MIX ASPHALT SURFACE COURSE, MIX "C" N50 | 1490 TON |
| 31. STRIP REFLECTIVE CRACK CONTROL TREATMENT | 150 S.F. |
| 34. SODDING (& TOPSOIL) | 310 S.Y. |
| 37. FRAME & LID TO BE ADJUSTED (STEEL RING) | 1 EA. |
| 38. MANHOLE/INLET TO BE ADJUSTED | 7 EA. |
| 39. RECONSTRUCT MANHOLE, BLOCK | 1 EA. |
| 42. RE-MORTAR STRUCTURE | 10 EA. |
| 44. THERMOPLASTIC PAVEMENT MARKING- LINE | 1080 S.F. |
| 45. THERMOPLASTIC PAVEMENT MARKING- LETTERS & SYMBOLS | 36.4 S.F. |

LEGEND

- Existing Storm Sewer
- Existing Storm Structure
- Proposed 24 in. Inlet
- Proposed 6 in. PVC Drain



144th Place & Jefferson		
SCALE: 1"=100'	2012 Road Improvement Program	DRAWN BY: RJR
DATE: 3-27-12		REVISED: _____
Village of ORLAND PARK		
Public Works Department		DRAWING NO. 8 OF 10



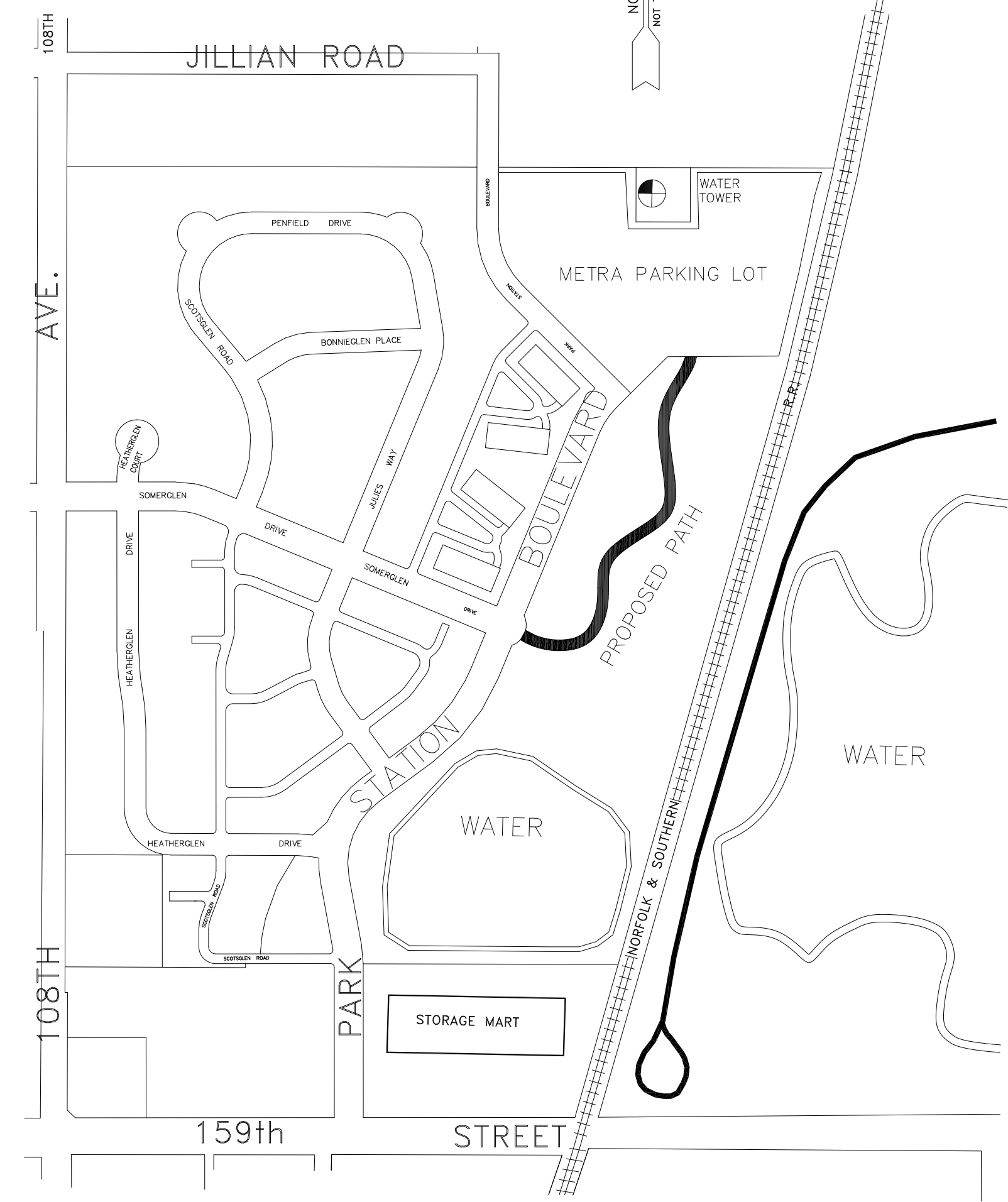
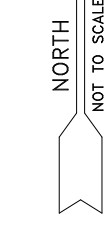
RAVINIA AVENUE PATH QUANTITIES

15. HMA SURFACE COURSE- PATH, MIX "C", N50	275 TON
20. BITUMINOUS MATERIALS (PRIME COAT)	370 GAL.
24. CLASS D PATCHES- VARIOUS TYPES- PATH	70 TON
32. SEEDING, CLASS 1 (& TOPSOIL)	340 S.Y.
33. EROSION CONTROL BLANKET	340 S.Y.
46. EPOXY PAVEMENT MARKING- LINE 4"	2900 L.F.

Ravinia Avenue Path Note:

Existing asphalt path to be cleaned, patched and overlaid:

1. Class D patching
2. Pave 10' wide- 1 1/2" Hot Mix Asphalt Surface Course, Mix "C", N50.
3. Restore (seed & blanket) approximately 2' wide along edge of path as needed to transition to existing shoulder.



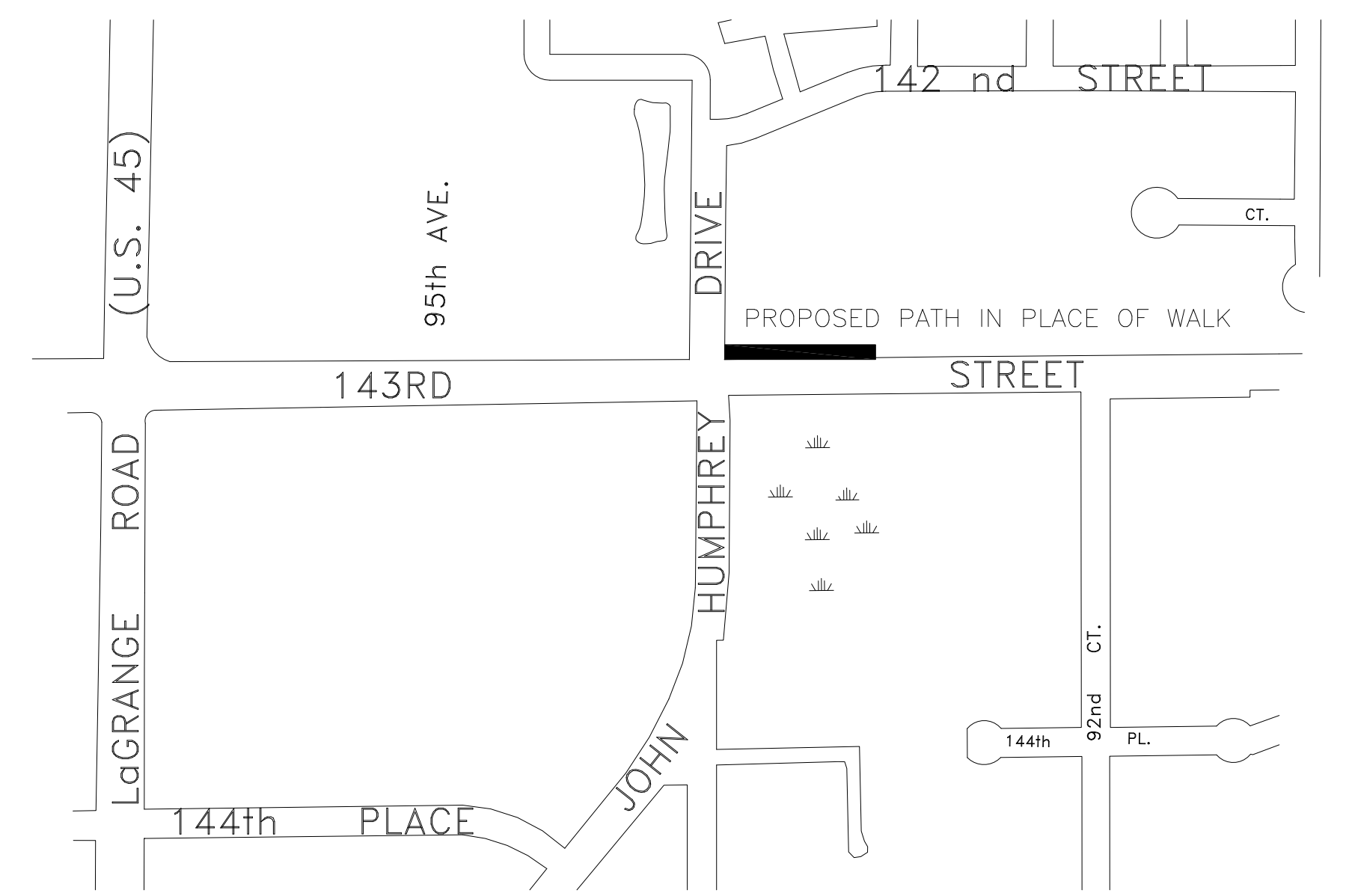
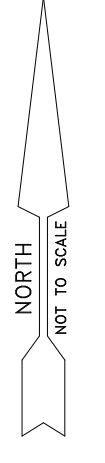
PARK STATION BOULEVARD QUANTITIES

14. HMA BINDER COURSE- PATH, IL-19.0, N50	120 TON
15. HMA SURFACE COURSE- PATH, MIX "C", N50	120 TON
16. EARTH EXCAVATION	540 C.Y.
21. AGGREGATE (PRIME COAT)	350 GAL.
26. AGGREGATE BASE COURSE, TYPE B	660 TON
32. SEEDING, CLASS 1 (& TOPSOIL)	550 S.Y.
33. EROSION CONTROL BLANKET	550 S.Y.
46. EPOXY PAVEMENT MARKING- LINE 4"	1200 L.F.

Park Station Boulevard Path Note:

Proposed asphalt path to be constructed:

1. Excavate approximately 12' wide by 12" deep.
2. Place and compact 9" Stone Base
3. Pave 10' wide- 1 1/2" Hot Mix Asphalt Binder Course, IL-19.0, N50
4. Pave 10' wide- 1 1/2" Hot Mix Asphalt Surface Course, Mix "C", N50
5. Restore approximately 2' wide along edge of new path with Seeding and Erosion Control Blanket



143RD STREET PATH QUANTITIES

14. HMA BINDER COURSE- PATH, IL-19.0, N50	22 TON
15. HMA SURFACE COURSE- PATH, MIX "C", N50	22 TON
21. AGGREGATE (PRIME COAT)	60 GAL.
32. SEEDING, CLASS 1 (& TOPSOIL)	120 S.Y.
33. EROSION CONTROL BLANKET	120 S.Y.
47. TRAFFIC CONTROL AND PROTECTION, 143RD STREET	1 L.S.

143rd Street Path Note:

Proposed asphalt path to be constructed:

Village Crews

1. Excavation and Sidewalk removal
2. Place and compact Stone Base

Contractor

3. Pave 6' wide 1 1/2" Hot Mix Asphalt Binder Course, IL-19.0, N50
4. Pave 6' wide 1 1/2" Hot Mix Asphalt Surface Course, Mix "C", N50
5. Restore approximately 2' wide along edge of new path with Seeding and Erosion Control Blanket

Asphalt Paths			
SCALE: NONE	2012 Road Improvement Program	DRAWN BY: RJR	
DATE: 3-27-12		REVISED: RJR	
Village of ORLAND PARK			
Public Works Department			DRAWING NO. 9 OF 10

GENERAL NOTES

01. ALL CONSTRUCTION SHALL CONFORM TO THE LATEST EDITIONS OF THE ILLINOIS DEPARTMENT OF TRANSPORTATION "STANDARD SPECIFICATIONS FOR ROAD AND BRIDGE CONSTRUCTION", THE "SUPPLEMENTAL SPECIFICATIONS AND RECURRING SPECIAL PROVISIONS", THE "ILLINOIS MANUAL ON UNIFORM TRAFFIC CONTROL DEVICES FOR STREETS AND HIGHWAYS", AND THE "STANDARD SPECIFICATIONS FOR SEWER AND WATER CONSTRUCTION IN ILLINOIS."

02. THE CONTRACTOR SHALL NOTIFY ALL UTILITY COMPANIES FOR FIELD LOCATIONS OF THEIR FACILITIES PRIOR TO CONSTRUCTION. THE CONTRACTOR SHALL BE RESPONSIBLE FOR THE MAINTENANCE AND PRESERVATION OF THESE FACILITIES.

03. CONSTRUCTION STAKING WILL BE PROVIDED BY THE VILLAGE.

04. ALL NEW MANHOLES, CATCH BASINS, INLETS AND VALVE VAULTS SHALL INCLUDE A CAST IRON FRAME AND LID OR GRATE. STORM STRUCTURES WHICH FALL IN THE CURBLINE AND REQUIRE AN OPEN GRATE SHALL USE EAST JORDAN IRON WORKS FRAME 7525.

05. ALL JOB SITES SHALL BE CLEAN AND SWEEPED AFTER FINAL PAVING. THE COST OF CLEANING AND SWEEPING SHALL BE INCIDENTAL TO THE COST OF THE PROJECT.

06. EXCAVATION AND REMOVAL ITEMS BEING DISPOSED OF AT AN UNCONTAMINATED SOIL FILL OPERATION OR CLEAN CONSTRUCTION DEMOLITION DEBRIS FILL SITE SHALL MEET THE REQUIREMENTS OF PUBLIC ACT 96-1416. ALL COSTS ASSOCIATED WITH MEETING THESE REQUIREMENTS SHALL BE INCLUDED IN THE UNIT PRICE OF THE ASSOCIATED EXCAVATION OR REMOVAL ITEMS. THESE COSTS SHALL INCLUDE BUT ARE NOT LIMITED TO ALL REQUIRED TESTING, LAB ANALYSIS, CERTIFICATION BY A LICENSED PROFESSIONAL ENGINEER, AND STATE AND LOCAL TIPPING FEES.

07. ALL WORK SHALL BE COMPLETED IN EACH PROJECT AREA (IN PLAN ORDER) BEFORE STARTING WORK IN ANOTHER AREA, UNLESS APPROVED BY THE ENGINEER.

08. THE VILLAGE FULLY EXPECTS THE CONTRACTOR TO COMPLETE ALL WORK (EXCEPT SODDING & TOPSOIL) BY OCTOBER 15TH. THE SUCCESSFUL CONTRACTOR SHALL SUBMIT A SCHEDULE PRIOR TO STARTING ANY WORK AND SUBMIT WEEKLY PROGRESS REPORTS TO BE USED FOR UPDATING THE VILLAGE'S WEBSITE AND SHOW THAT WORK IS PROGRESSING ON SCHEDULE.

09. IT IS THE CONTRACTOR'S RESPONSIBILITY TO OBTAIN ANY AND ALL NECESSARY STATE OR COUNTY PERMITS.

10. NO CONSTRUCTION WORK SHALL BE DONE DURING STORMY, FREEZING OR INCLEMENT WEATHER, EXCEPT THAT WHICH CAN BE DONE IN A MANNER TO SECURE FIRST CLASS CONSTRUCTION THROUGHOUT, AND THEN ONLY SUBJECT TO PRIOR WRITTEN PERMISSION OF THE ENGINEER.

11. UNLESS OTHERWISE NOTED, ANY STREET SIGNS REMOVED AND/OR DAMAGED DURING, OR AS A RESULT OF THE CONSTRUCTION SHALL BE REPLACED AT THE ORIGINAL LOCATION, WITH THE ORIGINAL UNDAMAGED SIGN OR AN APPROVED EQUAL AT NO COST TO THE VILLAGE.

12. THE UNIT PRICE FOR ALL SIDEWALK, CURB, AND DRIVEWAY PAY ITEMS SHALL INCLUDE SAW-CUTTING, RINSING WITH WATER AFTER SAW-CUTTING, REMOVAL OF EXISTING TO THE PROPOSED DEPTH, AND REPLACEMENT.

13. SIDEWALK REMOVAL (ITEM #2) SHALL BE REMOVED BY SUCH METHODS THAT WILL NOT DAMAGE THE PARKWAY AREA BETWEEN THE CURB AND THE SIDEWALK. UNNECESSARY DAMAGE TO TREES, SOD OR DRIVEWAYS IN THIS AREA SHALL BE REPAIRED OR REPLACED AT NO COST TO THE VILLAGE.

14. IN ORDER TO MAINTAIN ACCESS TO ALL PUBLIC ROADS AND MULTI-FAMILY RESIDENTIAL AREAS, SOME SECTIONS OF CURB OR SIDEWALK TO BE REMOVED MAY REQUIRE TWO SEPERATE MOBILIZATIONS. ANY ADDITIONAL COST TO COMPLETE THIS WORK IN TWO PHASES SHALL BE INCIDENTAL TO THE COST OF THE WORK BEING PERFORMED.

15. COMBINATION CURB & GUTTER REMOVAL (#6) SHALL INCLUDE SAW-CUTTING AND EXCAVATING APPROXIMATELY ONE FOOT OF ASPHALT PAVEMENT TO BE REMOVED ADJACENT TO THE CURB IN ORDER TO ALLOW FOR PROPER FORMING. AFTER CONCRETE PLACEMENT, THIS AREA SHALL BE BACKFILLED WITH COMPACTED CA-6 AGGREGATE, PAVED WITH 3 IN. BINDER COURSE, AND LEFT 1-1/2" BELOW THE FRONT OF THE CURB IN ORDER TO ALLOW FOR SURFACE COURSE.

16. THE CONTRACTOR WILL BE RESPONSIBLE FOR DELIVERING A COPY OF ANY AND ALL MATERIAL DELIVERY TICKETS TO THE ENGINEER AT THE END OF EACH WORK DAY.

17. BITUMINOUS MATERIALS (PRIME COAT) SHALL BE SS-1 APPLIED AT THE RATE OF 0.10 GALLONS/S.Y. ON THE DAY OF PAVING.

18. IT IS THE RESPONSIBILITY OF THE CONTRACTOR TO LOCATE AND PRESERVE ALL LAWN/LANDSCAPE SPRINKLER SYSTEM COMPONENTS. ANY DAMAGE SHALL BE REPAIRED OR REPLACED WITHIN SEVEN CALENDAR DAYS AT NO COST TO THE VILLAGE.

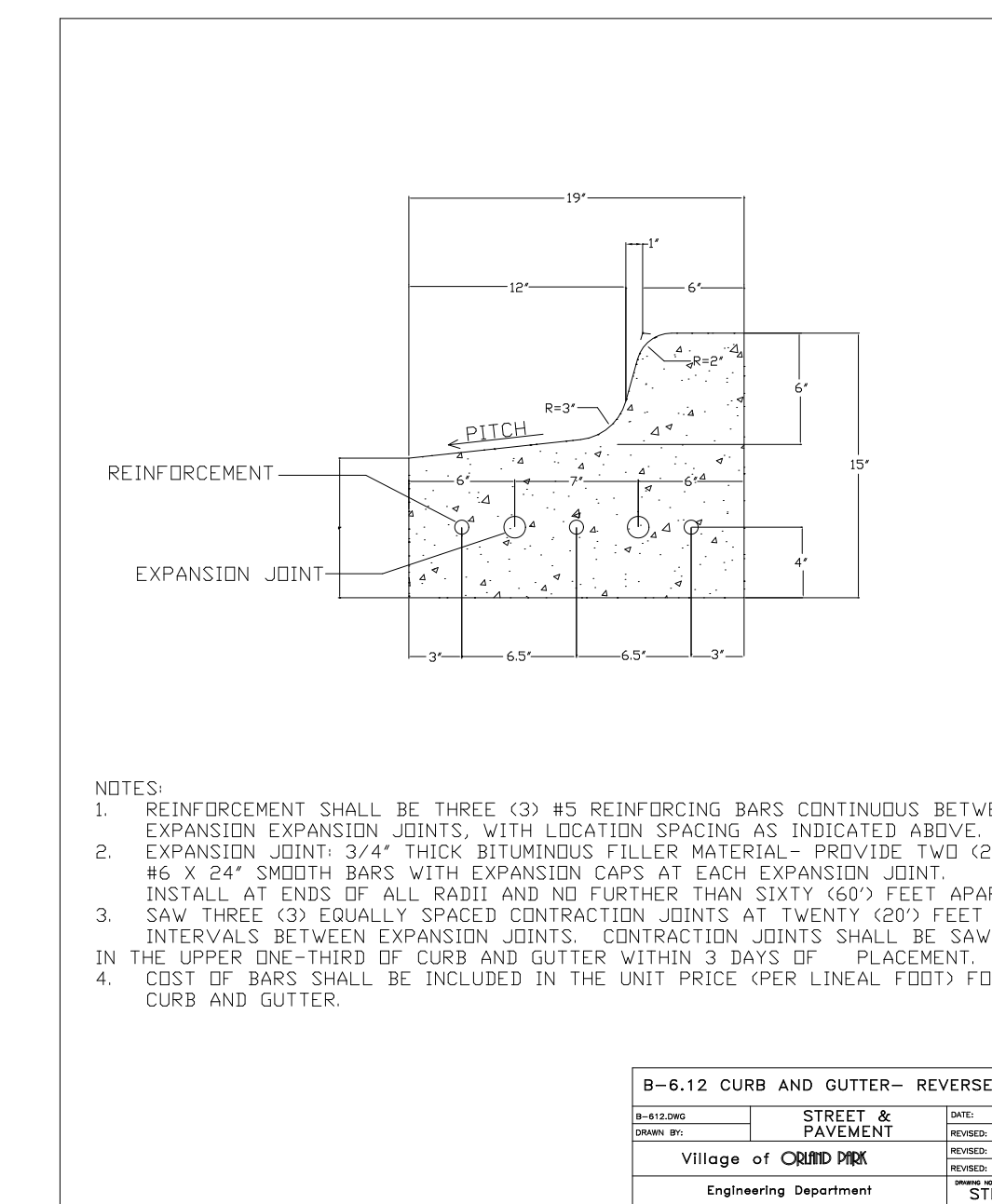
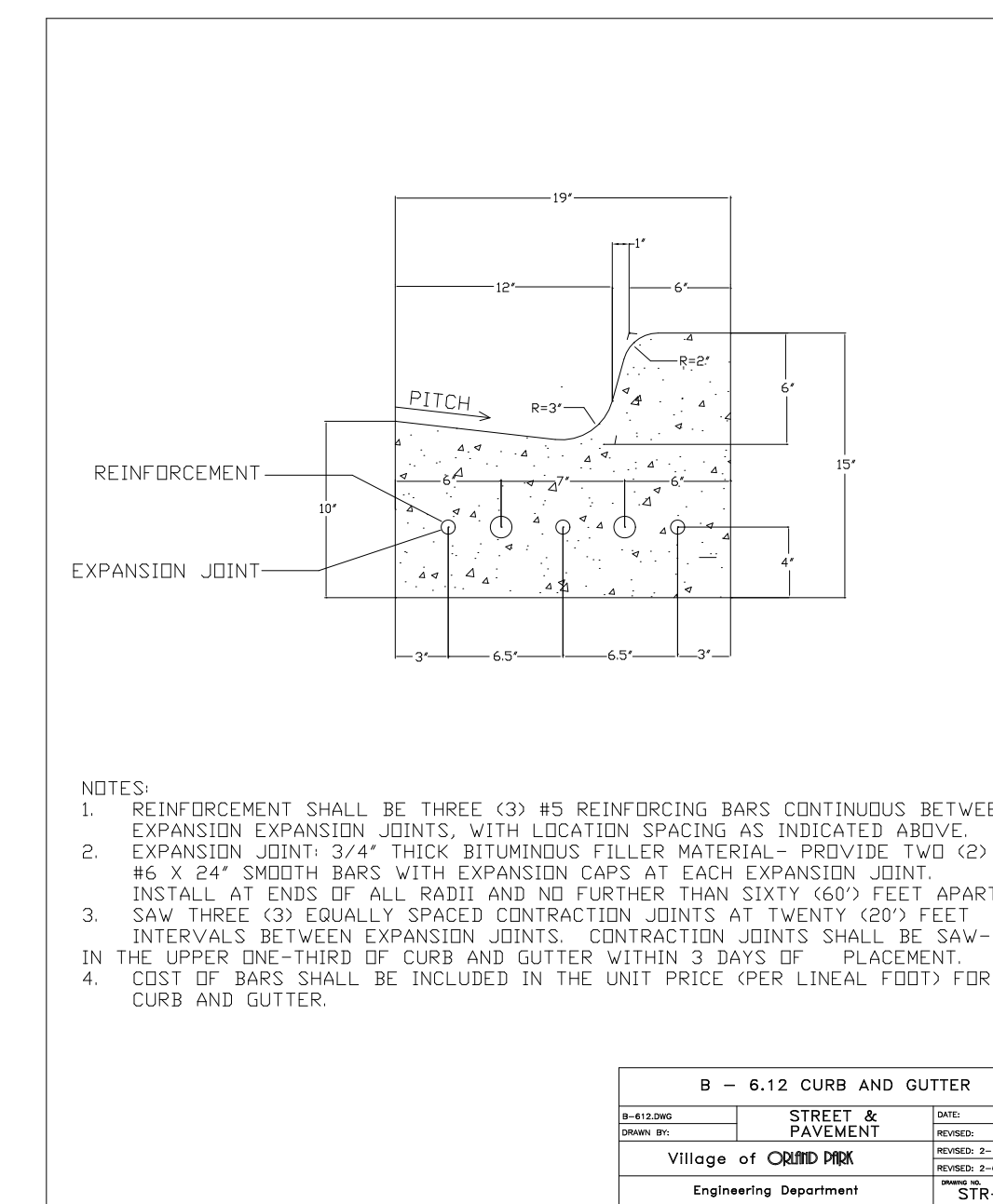
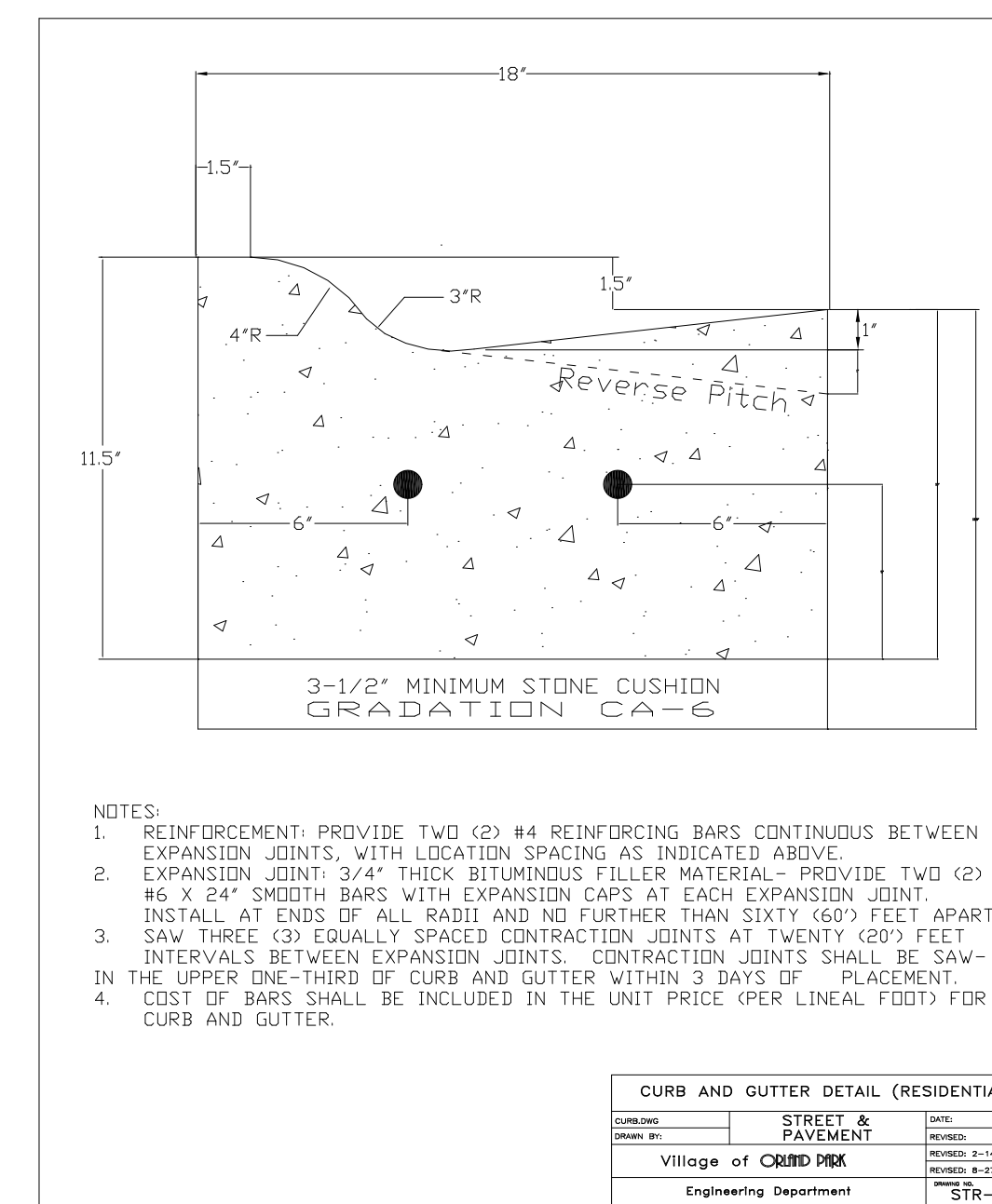
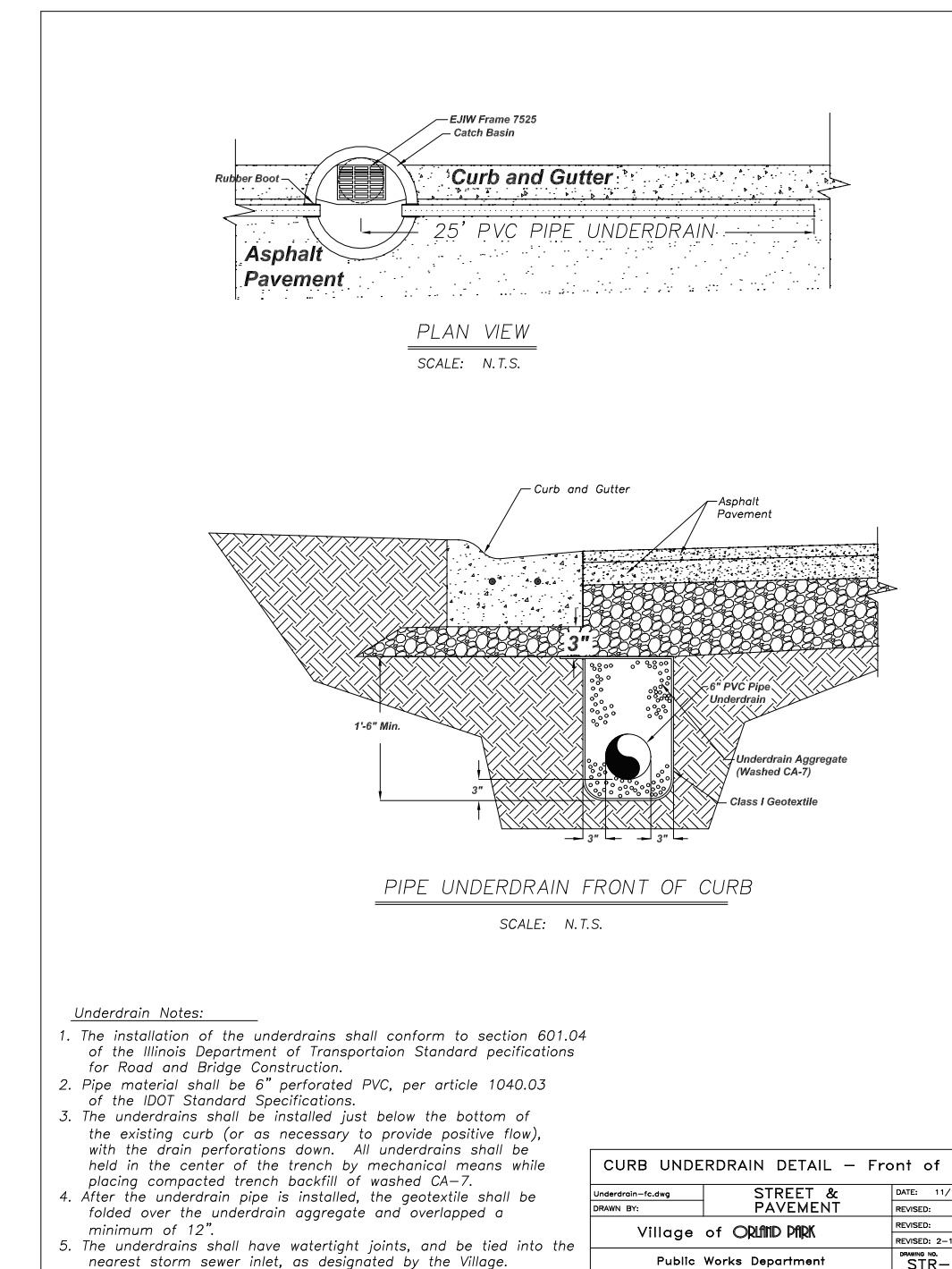
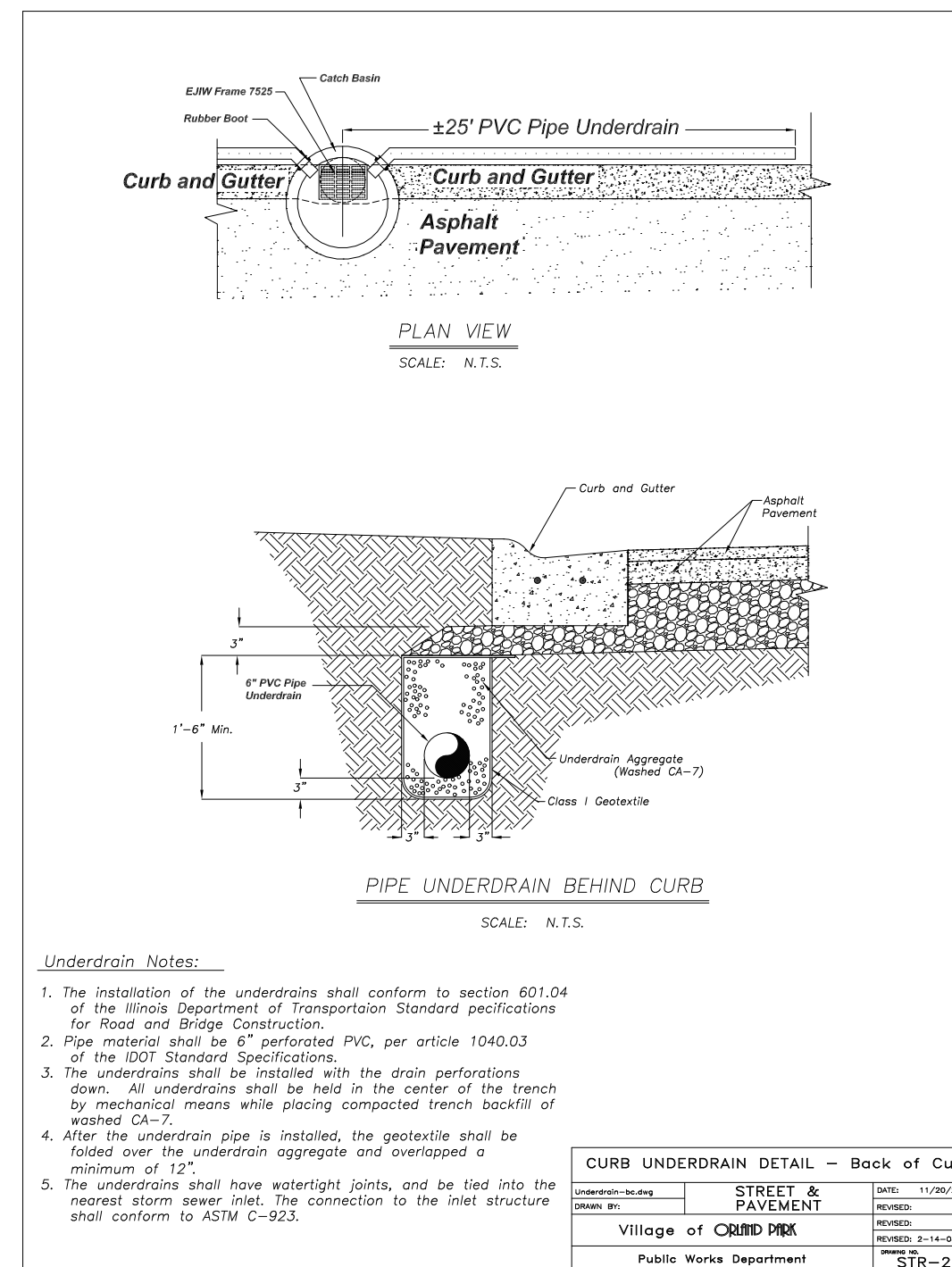
19. ALL ROADS SHALL REMAIN OPEN TO NORMAL TRAFFIC DURING CONSTRUCTION. THE CONTRACTOR SHALL PROVIDE GUIDANCE AND WARNINGS AS NEEDED TO ENSURE THE SAFE OPERATION AND PASSAGE OF ALL TRAFFIC, INCLUDING PEDESTRIANS. UNLESS OTHERWISE NOTED, THE COST OF THIS TRAFFIC CONTROL SHALL BE INCLUDED IN THE UNIT PRICE OF THE ASSOCIATED WORK.

20. THE SURFACE PROFILE OF NEW CURB AND GUTTER SECTIONS SHORTER THAN 20 L.F. SHALL MATCH EXISTING. THE SURFACE PROFILE OF SECTIONS LONGER THAN 20 SHALL MATCH THE CURB DETAILS IN THE CONTRACT. ALL CURB SHALL INCLUDE CONTINUOUS REBAR AS DETAILED IN THE SPECIFICATIONS. 3/4 INCH THICK PRE-MOLDED FIBER EXPANSION JOINTS WITH 3/4 INCH X 18 INCH PLAIN, ROUND STEEL DOWEL BARS SHALL BE INSTALLED IN ALL CURB EXPANSION JOINTS, AND AT ALL PC'S AND PT'S. ALTERNATE ENDS OF THE DOWEL BARS SHALL BE GREASED AND FITTED WITH METAL EXPANSION TUBES. ALL EXPANSION JOINTS MUST BE FREE OF CONCRETE FOR THE ENTIRE CURB DEPTH. ANY AGGREGATE REQUIRED TO ADJUST THE GRADE UNDER REMOVED CURB WILL NOT BE MEASURED FOR PAYMENT AND WILL BE CONSIDERED PART OF THE COST FOR COMBINATION CURB & GUTTER. REINFORCEMENT, JOINTS, AND DEPTH OF ALL CURB AND GUTTER SHALL MATCH THE SPECIFICATIONS AND DETAILS IN THE CONTRACT REGARDLESS OF EXISTING. CURB SHALL BE BACKFILLED WITHIN FIVE DAYS OF PLACEMENT.

21. ALL CONCRETE SIDEWALKS SHALL BE 5 INCH THICK, SET ON A 2 INCH THICK CA-6 COMPACTED STONE CUSHION. ANY AGGREGATE REQUIRED TO ADJUST THE GRADE UNDER REMOVED SIDEWALK WILL NOT BE MEASURED FOR PAYMENT AND WILL BE CONSIDERED PART OF THE COST FOR SIDEWALK. THE AGGREGATE UNDER NEW SIDEWALK WILL BE PAID FOR AS AGGREGATE BASE COURSE, TYPE B (ITEM #26). SIDEWALK SHALL BE ELEVATED 1/2 INCH ABOVE THE CURB FOR EACH FOOT OF OFFSET (OR MEET THE ADJACENT CONCRETE). ALL SIDEWALK SHALL BE BROOM FINISHED ACROSS IT'S ENTIRE SURFACE. MAXIMUM CROSS-SLOPE SHALL BE 1/4 INCH PER FOOT.

TOTAL QUANTITIES

01. PORTLAND CEMENT CONCRETE SIDEWALK 5 INCH	18250 S.F.
02. SIDEWALK REMOVAL	15250 S.F.
03. DETECTABLE WARNINGS	1202 S.F.
04. COMBINATION CONCRETE CURB & GUTTER, TYPE M-2.12	10110 L.F.
05. COMBINATION CONCRETE CURB & GUTTER, TYPE B-6.12	270 L.F.
06. COMBINATION CURB & GUTTER REMOVAL	10380 L.F.
07. CONCRETE SLAB RAISING	1150 S.F.
08. SHOTCRETE CURB REPAIR	2240 L.F.
09. REMOVE & REPLACE 6" P.C.C. DRIVEWAY PAVEMENT	780 S.F.
10. REMOVE & REPLACE 2.5" ASPHALT DRIVEWAY PAVEMENT	210 S.F.
11. PAVING BRICK DRIVEWAY REPAIR	92 S.Y.
12. STAMPED COLORED P.C.C. DRIVEWAY REPAIR, 6 INCH	110 S.F.
13. HMA IMPRINTED DRIVEWAY PAVEMENT REPAIR	6 S.Y.
14. HMA BINDER COURSE- PATH, IL-19.0, N50	142 TON
15. HMA SURFACE COURSE- PATH, MIX "C", N50	417 TON
16. EARTH EXCAVATION	631 C.Y.
17. HOT-MIX ASPHALT SURFACE REMOVAL- BUTT JOINT	1560 S.Y.
18. HOT-MIX ASPHALT SURFACE REMOVAL, 1-3/4"	14300 S.Y.
19. HOT-MIX ASPHALT SURFACE REMOVAL- EDGE MILL	32360 S.Y.
20. BITUMINOUS MATERIALS (PRIME COAT)	8060 GAL.
21. AGGREGATE (PRIME COAT)	410 GAL.
22. CLASS D PATCHES- VARIOUS TYPES	2880 TON
23. CLASS D PATCHES- VARIOUS TYPES- OFFSITE	850 TON
24. CLASS D PATCHES- VARIOUS TYPES- PATH	70 TON
25. MIXTURE FOR CRACKS, JOINTS AND FLANGWAYS	9 TON
26. AGGREGATE BASE COURSE, TYPE B	737 TON
27. TRENCH BACKFILL- CA-7	404 TON
28. TRENCH BACKFILL- CA-6	893 TON
29. POLYMERIZED LEVELING BINDER (MACHINE METHOD), N50	3825 TON
30. HOT-MIX ASPHALT SURFACE COURSE, MIX "C" N50	10000 TON
31. STRIP REFLECTIVE CRACK CONTROL TREATMENT	720 S.F.
32. SEEDING, CLASS 1 (& TOPSOIL)	1260 S.Y.
33. EROSION CONTROL BLANKET	1260 S.Y.
34. SODDING (& TOPSOIL)	2260 S.Y.
35. PIPE UNDERDRAIN, 6" PERFORATED PVC	2465 L.F.
36. INLET, TYPE A, FRAME & LID	8 EA.
37. FRAME & LID TO BE ADJUSTED (STEEL RING)	12 EA.
38. MANHOLE/INLET TO BE ADJUSTED	57 EA.
39. RECONSTRUCT MANHOLE, BLOCK	3 EA.
40. RECONSTRUCT MANHOLE, CONE SECTION	1 EA.
41. RECONSTRUCT MANHOLE, FLAT SLAB TOP	1 EA.
42. RE-MORTAR STRUCTURE	105 EA.
43. DETECTOR LOOP, TYPE 1	550 L.F.
44. THERMOPLASTIC PAVEMENT MARKING- LINE	5263 S.F.
45. THERMOPLASTIC PAVEMENT MARKING- LETTERS & SYMBOLS	109.2 S.F.
46. EPOXY PAVEMENT MARKING- 4" LINE	4100 L.F.
47. TRAFFIC CONTROL AND PROTECTION, 143RD STREET	1 L.S.



Notes and Quantities			
SCALE: NONE	2012 Road Improvement Program	DRAWN BY: RJR	
DATE: 3-27-12	Village of ORLAND PARK	REVISED: RJR	
Public Works Department		DRAWING NO.	10 OF 10