

KEVIN HERTZ MEMORIAL PARK

Centennial Park Orland Park, Illinois

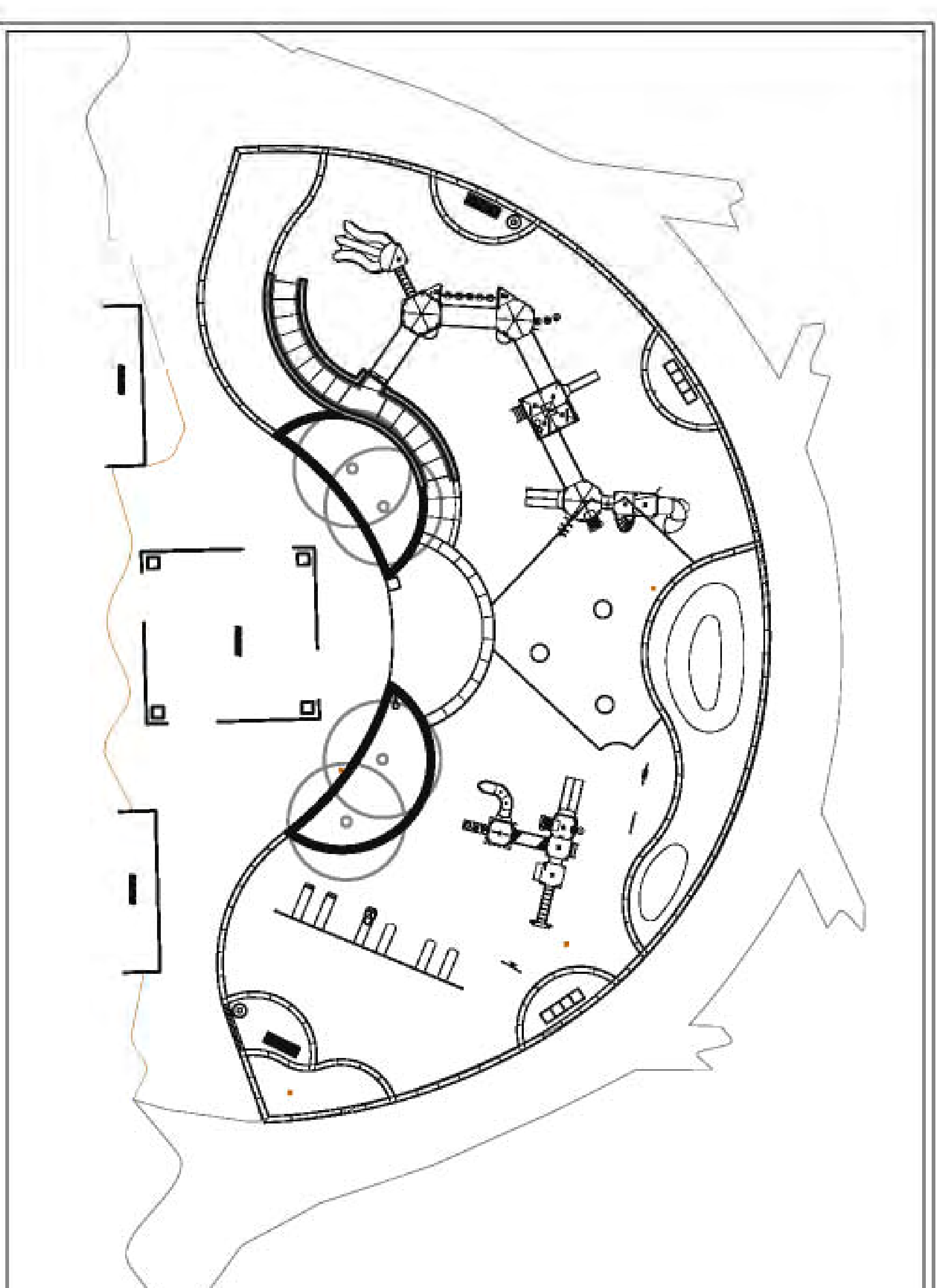
SHEET INDEX:

L-00	COVER
L-01	NOTES/SITE AMENITIES SCHEDULE
L-02	PLANTING DETAILS & NOTES
L-03	GRADING & LAYOUT PLAN
L-04	PLAYGROUND PLAN
L-05	PLANTING PLAN & SCHEDULE
L-06	DETAILS
L-07	DETAILS

VICINITY MAP:



PROJECT SITE



KEY MAP:

CLIENT:

VILLAGE OF ORLAND PARK
14700 Ravinia Avenue
Orland Park, IL 60462
708.403.6115
CONTACT: ELLEN BAER, ASSISTANT VILLAGE
MANAGER

LANDSCAPE ARCHITECTURE:

540 Duane Street
Glen Ellyn, Illinois 60137
P 630.547.8972
F 630.790.2204
www.norris-design.com
NORRIS DESIGN
Planning | Landscape Architecture
CONTACT: KEITH DEMCHINSKI
ELEN SCHMIDT

ALTERNATES AND EXCLUSIONS

- ALTERNATES
1. CUSTOM ROLL POLE ENTRY MONUMENT, SEE DETAIL 6L-48

- EXCLUSIONS
1. ALL DEMOLITION SHALL BE COMPLETED BY THE VILLAGE OF ORLAND PARK. THE GRADE SHALL BE LEFT AT APPROXIMATELY 12" BELOW FINISHED GRADE AT THE COMPLETION OF DEMOLITION. THE CONTRACTOR SHALL BE RESPONSIBLE FOR ANY CONACTION AND NECESSARY FILL AND TREE PROTECTION.
2. ALL PLANTING WILL BE COMPLETED IN A SEPARATE CONTRACT EXECUTED BY THE VILLAGE OF ORLAND PARK. THE CONTRACTOR IS NOT RESPONSIBLE FOR SOIL PREPARATION, AMENDMENTS, OR PLANTING. THE CONTRACTOR SHALL LEAVE ALL PLANTING AREAS FREE OF CONSTRUCTION DEBRIS AND SPOILS. CLEAN TOPSOIL SHALL BE ADDED TO BRING THE PLANTING BEDS UP TO 12" BELOW FINISHED GRADE IF NEEDED.

DATE	TASK
8/8/12	BID SET

NOT FOR CONSTRUCTION

GENERAL NOTES

- CONTRACTOR SHALL VISIT THE SITE TO GET A BETTER UNDERSTANDING OF THE PROJECT PRIOR TO BIDDING THE PROJECT.
- THESE PLANS SHALL NOT BE UTILIZED FOR CONSTRUCTION OR PERMITTING UNLESS STATED FOR SUCH USE IN THE TITLE BLOCK.
- DRAWINGS ARE INTENDED TO BE PRINTED ON 24"x36" PAPER. PRINTING THESE DRAWINGS AT A DIFFERENT SIZE WILL IMPACT THE SCALE. VERIFY THE GRAPHIC SCALE BEFORE REFERENCING ANY MEASUREMENTS ON THESE SHEETS. THE RECIPIENT OF THESE DRAWINGS SHALL BE RESPONSIBLE FOR ANY ERRORS RESULTING FROM INCORRECT PRINTING, COPYING, OR ANY OTHER CHANGES THAT ALTER THE SCALE OF THE DRAWINGS.
- VERIFY ALL PLAN DIMENSIONS PRIOR TO START OF CONSTRUCTION. NOTIFY THE OWNERS REPRESENTATIVE TO ADDRESS ANY QUESTIONS OR CLARIFY ANY DISCREPANCIES.
- WRITTEN DIMENSIONS TAKE PRECEDENCE OVER SCALED DIMENSIONS.
- SUBMIT A CHANGE ORDER FOR APPROVAL FOR ANY CHANGES TO WORK SCOPE RESULTING FROM FIELD CONDITIONS OR DIRECTION BY OWNERS REPRESENTATIVE WHICH REQUIRE ADDITIONAL COST TO THE OWNER PRIOR TO PERFORMANCE OF WORK.
- THE CONTRACTOR SHALL PROVIDE A STAKED LAYOUT OF ALL SITE IMPROVEMENTS FOR INSPECTION BY THE OWNERS REPRESENTATIVE AND MAKE MODIFICATIONS AS REQUIRED. ALL LAYOUT INFORMATION IS AVAILABLE IN DIGITAL FORMAT FOR USE BY THE CONTRACTOR.
- CONTRACTOR SHALL CONFIRM THAT SITE CONDITIONS ARE SIMILAR TO THE PLANS, WITHIN TOLERANCES STATED IN THE CONTRACT DOCUMENTS, AND SATISFACTORY TO THE CONTRACTOR PRIOR TO START OF WORK. SHOULD SITE CONDITIONS BE DIFFERENT THAN REPRESENTED ON THE PLANS OR UNSATISFACTORY TO THE CONTRACTOR, THE CONTRACTOR SHALL CONTACT THE OWNERS REPRESENTATIVE FOR CLARIFICATION AND FURTHER DIRECTION.
- CONTRACTOR IS RESPONSIBLE TO PAY FOR, AND OBTAIN, ANY REQUIRED APPLICATIONS, PERMITTING, LICENSES, INSPECTIONS AND METERS ASSOCIATED WITH WORK.
- THE CONTRACTOR SHALL BE RESPONSIBLE FOR ANY FINES OR PENALTIES ASSESSED TO THE OWNER RELATING TO ANY VIOLATIONS OR NON-COMPLIANCE WITH THE PLANS, SPECIFICATIONS, CONTRACT DOCUMENTS, JURISDICTIONAL CODES, AND REGULATORY AGENCIES.
- THE CONTRACTOR SHALL BE RESPONSIBLE FOR COORDINATION OF ALL UTILITY LOCATES PRIOR TO ANY EXCAVATION. NOTIFY OWNERS REPRESENTATIVE IF EXISTING OR PROPOSED UTILITIES INTERFERE WITH THE ABILITY TO PERFORM WORK.
- UNLESS IDENTIFIED ON THE PLANS FOR DEMOLITION OR REMOVAL, THE CONTRACTOR IS RESPONSIBLE FOR THE COST TO REPAIR UTILITIES ADJACENT OR EXISTING LANDSCAPE ADJACENT OR EXISTING PAVING, OR ANY PUBLIC AND PRIVATE PROPERTY THAT IS DAMAGED BY THE CONTRACTOR OR THEIR SUBCONTRACTORS OPERATIONS DURING INSTALLATION, ESTABLISHMENT OR DURING THE SPECIFIED MAINTENANCE PERIOD. ALL DAMAGES SHALL BE REPAIRED TO PRE-CONSTRUCTION CONDITIONS AS DETERMINED BY THE OWNERS REPRESENTATIVE. CONTRACTOR SHALL BE RESPONSIBLE FOR LOGGING ANY DAMAGES PRIOR TO START OF CONSTRUCTION AND DURING THE CONTRACT PERIOD.
- ALL WORK SHALL BE CONFINED TO THE AREA WITHIN THE CONSTRUCTION LIMITS AS SHOWN ON THE PLANS. ANY AREAS OR IMPROVEMENTS DISTURBED OUTSIDE THESE LIMITS SHALL BE RETURNED TO THEIR ORIGINAL CONDITION AT THE CONTRACTORS EXPENSE. IN THE EVENT THE CONTRACTOR REQUIRES A MODIFICATION TO THE CONSTRUCTION LIMITS, WRITTEN PERMISSION MUST BE OBTAINED FROM THE OWNERS REPRESENTATIVE PRIOR TO ANY DISTURBANCE OUTSIDE OF THE LIMITS OF WORK.
- THE CONTRACTOR SHALL BE RESPONSIBLE FOR THE REPAIR OF ANY OF THEIR TRENCHES OR EXCAVATIONS THAT SETTLE, INCLUDING ALL IRRIGATION DITCHES.
- THE CONTRACTOR SHALL BE RESPONSIBLE TO PREPARE AND SUBMIT A TRAFFIC CONTROL PLAN TO THE APPROPRIATE JURISDICTIONAL AGENCIES AND THE OWNERS REPRESENTATIVE IF THEIR WORK AND OPERATIONS AFFECT OR IMPACT THE PUBLIC RIGHTS-OF-WAY. OBTAIN APPROVAL PRIOR TO ANY WORK WHICH AFFECTS OR IMPACTS THE PUBLIC RIGHTS-OF-WAY. THE CONTRACTOR SHALL BE RESPONSIBLE FOR ANY FINES OR PENALTIES ASSESSED TO THE OWNER RELATING TO THIS REQUIREMENT DURING THE CONTRACT PERIOD.
- SIGHT TRIANGLES AND SIGHT LINES SHALL REMAIN UNOBTSTRUCTED BY EQUIPMENT, CONSTRUCTION MATERIALS, PLANT MATERIAL, OR ANY OTHER VISUAL OBSTACLE DURING THE CONTRACT PERIOD AND AT MATURITY OF PLANTS PER LOCAL JURISDICTIONAL REQUIREMENTS. NO PLANT MATERIAL OTHER THAN GRASS COVER IS ALLOWED TO BE PLANTED ADJACENT TO FIRE HYDRANTS AS STIPULATED BY JURISDICTIONAL REQUIREMENTS.

PAVING LAYOUT NOTES

- THE CONTRACTOR SHALL INSTALL OR COORDINATE INSTALLATION OF SLEEVING FOR IRRIGATION AND UTILITY IMPROVEMENTS PRIOR TO INSTALLING ALL PAVING. REFER TO IRRIGATION AND UTILITY PLANS FOR SIZE AND LOCATIONS.
- CONTRACTOR SHALL COORDINATE AND BE RESPONSIBLE FOR ALL SUB-GRADE COMPACTION UNDER PAVED AREAS. REFER TO PLANS, DETAILS, SPECIFICATIONS OR GEOTECHNICAL REPORTS WHICH IDENTIFY COMPACTION REQUIREMENTS. COORDINATE ALL COMPACTION TESTING WITH OWNERS REPRESENTATIVE. CONTRACTOR SHALL BE FINANCIALLY RESPONSIBLE FOR THE REPLACEMENT OF ANY PAVING THAT CRACKS OR MOVES RESULTING FROM IMPROPER COMPACTION. CURVED WALKS AND CURB EDGES ARE INTENDED TO BE CONSTRUCTED WITH SMOOTH FLOWING CURVES. ANYTHING OTHER THAN SMOOTH FLOWING CURVES WILL BE REJECTED AS DETERMINED BY THE OWNERS REPRESENTATIVE.
- LAYOUT ALL SURFACING, SCORE JOINTS AND PAVING PATTERNS AS CLOSELY AS POSSIBLE TO PLANS, DETAILS, AND SPECIFICATIONS. DO NOT DEVIATE FROM PLANS UNLESS SPECIFIC APPROVAL IS OBTAINED FROM THE OWNERS REPRESENTATIVE.
- CONTRACTOR SHALL COORDINATE A FORM INSPECTION WITH THE OWNERS REPRESENTATIVE NO LESS THEN 24 HOURS PRIOR TO PLACEMENT OF ANY SURFACING.
- CONCRETE EDGES, SAW CUTS AND/OR TOWELED SCORE JOINTS SHALL BE CRISP, CLEAN, COMPLETE AND NEAT IN APPEARANCE. LOCATE ALL JOINTS AS IDENTIFIED ON THE PLANS OR AS DIRECTED BY THE OWNERS REPRESENTATIVE.
- ALL EXPOSED PAVING SHALL BE FINISHED PER DETAILS.
- CONTRACTOR SHALL PROVIDE ALL PROTECTION AND FACILITIES NECESSARY TO INSURE PROPER CURING AND FINISH OF PAVING.

NOT FOR CONSTRUCTION

FURNITURE / PLAYGROUND NOTES

- CONTRACTOR SHALL ASSURE THAT ALL FASTENERS ARE TIGHT, PROTRUDING BOLTS ARE TRIMMED FLUSH AND PENNED, FINING SMOOTH ANY RESULTANT SHARP METAL EDGES OF ALL PLAYGROUND FEATURES, SITE FURNITURE AND SITE AMENITIES.
- CONTRACTOR IS RESPONSIBLE FOR SECURING PLAYGROUND ELEMENTS UNTIL INSTALLATION OF SAFETY SURFACING AND INITIAL ACCEPTANCE OF PLAYGROUND ELEMENTS IS GRANTED.
- CONTRACTOR SHALL PROVIDE STRUCTURAL FOOTING DESIGN FOR ALL SITE FEATURE ELEMENTS IF STRUCTURAL FOOTING DESIGN ARE NOT PROVIDED BY A LICENSED STRUCTURAL ENGINEER AS PART OF THESE PLANS.
- PLAYGROUND INSTALLATION SHALL BE CERTIFIED FOR SAFETY BY AN PEIA PROFESSIONAL PRIOR TO INITIAL ACCEPTANCE. CONTRACTOR SHALL PROVIDE DOCUMENTATION OF INSPECTION AND APPROVAL AS PART OF THE PROJECT TURN-OVER ITEMS.

SITE AMENITIES SCHEDULE

ITEM	DESCRIPTION	MANUFACTURER	CONTACT	MODEL NUMBER	COLOR	NOTES
1	BENCH*	DIAMOR	NITTOVS KEVIN DRISCOLL 708.579.9055	BENCH 164-60 (QUANTITY OF 2)	GREEN	SURFACE MOUNT. INSTALL PER MANUFACTURERS SPECIFICATIONS
2	STADIUM SEATS*	AMERICAN SEATING	ERIC RUD 647.672.3124	AMERICAN SEATING MODEL: 505-P (QUANTITY OF 8)	DARK GREEN	SURFACE MOUNT. INSTALL PER MANUFACTURERS SPECIFICATIONS
3	PLAYGROUND FENCE	AMERSTAR	ERIC RUD 647.672.3124	MONTAGE PLUS MAESTRO STYLE 4" TALL	BLACK	INSTALL PER MANUFACTURERS SPECIFICATIONS
4	TBASH RECEPTACLE*	DIAMOR	NITTOVS KEVIN DRISCOLL 708.579.9055	6" x 22" (QUANTITY OF 2)	GREEN	SURFACE MOUNT. INSTALL PER MANUFACTURERS SPECIFICATIONS
5	POURED IN PLACE SURFACING	KNOTTJFF	TOTAL SURFACE ERICK OLSSON 647.657.0808		60% TAN 20% DARK GRAY SURFACE PADS: TAN	INCLUDE GRASS EMBOSSING. INSTALL PER MANUFACTURERS SPECIFICATIONS
6	X-GRASS SAFETY SURFACING	X-GRASS PLAY	CUNNINGHAM RECREATION GARRY GRAYHAM 800.942.1022		SERRA	
7	CONCRETE PAVERS	UNILOCK	UNILOCK ALGODE RODRIGUEZ 630.882.2191	HOLLAND PREMIER 7.6x8x2.75		CONTRACTOR TO PROVIDE SHOP DRAWINGS FOR APPROVAL.
8	36" DIA. CUSTOM CONCRETE BASEBALL STRUCTURES	WALSHU TILE	WALSHU TILE KEVIN DRISCOLL 800.386.8728		CUSTOM WHITE WITH RED SITTING	CONTRACTOR TO PROVIDE SHOP DRAWINGS FOR APPROVAL.
9	SWING STRUCTURE*	LANDSCAPE STRUCTURES	NITTOVS KEVIN DRISCOLL 708.579.9055			INSTALL PER MANUFACTURERS SPECIFICATIONS
10	2.6' YEAR OLD PLAY STRUCTURE*	LANDSCAPE STRUCTURES	NITTOVS KEVIN DRISCOLL 708.579.9055			INSTALL PER MANUFACTURERS SPECIFICATIONS
11	5-12 YEAR OLD PLAY STRUCTURE*	LANDSCAPE STRUCTURES	NITTOVS KEVIN DRISCOLL 708.579.9055			INSTALL PER MANUFACTURERS SPECIFICATIONS
12	SAFETY TILES	TOTAL SURFACE ERICK OLSSON 647.657.0808		2'x2' TILE TO MEET ALL SAFETY STANDARDS		SURFACE PADS: TAN TO MATCH POURED IN PLACE
13	ALTERNATE CUSTOM FOUL POLE SIGN	CUSTOM	MERCERS FABRICATION 708.709.8640 OR APPROVED EQUAL			CONTRACTOR TO PROVIDE SHOP DRAWINGS FOR APPROVAL.

* ITEM TO BE PURCHASED BY THE VILLAGE. CONTRACTOR RESPONSIBLE FOR INSTALLATION

NOTE
ALL SITE AMENITY LOCATIONS SHALL BE APPROVED IN THE FIELD BY THE OWNERS REPRESENTATIVE PRIOR TO FINAL FLASHING

GENERAL GRADING NOTES

- PRELIMINARY AND FINAL GRADES SHALL BE ESTABLISHED BY THE CONTRACTOR. IF EXISTING CONDITIONS DIFFER FROM WHAT IS INDICATED ON THE SURVEY, NOTIFY THE OWNERS REPRESENTATIVE PRIOR TO PROCEEDING WITH WORK.
- THE CONTRACTOR IS TO ADHERE TO SPOT ELEVATIONS AND CONTOURS AS INDICATED ON THE GRADING PLAN UNLESS SPECIFICALLY AUTHORIZED BY THE OWNERS REPRESENTATIVE.
- ALL AREAS SHALL BE GRADED TO ACHIEVE POSITIVE DRAINAGE.
- EXCAVATION INCLUDES ALL MATERIAL ENCOUNTERED TO WHATEVER DEPTH INDICATED ON THE PLANS. EXCAVATE TO ALLOW FOR PROPER FILL MATERIAL, SLABS, VOIDS, FORMS, AND FOUNDATIONS.
- CALL UTILITY LOCATORS PRIOR TO START OF ANY REMOVALS OR CONSTRUCTION. THE CONTRACTOR IS RESPONSIBLE FOR THE COST TO REPAIR ANY UTILITIES OR EXISTING SITE FEATURES DAMAGED DUE TO CONSTRUCTION ACTIVITIES.
- REFER TO SPECIFICATIONS FOR FURTHER INFORMATION REGARDING GRADING AND EXCAVATION FOR THIS PROJECT.
- WHEN MOISTURE CONTENT AND CONDITIONS OF EACH SPREAD LAYER ARE SATISFACTORY, COMPACT PER SPECIFICATIONS.

KEVIN HERTZ MEMORIAL PLAYGROUND

CENTENNIAL PARK
ORLAND PARK, IL

NORRIS DESIGN
Planning | Landscape Architecture

540 Duane Street
Glen Ellyn, IL 60137
P 630.547.9372
F 630.790.2204
www.norris-design.com

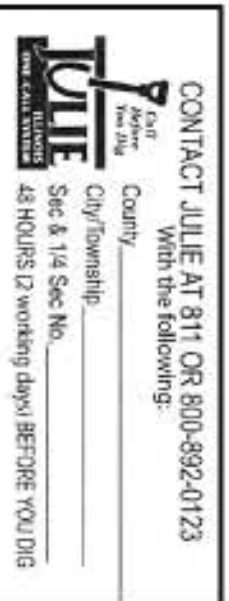
Owner:
VILLAGE OF ORLAND PARK
RECREATION & PARKS DEPT.
ORLAND PARK, IL
708.403.6219
708.403.6299

Issue Date
8/6/12 Bld Set

Revision Date

Sheet Title
NOTES / SITE
AMENITIES SCHEDULE

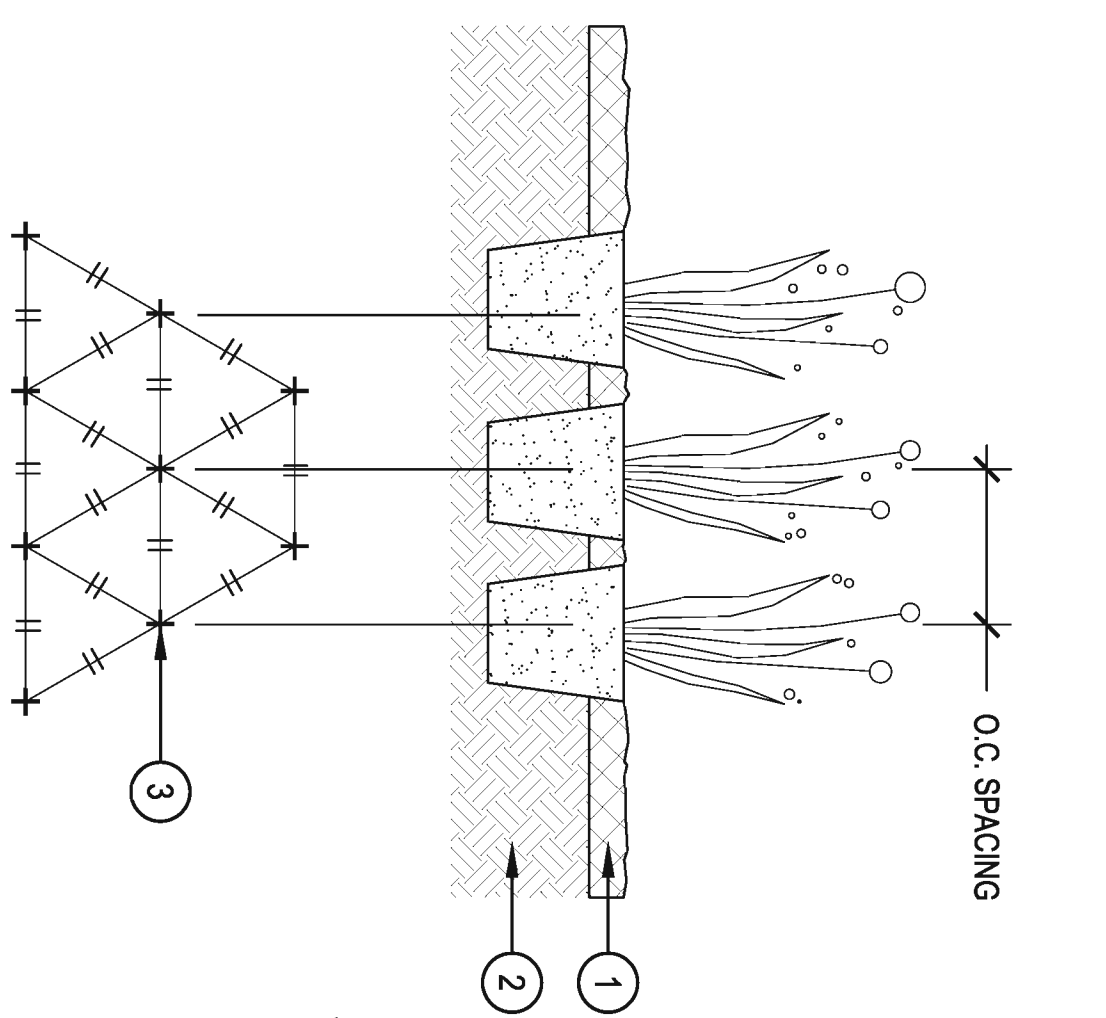
Sheet Number
L-01



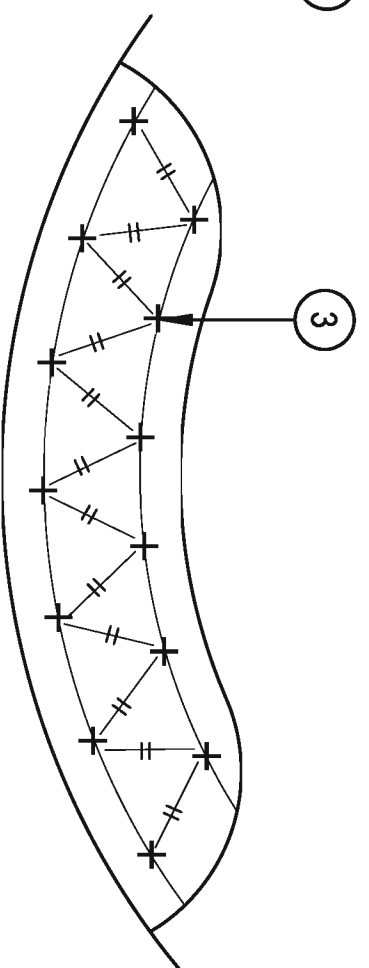
CONTACT TITLE AT 811 OR 800-882-0173

City, County, State

Site & 1/4 Scale
4x8 inches @ working length (8.5' x 11.0')



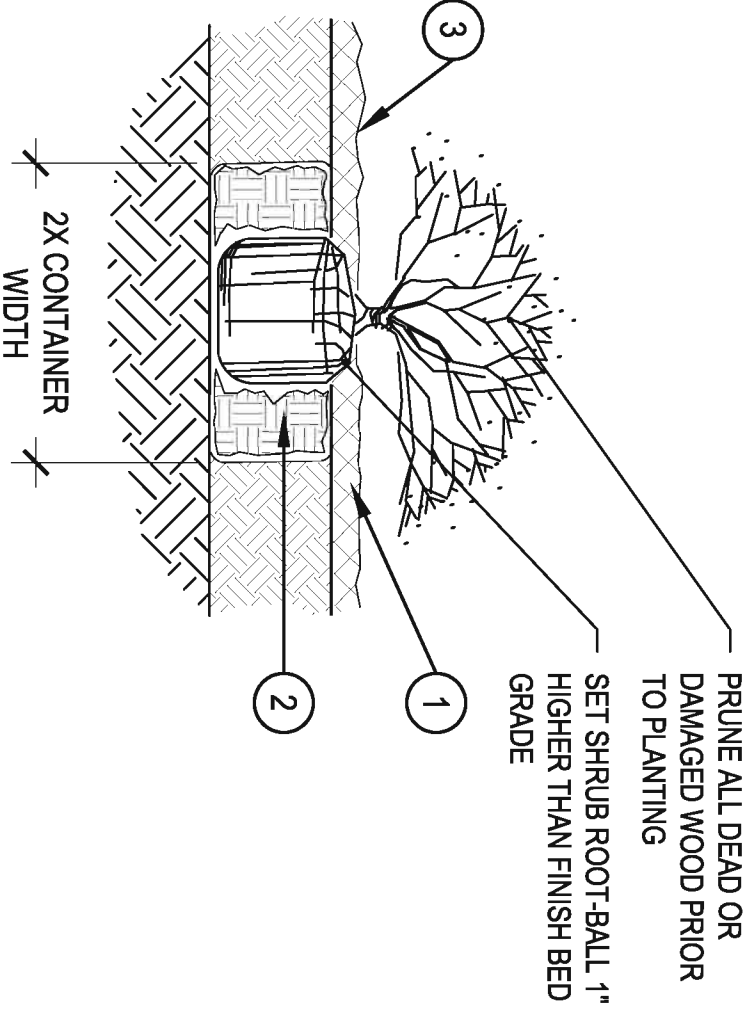
- 1 SPECIFIED MULCH
- 2 AMENDED PLANTING BED PER SPECIFICATIONS TILLED TO A DEPTH OF 6"
- 3 CENTER OF PLANT



1 PERENNIAL PLANT LAYOUT

SCALE: 1" = 1'-0"

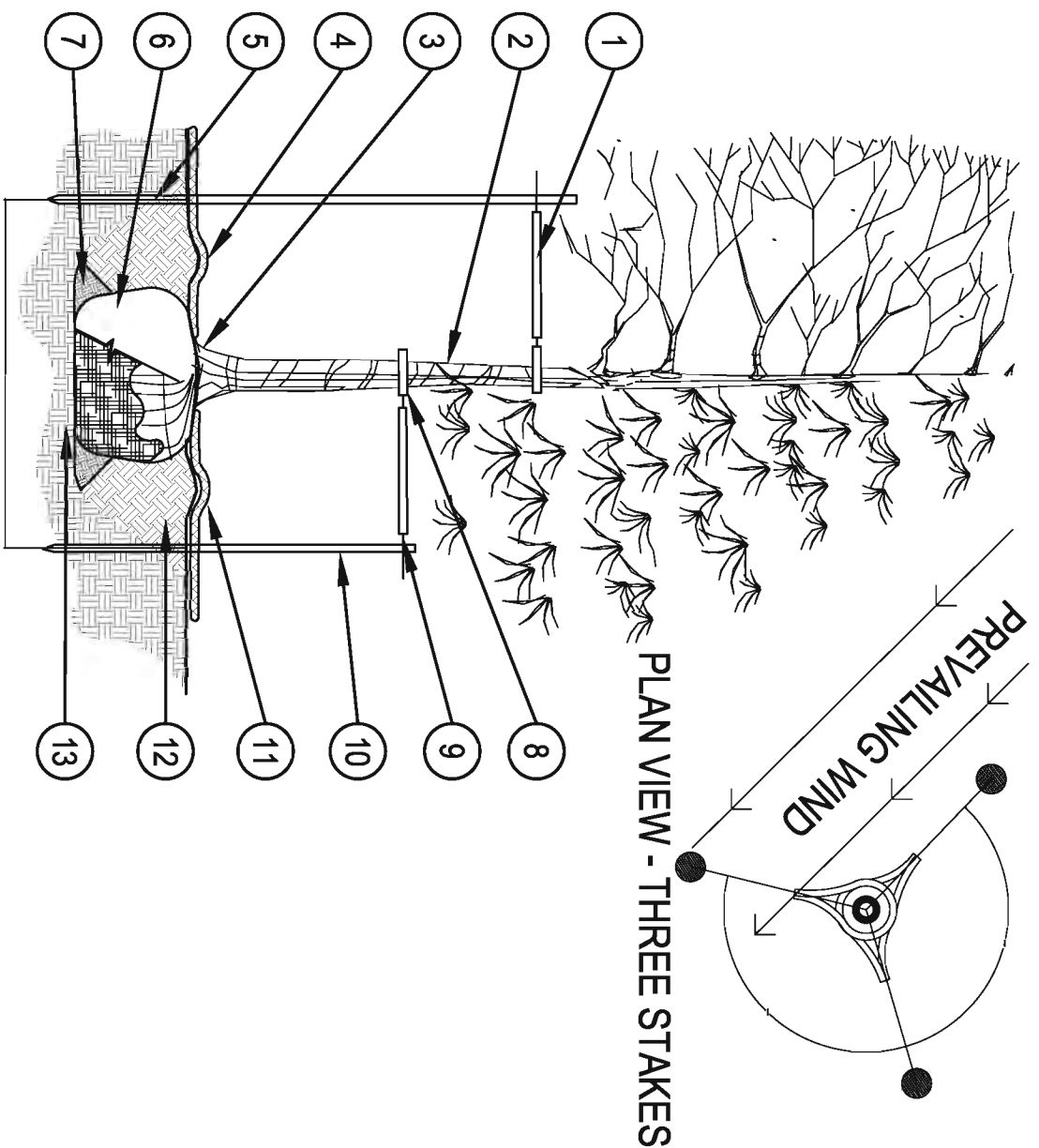
- 1 SPECIFIED MULCH
- 2 AMENDED SOIL IN PLANTING BED PER SPECIFICATIONS. TILL SOIL TO A DEPTH OF EIGHT INCHES.
- 3 FINISH GRADE (TOP OF MULCH)



- 1 BROKEN OR CRUMBLING ROOT-BALLS WILL BE REJECTED
- 2 CARE SHOULD BE TAKEN NOT TO DAMAGE THE SHRUB OR ROOT-BALL WHEN REMOVING IT FROM ITS CONTAINER
- 3 ALL LIMBERS SHOULD BE PLANTED SO THE TOP OF THE ROOT-BALL OCCURS ABOVE THE FINISH GRADE OF THE MULCH LAYER
- 4 DIG PLANT PIT TWICE AS WIDE AND HIGH AS THE CONTAINER

2 SHRUB PLANTING

SCALE: 1-1/2" = 1'-0"



- PRUNING NOTES:**
- ALL PRUNING SHALL COMPLY WITH ANSI A300 STANDARDS.
 - DO NOT HEAVILY PRUNE THE TREE AT PLANTING. PRUNE ONLY CROSSOVER LIMBS, CO-DOMINANT LEADERS AND BROKEN BRANCHES. SOME INTERIOR TWIGS AND LATERAL BRANCHES MAY BE PRUNED. HOWEVER, DO NOT REMOVE THE TERMINAL BUDS OF BRANCHES THAT EXTEND TO THE EDGE OF THE CROWN.
- STAKING NOTES:**
- STAKE TREES PER FOLLOWING SCHEDULE. THEN REMOVE AT END OF FIRST GROWING SEASON. FOLLOWS:
 - 1-1/2" CALIPER SIZE - MIN. 1 STAKE ON SIDE OF PREVAILING WIND (GENERALLY N.W. SIDE)
 - 1-1/2" - 3" CALIPER SIZE - MIN. 2 STAKES - ONE ON N.W. SIDE, ONE ON S.W. SIDE (OR PREVAILING WIND SIDE AND 180° FROM THAT SIDE)
 - 3" CALIPER SIZE AND LARGER - 3 STAKES PER DIAGRAM
 - WIRE OR CABLE SHALL BE MIN. 1/2" GAUGE. TIGHTEN WIRE OR CABLE ONLY ENOUGH TO KEEP FROM SLIPPING. ALLOW FOR SOME TRUNK MOVEMENT. NYLON STRAPS SHALL BE LONG ENOUGH TO ACCOMMODATE 1-1/2" OF GROWTH AND BUFFER ALL BRANCHES FROM WIRE.

3 TREE PLANTING DETAIL

SCALE: 3/16" = 1'-0"

- PLACE MIN. 1/2" PVC PIPE AROUND EACH WIRE. EXPOSED WIRE SHALL BE MAX. 2" EACH SIDE
- TREE WRAP TO BE INSTALLED ONLY FROM OCTOBER 15 THROUGH APRIL 15 (DECIDUOUS ONLY)
- PLANT TREE SO THAT FIRST ORDER MAJOR ROOT IS 1'-2" ABOVE FINAL GRADE.
- 3" DEEP MULCH RING PLACED A MINIMUM OF 4 FT. IN DIAMETER. DO NOT PLACE MULCH IN CONTACT WITH TREE TRUNK (FINISHED GRADE REFERENCES TOP OF MULCH).
- 1/4" SLOPE ON SIDES OF PLANTING HOLE.
- REMOVE ALL TWINE, ROPE, BURLAP AND WIRE FROM ENTIRE ROOT BALL AND TRUNK
- PLACE SOIL AROUND ROOT BALL FIRMLY. DO NOT COMPACT OR TAMP. SETTLE SOIL WITH WATER TO FILL ALL AIR POCKETS.
- GROMMETTED NYLON STRAPS
- GALVANIZED WIRE, MIN. 12 GAUGE CABLE - TWIST WIRE ONLY TO KEEP FROM SLIPPING.
- 6 FT. STEEL T-POST (SEE SCHEDULE). ALL SHALL BE DRIVEN OUTSIDE ROOTBALL AND IN UNDISTURBED SOIL.
- 4-6" HIGH WATER GAUGER IN NON-TURF AREAS.
- BACKFILL WITH BLEND OF EXISTING SOIL AND A MAXIMUM 20% (BY VOLUME) ORGANIC MATERIAL. WATER THOROUGHLY WHEN BACKFILLING.
- PLACE ROOT BALL ON UNDISTURBED SOIL TO PREVENT SETTLEMENT.

LANDSCAPE NOTES

- THE CONTRACTOR SHALL FOLLOW THE LANDSCAPE PLANS AND SPECIFICATIONS AS CLOSELY AS POSSIBLE. ANY SUBSTITUTION OR ALTERATION SHALL NOT BE ALLOWED WITHOUT APPROVAL OF THE OWNERS REPRESENTATIVE. OVERALL PLANT QUANTITY AND QUALITY SHALL BE CONSISTENT WITH THE PLANS.
- THE CONTRACTOR IS RESPONSIBLE FOR VERIFYING ALL PLANT QUANTITIES. GRAPHIC QUANTITIES TAKE PRECEDENCE OVER WRITTEN QUANTITIES.
- THE OWNERS REPRESENTATIVE RESERVES THE RIGHT TO INSPECT AND TAG ALL PLANT MATERIAL PRIOR TO SHIPPING TO THE SITE. IN ALL CASES, THE OWNERS REPRESENTATIVE MAY REJECT PLANT MATERIAL AT THE SITE IF MATERIAL IS DAMAGED, DISEASED, OR DECLINING IN HEALTH AT THE TIME OF ON-SITE INSPECTIONS OR IF THE PLANT MATERIAL DOES NOT MEET THE MINIMUM SPECIFIED STANDARD IDENTIFIED ON THE PLANS AND IN THE SPECIFICATIONS. THE CONTRACTOR SHALL COORDINATE WITH THE OWNERS REPRESENTATIVE FOR INSPECTION AND APPROVAL OF ALL MATERIALS AND PRODUCTS PRIOR TO INSTALLATION.
- THE OWNERS REPRESENTATIVE MAY ELECT TO UPSIZE PLANT MATERIAL AT THEIR DISCRETION BASED ON SELECTION, AVAILABILITY, OR TO ENHANCE SPECIFIC AREAS OF THE PROJECT. THE CONTRACTOR SHALL VERIFY PLANT MATERIAL SIZES WITH OWNERS REPRESENTATIVE PRIOR TO PURCHASING, SHIPPING OR STOCKING OF PLANT MATERIALS. SUBMIT CHANGE ORDER REQUEST TO OWNERS REPRESENTATIVE FOR APPROVAL. IF ADDITIONAL COST IS REQUESTED BY THE CONTRACTOR PRIOR TO INSTALLATION, RE-STOCKING CHARGES WILL NOT BE APPROVED IF THE CONTRACTOR FAILS TO SUBMIT A REQUEST FOR MATERIAL CHANGES.
- THE CONTRACTOR SHALL WARRANT ALL CONTRACTED WORK AND MATERIALS FOR A PERIOD OF ONE YEAR AFTER SUBSTANTIAL COMPLETION HAS BEEN ISSUED BY THE OWNERS REPRESENTATIVE FOR THE ENTIRE PROJECT UNLESS OTHERWISE SPECIFIED IN THE CONTRACT DOCUMENTS OR SPECIFICATIONS.
- REFER TO IRRIGATION PLANS FOR LIMITS AND TYPES OF IRRIGATION DESIGNED FOR THE LANDSCAPE. IN NO CASE SHALL IRRIGATION BE EMITTED WITHIN THE MINIMUM DISTANCE FROM BUILDING OR WALL FOUNDATIONS AS STIPULATED IN THE GEOTECHNICAL REPORT. ALL IRRIGATION DISTRIBUTION LINES, HEADS AND EMITTERS SHALL BE KEPT OUTSIDE THE MINIMUM DISTANCE AWAY FROM ALL BUILDING AND WALL FOUNDATIONS AS STIPULATED IN THE GEOTECHNICAL REPORT.
- THE LANDSCAPE MATERIAL LOCATIONS SHALL HAVE PRECEDENCE OVER IRRIGATION MAINLINE AND LATERAL LOCATIONS. COORDINATE INSTALLATION OF IRRIGATION EQUIPMENT SO THAT IT DOES NOT INTERFERE WITH THE PLANTING OF TREES OR OTHER LANDSCAPE MATERIAL.
- THE LANDSCAPE CONTRACTOR SHALL BE RESPONSIBLE FOR ENSURING POSITIVE DRAINAGE EXISTS IN ALL LANDSCAPE AREAS. SURFACE DRAINAGE ON LANDSCAPE AREAS SHALL NOT FLOW TOWARD STRUCTURES AND FOUNDATIONS. MAINTAIN SLOPE AWAY FROM FOUNDATIONS PER THE GEOTECHNICAL REPORT RECOMMENDATIONS. ALL LANDSCAPE AREAS BETWEEN WALKS AND CURBS SHALL DRAIN FREELY TO THE CURB UNLESS OTHERWISE IDENTIFIED ON THE GRADING PLAN. IN NO CASE SHALL THE GRADE, TURF THATCH, OR OTHER LANDSCAPE MATERIALS DAM WATER AGAINST WALKS. MINIMUM SLOPES ON LANDSCAPE AREAS SHALL BE 2%. MAXIMUM SLOPE SHALL BE 25% UNLESS SPECIFICALLY IDENTIFIED ON THE PLANS OR APPROVED BY THE OWNERS REPRESENTATIVE.
- PRIOR TO INSTALLATION OF PLANT MATERIALS, AREAS THAT HAVE BEEN COMPACTED OR DISTURBED BY CONSTRUCTION ACTIVITY SHALL BE THOROUGHLY LOOSENED TO A DEPTH OF 8" - 12" AND AMENDED PER SPECIFICATIONS.
- ALL LANDSCAPED AREAS ARE TO RECEIVE ORGANIC SOIL PREPARATION AT 3 cu.yards/1,000sf OR AS NOTED IN THE TECHNICAL SPECIFICATIONS.
- TREES SHALL NOT BE LOCATED IN DRAINAGE SWALES, DRAINAGE AREAS, OR UTILITY EASEMENTS. CONTACT OWNERS REPRESENTATIVE FOR RELOCATION OF PLANTS IN QUESTIONABLE AREAS PRIOR TO INSTALLATION.
- ALL EVERGREEN TREES SHALL BE FULLY BRANCHED TO THE GROUND AND SHALL NOT EXHIBIT SIGNS OF ACCELERATED GROWTH AS DETERMINED BY THE OWNERS REPRESENTATIVE.
- ALL TREES ARE TO BE STAKED AND GUYED PER DETAILS FOR A PERIOD OF 1 YEAR. THE CONTRACTOR SHALL BE RESPONSIBLE FOR REMOVING STAKES AT THE END OF 1-YEAR FROM ACCEPTANCE OF LANDSCAPE INSTALLATION BY THE OWNERS REPRESENTATIVE.
- TREE WRAP SHALL BE APPLIED IN LATE FALL AFTER INSTALLATION AND REMOVED THE FOLLOWING SPRING. TREES GREATER THEN 4" IN CALIPER MAY NOT REQUIRE TREE WRAP IF BARK IS SUFFICIENTLY DEVELOPED. OBTAIN APPROVAL FROM OWNERS REPRESENTATIVE FOR ANY TREES THAT WILL NOT BE WRAPPED.
- ALL SHRUB BEDS ARE TO BE MULCHED WITH MIN. 4" DEPTH, SHREDDED HARDWOOD LANDSCAPE MULCH OVER SPECIFIED GEOTEXTILE WEED CONTROL FABRIC. ALL GROUND COVER AND PERENNIAL FLOWER BEDS SHALL BE MULCHED WITH 3" DEPTH SHREDDED HARDWOOD LANDSCAPE MULCH. NO WEED CONTROL FABRIC IS REQUIRED IN GROUND COVER OR PERENNIAL AREAS.
- EXISTING TURF AREAS THAT ARE DISTURBED DURING CONSTRUCTION, ESTABLISHMENT AND THE MAINTENANCE PERIOD SHALL BE RESTORED WITH NEW SOD TO MATCH EXISTING TURF SPECIES.
- WHEN COMPLETE, ALL GRADES SHALL BE WITHIN +/- 1/8" OF FINISHED GRADES AS SHOWN ON THE PLANS.

KEVIN HERTZ MEMORIAL PLAYGROUND

CENTENNIAL PARK

ORLAND PARK, IL

Owner:
VILLAGE OF ORLAND PARK,
RECREATION & PARKS DEPT.,
ORLAND PARK, IL
708.403.6219
708.403.6289

Issue Date
8/6/12 Bid Set

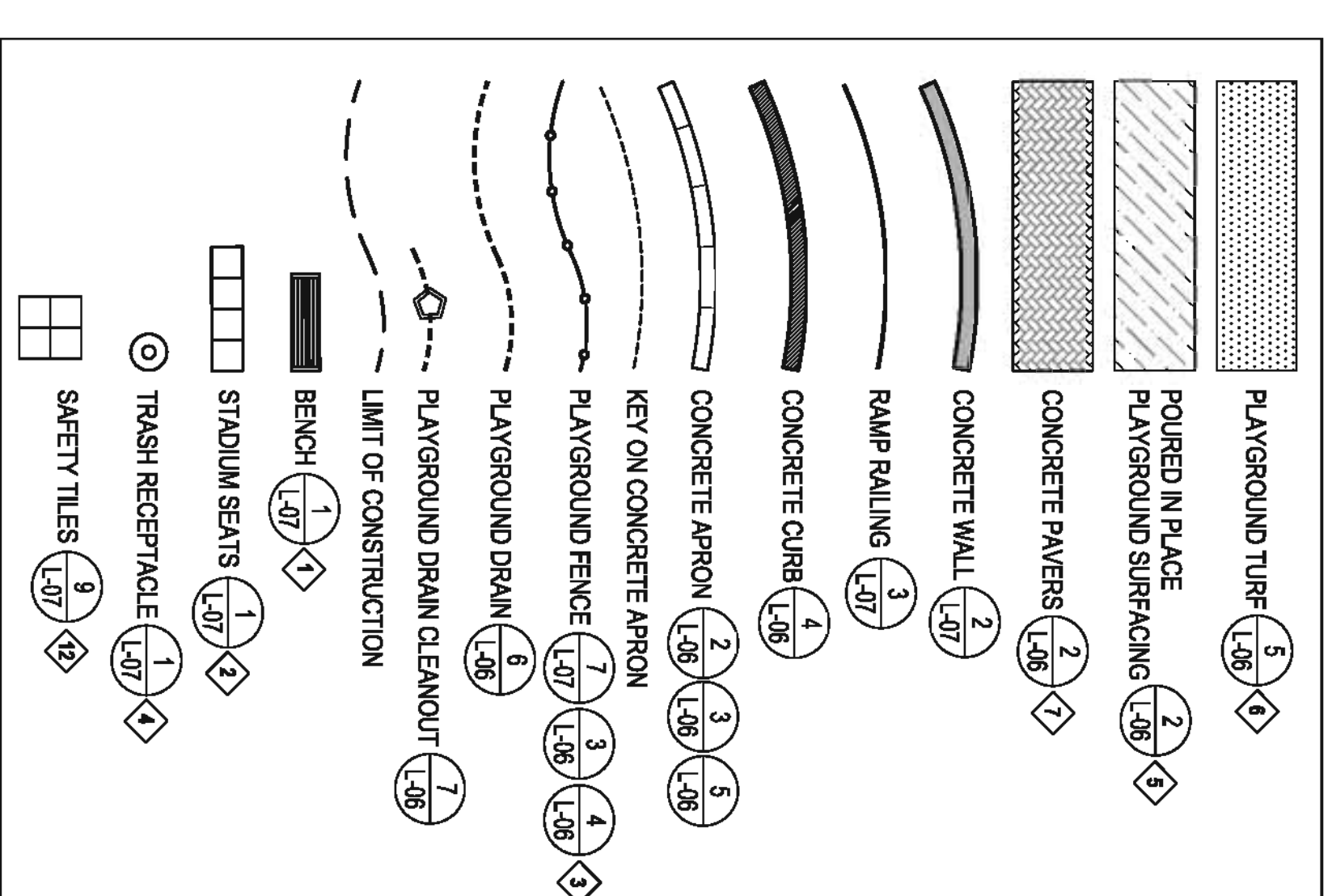
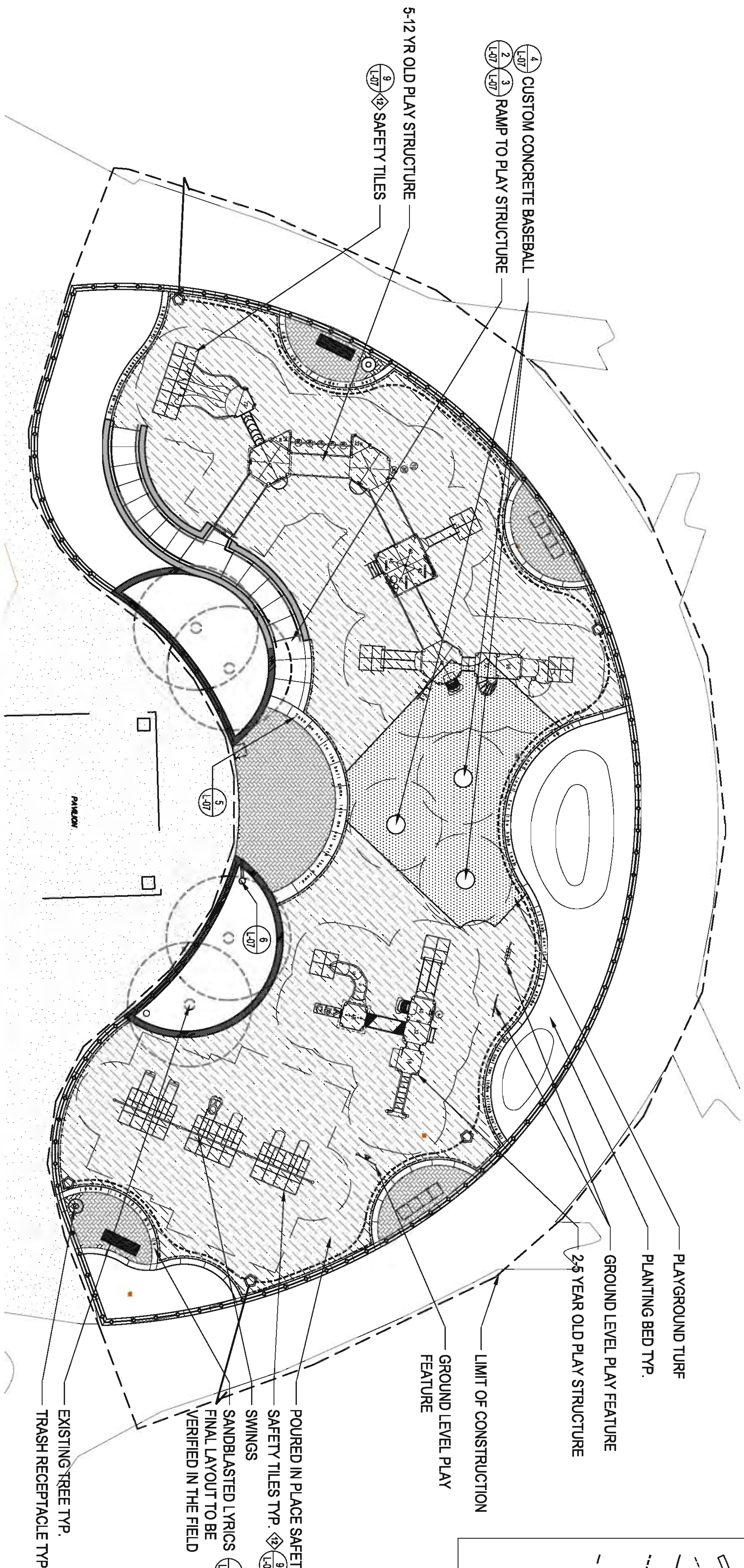
Revision Date

Sheet Title
PLANTING DETAILS
& NOTES

Sheet Number
L-02

NOT FOR CONSTRUCTION

NOT FOR CONSTRUCTION



LEGEND

KEVIN HERTZ MEMORIAL PLAYGROUND
CENTENNIAL PARK
ORLAND PARK, IL

Owner:
VILLAGE OF ORLAND PARK
RECREATION & PARKS DEPT.
ORLAND PARK, IL
708.403.6219
708.403.6299

Issue Date
8/6/12 Bld. Set

Revision Date

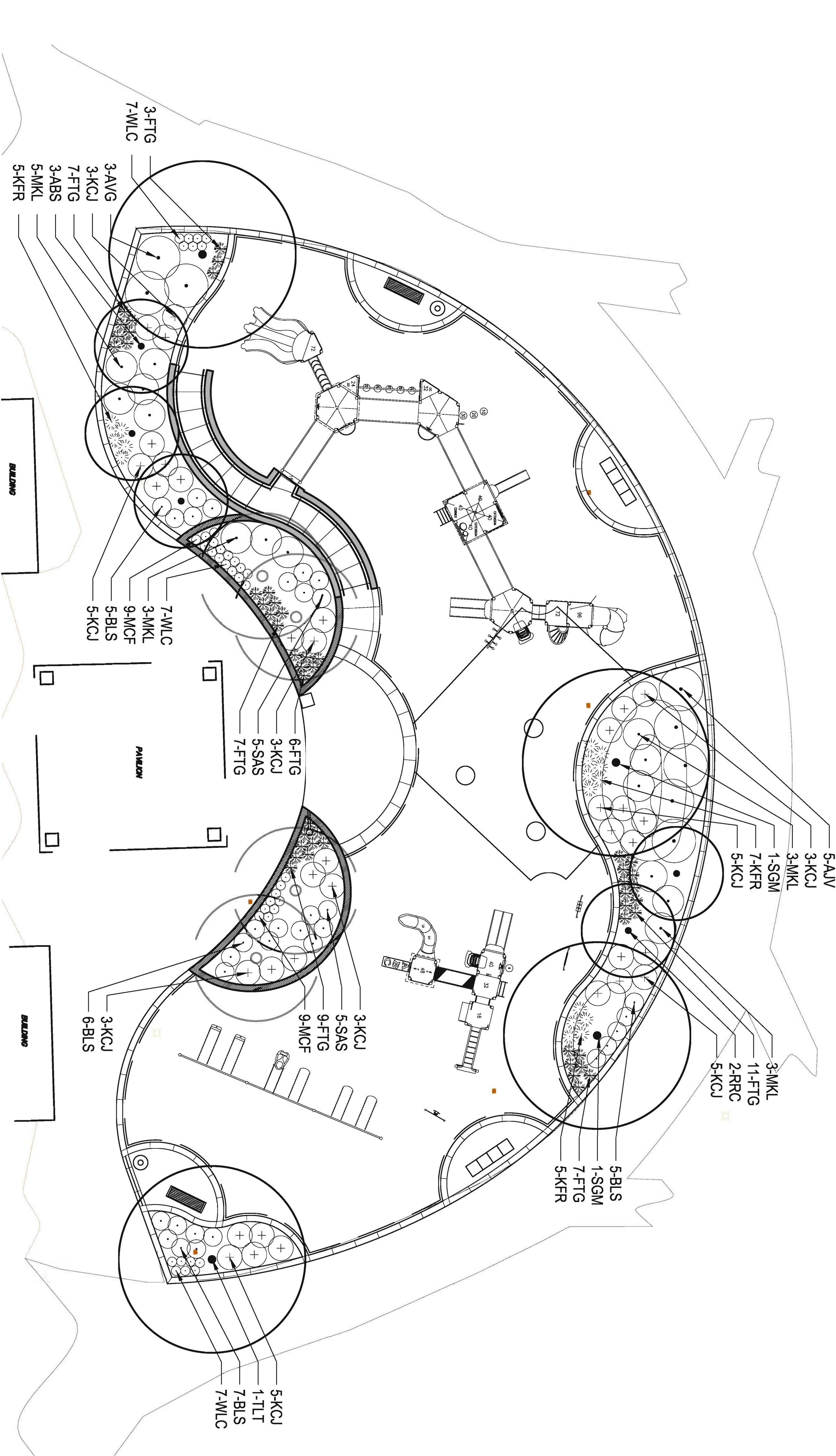
Sheet Title

PLAYGROUND PLAN

Sheet Number
L-04

CONTACT JUIE AT 811 OR 800-882-0123
For all
City, County, or State
Requirements,
With the following:
JUIE
See 611 for
standards & working days before you dig

NORTH
SCALE: 1"=10'
0 5' 10' 20'



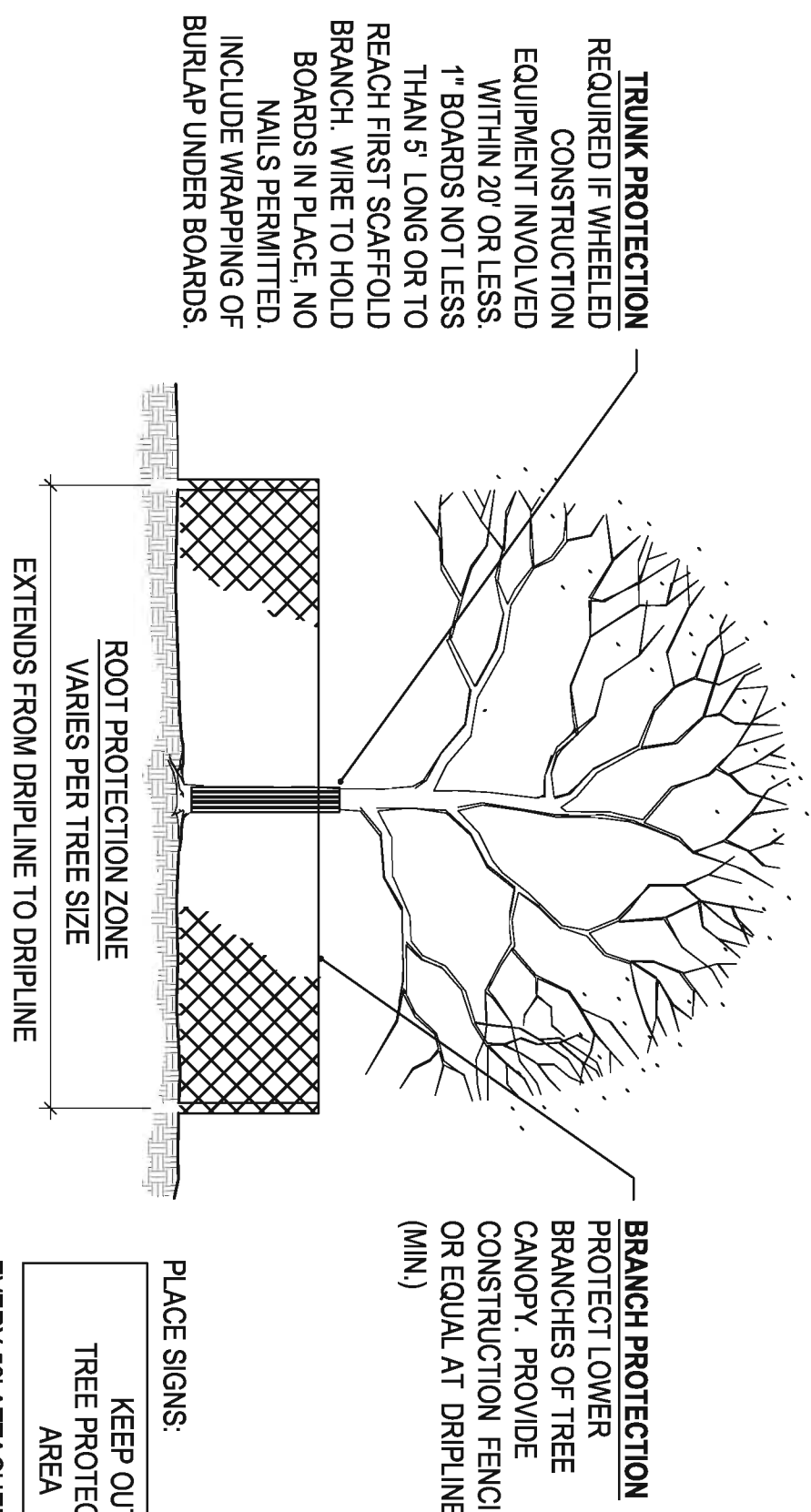
PLANT SCHEDULE

QTY	SYML	COMMON NAME	BOTANICAL NAME	SIZE & CONDITION
DECIDUOUS CANOPY TREES				
2	TLT	TULIP TREE	LIRIODENDRON TULIPIFERA	3" CAL. BAR, GUY & STAKE
2	SGM	SIENNA GLEN MAPLE	ACER X FREEMANNI SIENNA GLEN	3" CAL. BAR, GUY & STAKE
DECIDUOUS ORNAMENTAL TREES				
3	ABS	AUTUMN BRILLIANCE SERVICEBERRY	AMEL ANCHER X GRAND 'AUTUMN BRILLIANCE'	7" MULTI-STEM BAR
2	DMC	ROYAL RAINBOWS ORB	MALUS ROYAL RAINBOWS	25" CAL. BAR, GUY & STAKE
DECIDUOUS SHRUBS				
10	SAS	SEA ASH LEAVED SPIREA	SORBARIA SORBIFOLIA 'SEA'	#5 CONT.
23	BLS	BIRCHLEAF SPIREA	SPIRAEA BETULIFOLIA 'TOR'	#5 CONT.
14	MKL	MISS KIM LILAC	SYRINGA PATULA 'MISS KIM'	#5 CONT.
8	AVJ	AUTUMN JAZZ VIBURNUM	VIBURNUM DENTATUM 'RALPH SENIOR'	#5 CONT.
EVERGREEN SHRUBS				
35	KCJ	KALLA'S COMPACT JUNIPER	JUNIPERUS CHINENSIS 'KALLA'S COMPACT'	#6 CONT.
GRASSES				
50	FTG	FOUNTAIN GRASS	Pennisetum alopecuroides	#2 CONT.
17	KFR	KARL FOERSTER FEATHER REED GRASS	Calamagrostis x acutiflora 'KARL FOERSTER'	#2 CONT.
PERENNIALS				
18	MCF	MAGNUS CONFLOWER	Echinacea purpurea 'MAGNUS'	#1 CONT. PLANT 18" OC.
21	WLC	WALKERS LOW CAMMINT	Nepeta x fassenii 'WALKERS LOW'	#1 CONT. PLANT 24" OC.



NOT FOR CONSTRUCTION

ALL PLANTING TO BE EXCLUDED FROM THIS CONTRACT SEE EXCLUSIONS L-100



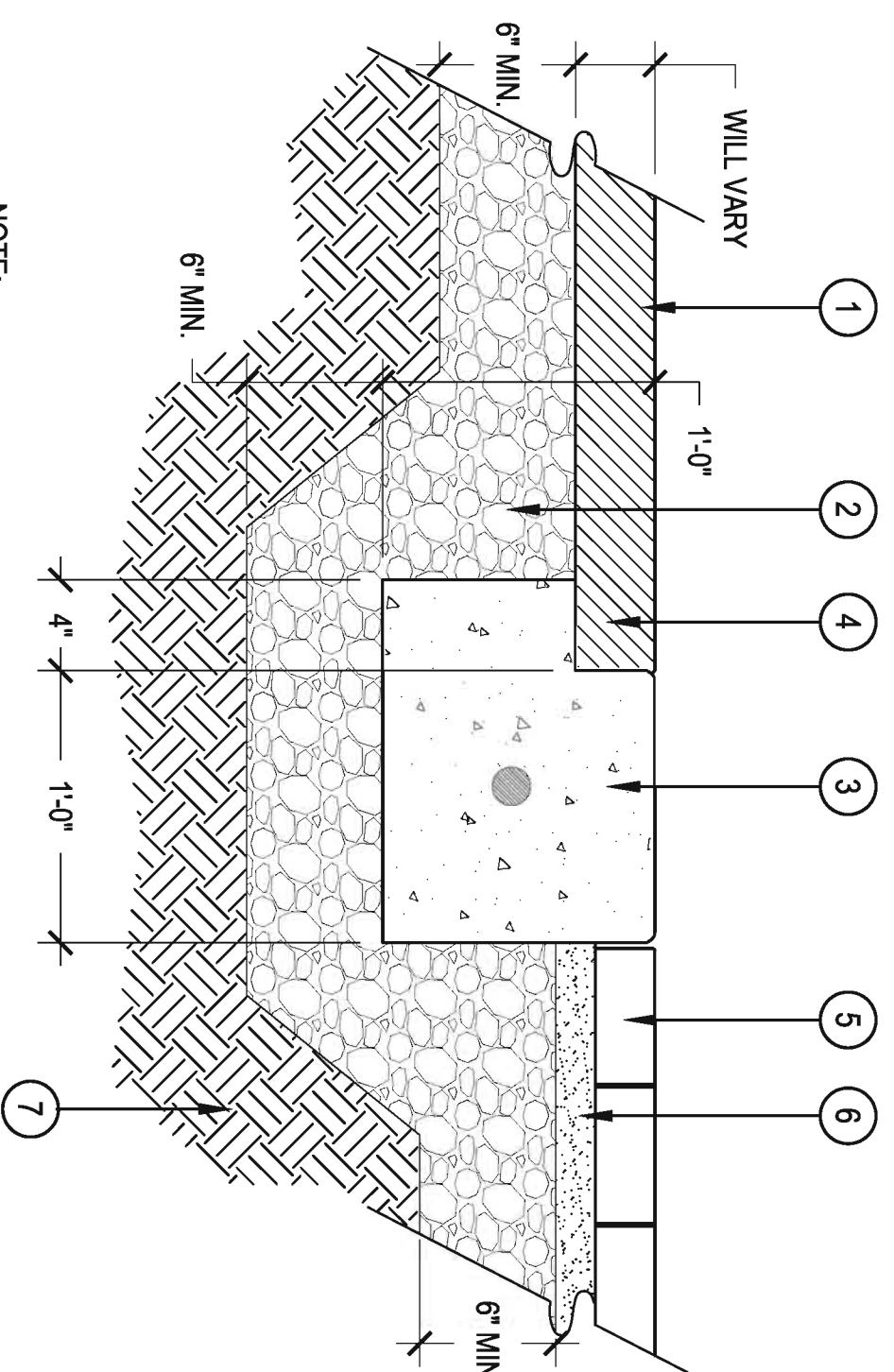
REQUIRED IF WHEELED CONSTRUCTION EQUIPMENT INVOLVED WITHIN 20' OR LESS. 1" BOARDS NOT LESS THAN 5' LONG OR TO REACH FIRST SQUARE-FOLD BRANCH. WIRE TO HOLD BOARDS IN PLACE. NO NAILS PERMITTED. INCLUDE WRAPPING OF BURLAP UNDER BOARDS.

PROTECT LOWER BRANCHES OF TREE CANOPY. PROVIDE CONSTRUCTION FENCING OR EQUAL AT DRIPLINE (MIN).

PLACE SIGNS:
KEEP OUT TREE PROTECTION AREA

EVERY 50' ATTACHED TO FENCING

- TREE PROTECTION NOTES**
1. ALL TREES AND SHRUBS TO BE PROTECTED AND PRESERVED SHALL BE PER DETAIL. GROUPING OF MORE THAN ONE TREE MAY OCCUR.
 2. TREES AND SHRUBS TO BE PROTECTED AND PRESERVED SHALL BE IDENTIFIED ON THE TRUNK WITH WHITE SURVEY TAPE.
 3. TO PREVENT ROOT SMOOTHERING, SOIL STOCKPILES, SUPPLIES, EQUIPMENT OR ANY OTHER MATERIAL SHALL NOT BE PLACED OR STORED WITHIN THE DRIP LINE OR WITHIN 15 FEET OF A TREE OR SHRUB TRUNK, WHICHEVER IS GREATER.
 4. TREE AND SHRUB ROOTS SHALL NOT BE CUT UNLESS CUTTING IS UNAVOIDABLE.
 5. TRENCHESS SHALL BE HAND DUG WITHIN THE DRIP LINE IN AREAS WHERE ROOTS TWO INCHES IN DIAMETER AND GREATER ARE PRESENT OR WHEN IN CLOSE PROXIMITY TO LOW BRANCHING TREES. WHENEVER POSSIBLE, ROOTS TWO INCHES OR GREATER IN DIAMETER SHALL BE TUNNELED OR BORED UNDER AND SHALL BE COVERED TO PREVENT DEHYDRATION.
 6. WHEN ROOT CUTTING IS UNAVOIDABLE, A CLEAN SHARP CUT SHALL BE MADE TO AVOID SHREDDING OR SMASHING. ROOT CUTS SHOULD BE MADE BACK TO A LATERAL ROOT. WHENEVER POSSIBLE, ROOTS SHOULD BE CUT BETWEEN LATE FALL AND BUD OPENING, WHEN ROOT ENERGY SUPPLIES ARE HIGH AND CONDITIONS ARE LEAST FAVORABLE FOR DISEASE CAUSING AGENTS. EXPOSED ROOTS SHALL BE COVERED IMMEDIATELY TO PREVENT DEHYDRATION.
 7. WATERING OF PROTECTED TREES IN WHICH ROOTS WERE CUT SHALL BE PROVIDED BY THE CONTRACTOR.
 8. AUGER TUNNELING RATHER THAN TRENCHING SHOULD BE USED FOR UTILITY PLACEMENT WITHIN DRIP LINE.
 9. FENCING MATERIAL SHALL ENCLOSE ANY TREE OR SHRUB WHOSE OUTER DRIP LINE EDGE IS WITHIN 20 FEET OF ANY CONSTRUCTION ACTIVITIES.
 10. FENCING MATERIAL SHALL BE BRIGHT, CONTRASTING COLOR, DURABLE, AND A MINIMUM OF FOUR FEET IN HEIGHT.
 11. FENCING MATERIAL SHALL BE SET AT THE DRIPLINE OR 15 FEET FROM TREE TRUNK, WHICHEVER IS GREATER AND MAINTAINED IN AN UPRIGHT POSITION THROUGHOUT THE DURATION OF CONSTRUCTION ACTIVITIES.
 12. ANY GRADE CHANGES (SUCH AS THE REMOVAL OF TOPSOIL OR ADDITION OF FILL MATERIAL) WITHIN THE DRIP LINE SHOULD BE AVOIDED FOR EXISTING TREES TO REMAIN, RETAINING WALLS AND TREE WELLS ARE ACCEPTABLE ONLY WHEN CONSTRUCTED PRIOR TO GRADE CHANGE.
 13. REFER TO PLANS FOR FENCE STAKING LOCATIONS.

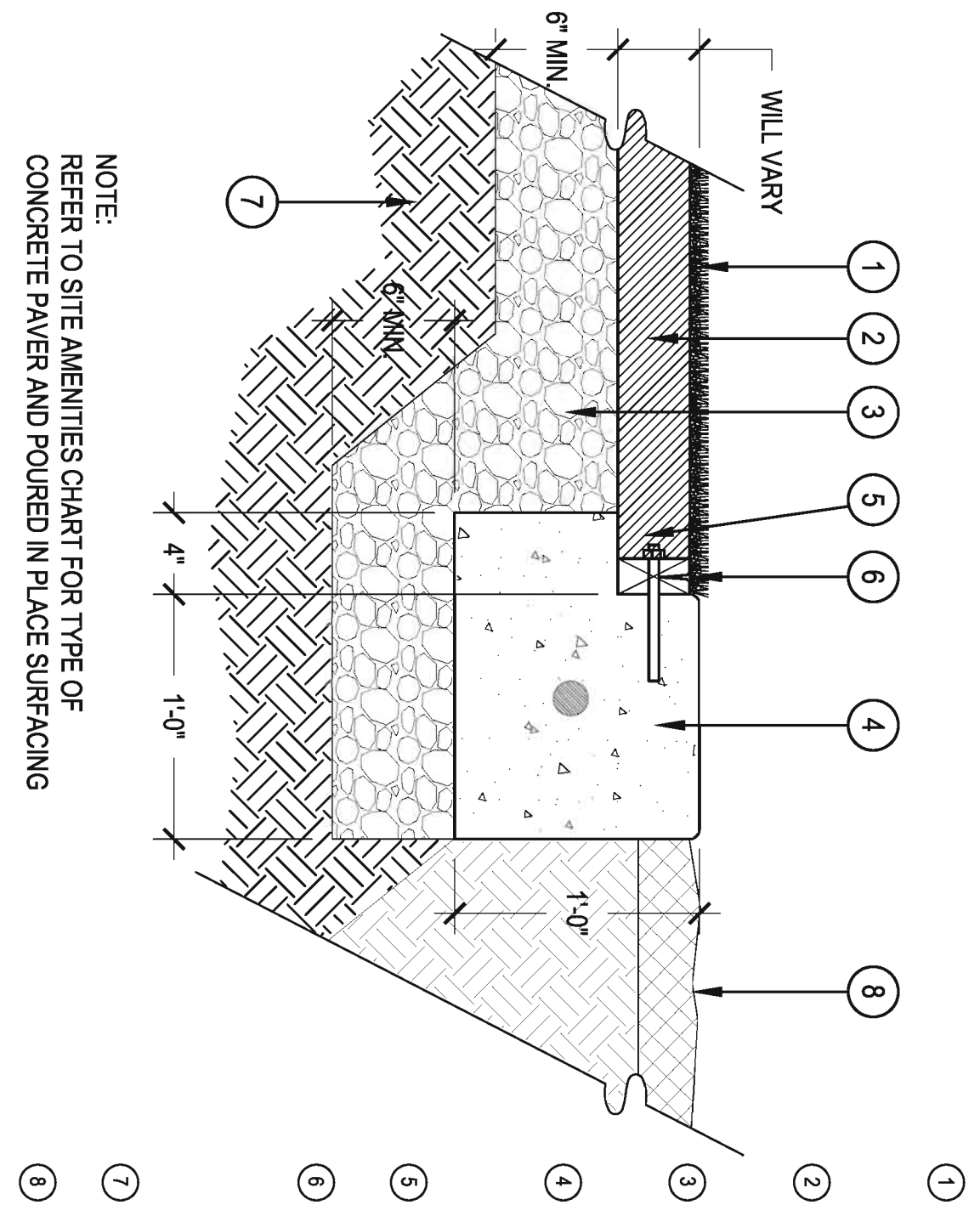


POURED IN PLACE SURFACING - DEPTH WILL VARY. CONTRACTOR SHALL COORDINATE W/ PLAYGROUND MANUFACTURER AND POURED IN PLACE PROVIDER TO SET DEPTHS

NOTE: REFER TO SITE AMENITIES CHART FOR TYPE OF CONCRETE PAVEMENT AND POURED IN PLACE SURFACING

2 CONCRETE APRON, POURED IN PLACE, CONCRETE PAVERS

SCALE: 1:1/2" = 1'-0"

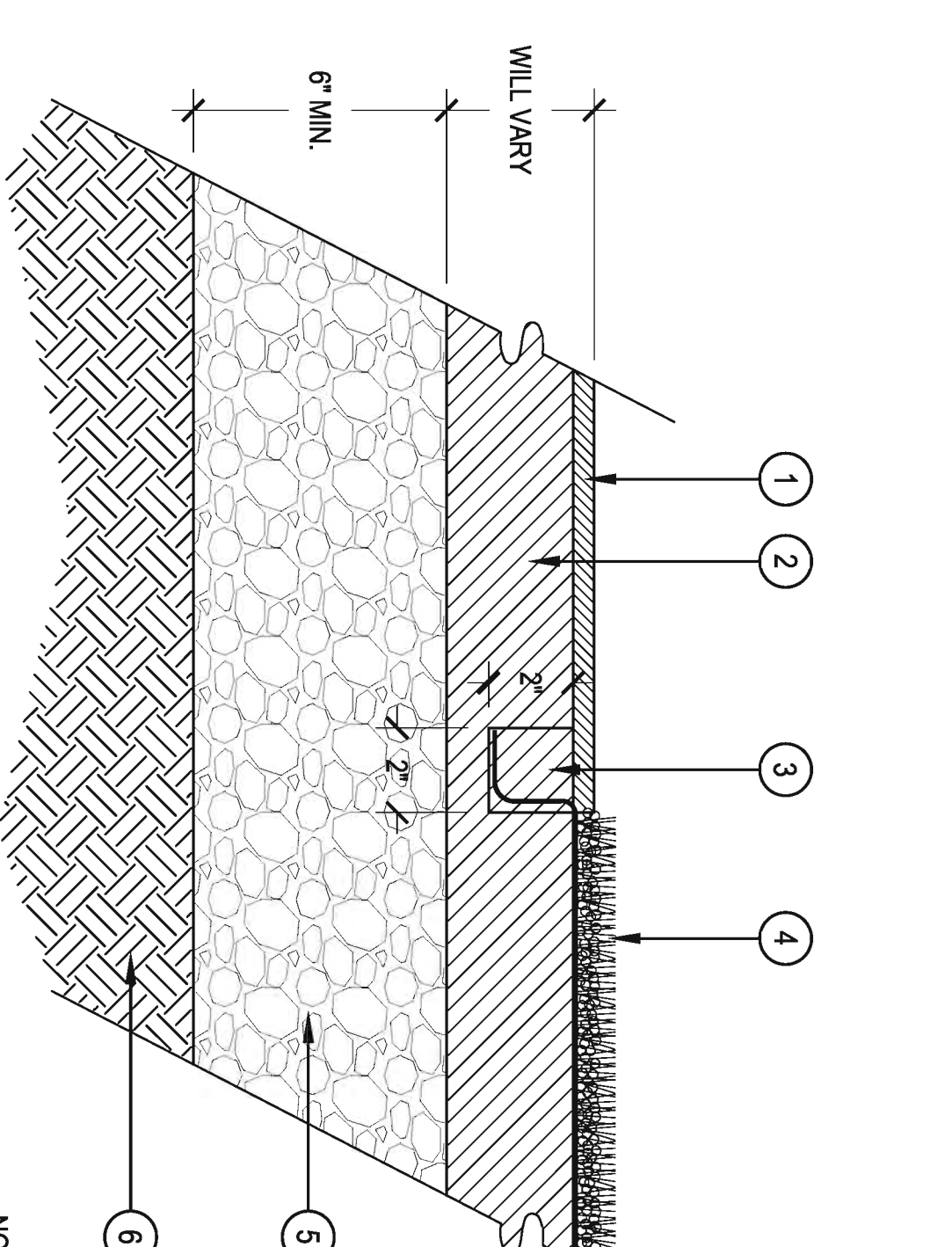


POURED IN PLACE SURFACING - DEPTH WILL VARY. CONTRACTOR SHALL COORDINATE W/ PLAYGROUND MANUFACTURER AND POURED IN PLACE PROVIDER TO SET DEPTHS

NOTE: REFER TO SITE AMENITIES CHART FOR TYPE OF CONCRETE PAVEMENT AND POURED IN PLACE SURFACING

5 TURF & CONNECTION TO CONCRETE APRON

SCALE: 1:1/2" = 1'-0"



POURED IN PLACE SURFACING - DEPTH WILL VARY. CONTRACTOR SHALL COORDINATE W/ PLAYGROUND MANUFACTURER AND POURED IN PLACE PROVIDER TO SET DEPTHS

NOTE: REFER TO SITE AMENITIES CHART FOR TYPE OF TURF AND POURED IN PLACE SURFACING

8 POURED IN PLACE TO TURF TRANSITION

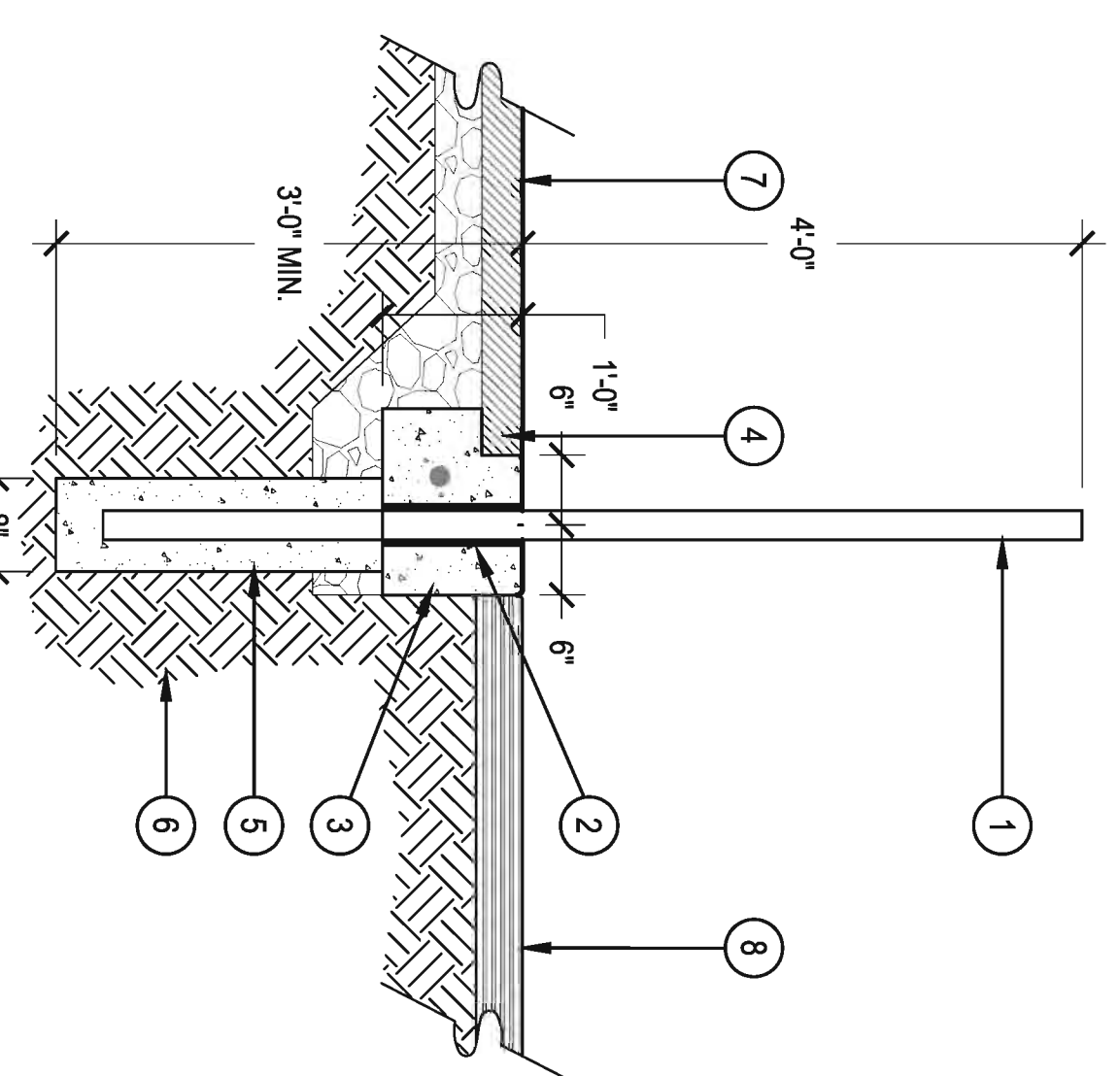
SCALE: 3" = 1'-0"



POURED IN PLACE SURFACING - DEPTH WILL VARY. CONTRACTOR SHALL COORDINATE W/ PLAYGROUND MANUFACTURER AND POURED IN PLACE PROVIDER TO SET DEPTHS

NOTE: REFER TO SITE AMENITIES CHART FOR TYPE OF TURF AND POURED IN PLACE SURFACING

1 TREE PROTECTION



PLAYGROUND FENCE, SEE SITE AMENITIES CHART ON SHEET L-1

1/2" SEALED EXPANSION JOINT MATERIAL

CONCRETE APRON, SEE DETAIL

ZILOB, ADJUST LOCATION OF REBAR TO ALLOW FOR FENCE KEY IN APRON TO RECEIVE PLAYGROUND TURF OR POURED IN PLACE. KEY IS NOT NEEDED WHEN APRON IS NOT ADJACENT TO PLAYGROUND TURF OR POURED IN PLACE. APRON SHALL BE 12" WIDE

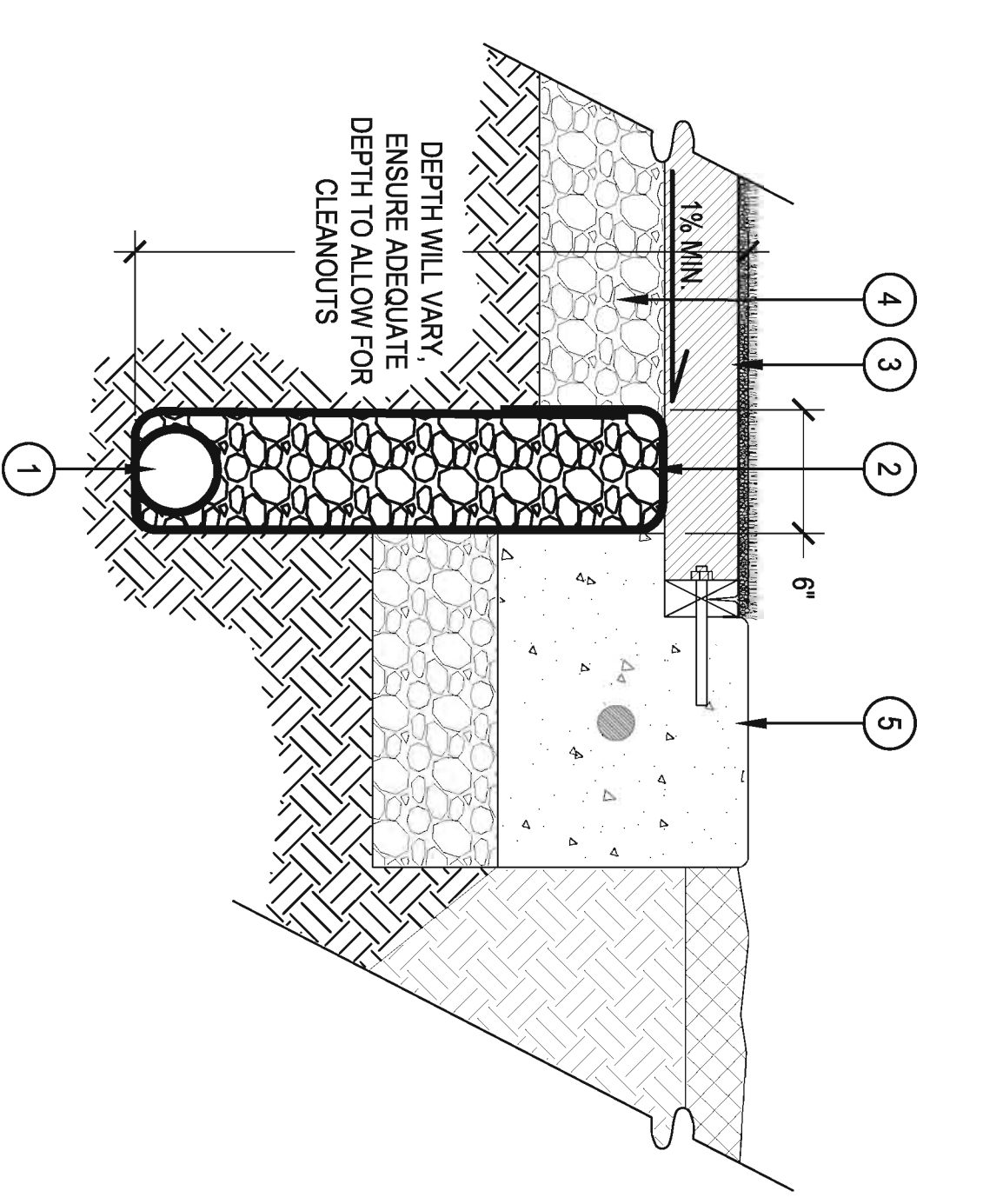
CONCRETE FOOTER, HOLD 1/2" LOW TO ALLOW FOR CONCRETE EDGE

COMPACTED SUB-GRADE PER GEOTECHNICAL REPORT RECOMMENDATIONS

POURED IN PLACE SURFACING OR PLAYGROUND TURF EXISTING ASPHALT WALK OR CONCRETE, SAW CUT OUT SMOOTH EDGE TO ALLOW FOR CONCRETE APRON

3 PLAYGROUND FENCE @ CONCRETE APRON

SCALE: 3/4" = 1'-0"



4" DIA. PERFORATED PVC DRAIN PIPE, WRAP ENTIRE PIPE WITH MIRIFI 140N FILTER FABRIC, SLOPE PIPE AT 1% MIN. CONNECT TO STORM SYSTEM.

CA-7 DRAIN ROCK, WRAP ENTIRE TRENCH W/ MIRIFI 140N FILTER FABRIC

PLAYGROUND SURFACING

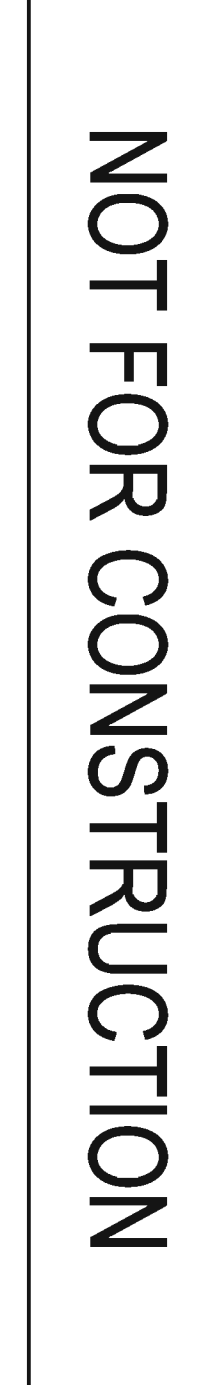
CA-6 COMPACTED AGGREGATE BASE COURSE, TOP OF BASE COURSE SHALL SLOPE AT 1% MIN. TO DRAIN

ADJACENT CONCRETE APRON

DEPTH WILL VARY, ENSURE ADEQUATE DEPTH TO ALLOW FOR CLEANOUTS

6 PLAYGROUND DRAIN

SCALE: 1:1/2" = 1'-0"



4" DIA. PERFORATED PVC DRAIN PIPE, WRAP ENTIRE PIPE WITH MIRIFI 140N FILTER FABRIC, SLOPE PIPE AT 1% MIN. CONNECT TO STORM SYSTEM.

CA-7 DRAIN ROCK, WRAP ENTIRE TRENCH W/ MIRIFI 140N FILTER FABRIC

PLAYGROUND SURFACING

CA-6 COMPACTED AGGREGATE BASE COURSE, TOP OF BASE COURSE SHALL SLOPE AT 1% MIN. TO DRAIN

ADJACENT CONCRETE APRON

DEPTH WILL VARY, ENSURE ADEQUATE DEPTH TO ALLOW FOR CLEANOUTS

NOT FOR CONSTRUCTION

7 PLAYGROUND DRAIN CLEANOUT

N.T.S.



POURED IN PLACE SURFACING

CA-7 DRAIN ROCK, WRAP ENTIRE TRENCH W/ MIRIFI 140N FILTER FABRIC

4" DIA. PERFORATED PVC DRAIN PIPE, WRAP ENTIRE PIPE IN MIRIFI 140N FILTER FABRIC

10" DIA. ROUND IRRIGATION BOX, SET LID FLUSH W/ AGGREGATE BASE. GLUE POURED IN PLACE SURFACING ONTO CAP - CREATE HOLES IN POURED IN PLACE TO ALLOW FOR ACCESS TO OPENING DEVICES ON LID

THREADED WATER TIGHT CAP

4" PVC ELBOW

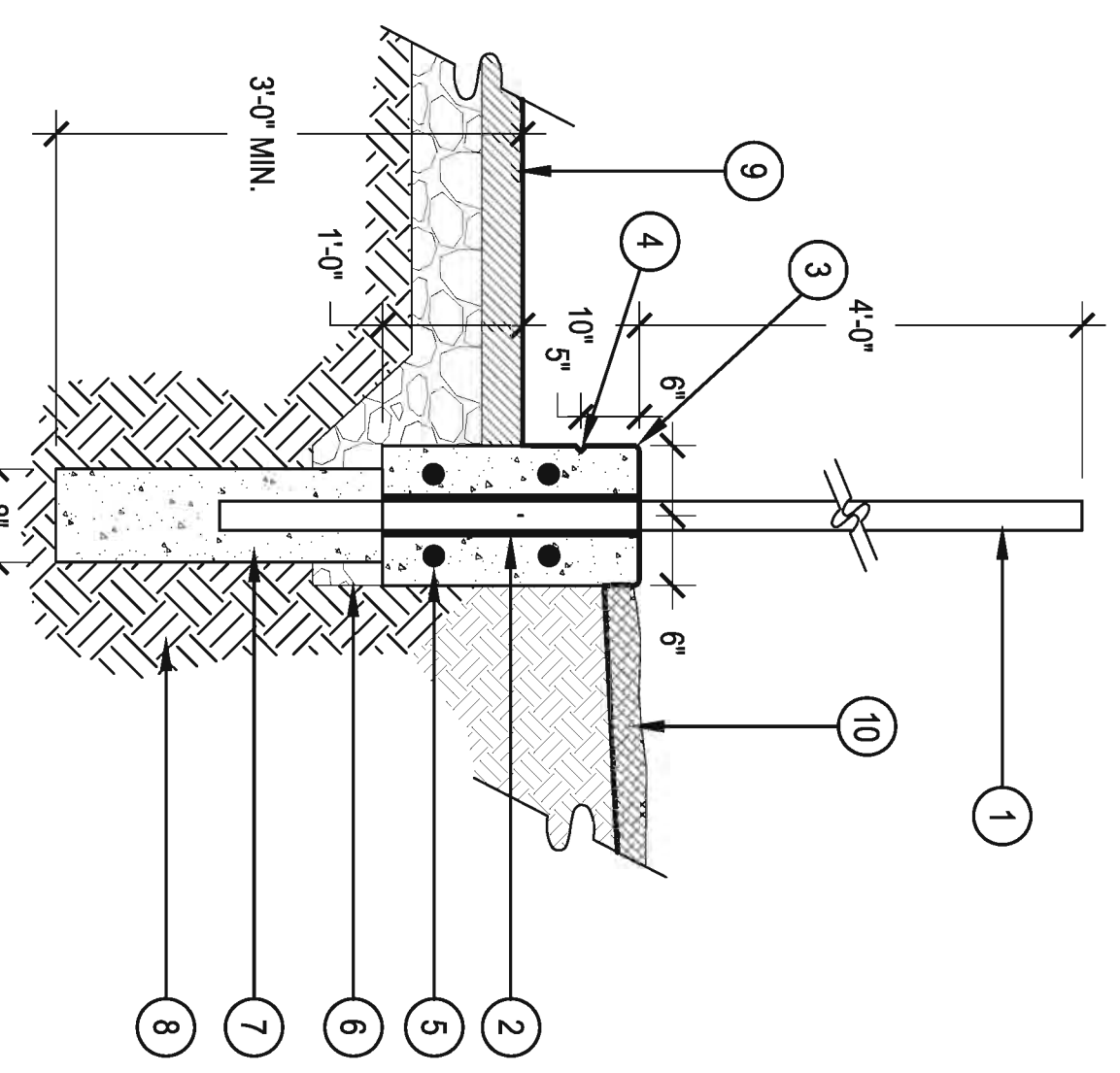
6" - 45 DEGREE PVC WYE FITTING

COMPACTED SUBGRADE

NOTE: CONFIRM FINAL GRADES PRIOR TO INSTALLING

4 CONCRETE CURB W/ FENCE

SCALE: 3/4" = 1'-0"



PLAYGROUND FENCE, SEE SITE AMENITIES CHART ON SHEET L-1

1/2" SEALED EXPANSION JOINT MATERIAL

PLAYGROUND CONCRETE 10" CURB, PROVIDE 1/8" WIDE SAW CUT SCORE JOINTS 4' O.C., CENTERED ON FENCE POST. 1/8" RADIUS ON ALL EXPOSED EDGES

1/2" CHAMFERED REVEAL AROUND ALL EXPOSED SIDES OF THE CURB

(4) #4 REBAR CONTINUOUS

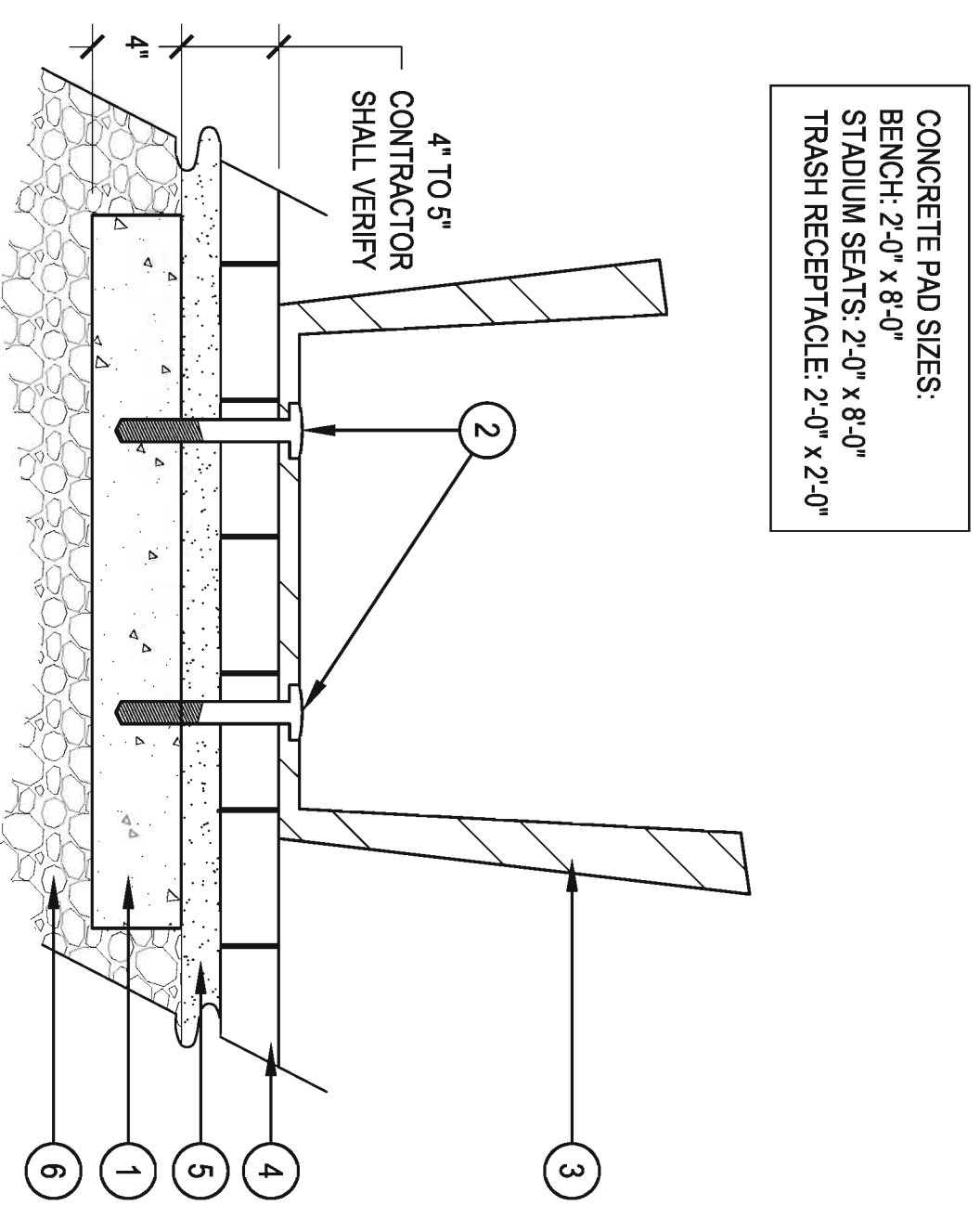
6" DEPTH COMPACTED CA-6 AGGREGATE UNDER CURB

CONCRETE FOOTER, HOLD 1/2" LOW TO ALLOW FOR CONCRETE EDGE

COMPACTED SUBGRADE

POURED IN PLACE SURFACING, SEE DETAIL ZILOB

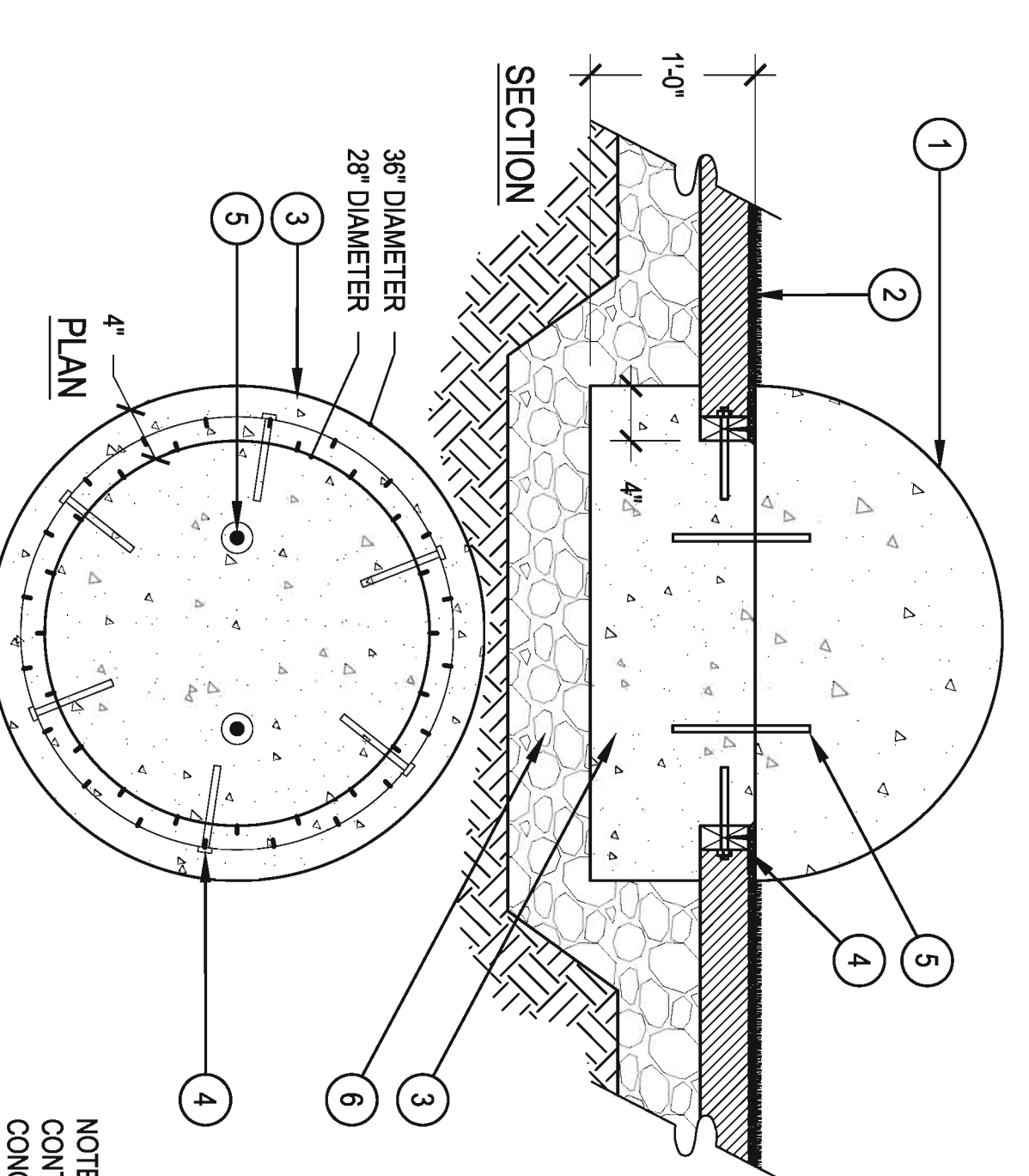
LANDSCAPE BED



CONCRETE PAD SIZES:
BENCH: 2'-0" x 8'-0"
STADIUM SEATS: 2'-0" x 8'-0"
TRASH RECEPTACLE: 2'-0" x 2'-0"

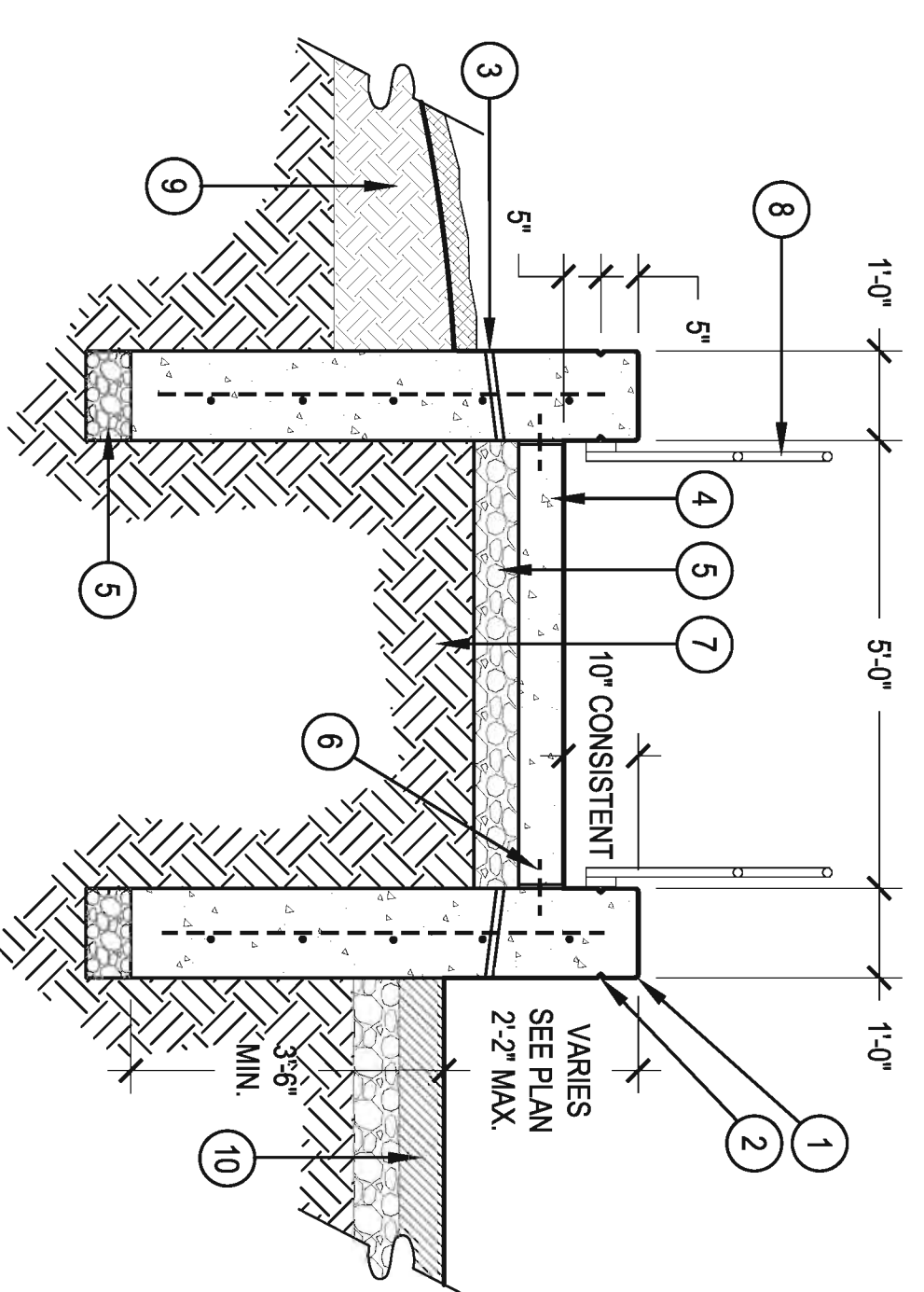
- 4" THICK CONCRETE PAD, SET FLUSH WITH TOP OF COMPACTED AGGREGATE SUB-GRADE.
- CONTRACTOR SHALL CONTACT OWNERS REP. FOR APPROVAL OF SITE AMENITY LOCATIONS PRIOR TO PLACEMENT
 - EXTEND 3/4" INTO CONCRETE PAD. INSTALL PER MANUFACTURERS SPECIFICATIONS
 - SITE AMENITY - REFER TO MANUFACTURERS SPECIFICATIONS FOR ANCHOR BOLT/HOLE LOCATIONS. SITE AMENITY SHALL BE CENTERED ON CONCRETE PAD
 - PAVERS
 - SAND SETTING BED
 - CA-6 AGGREGATE

1 SITE AMENITY - SURFACE MOUNT IN PAVERS
SCALE: 1-1/2" = 1'-0"



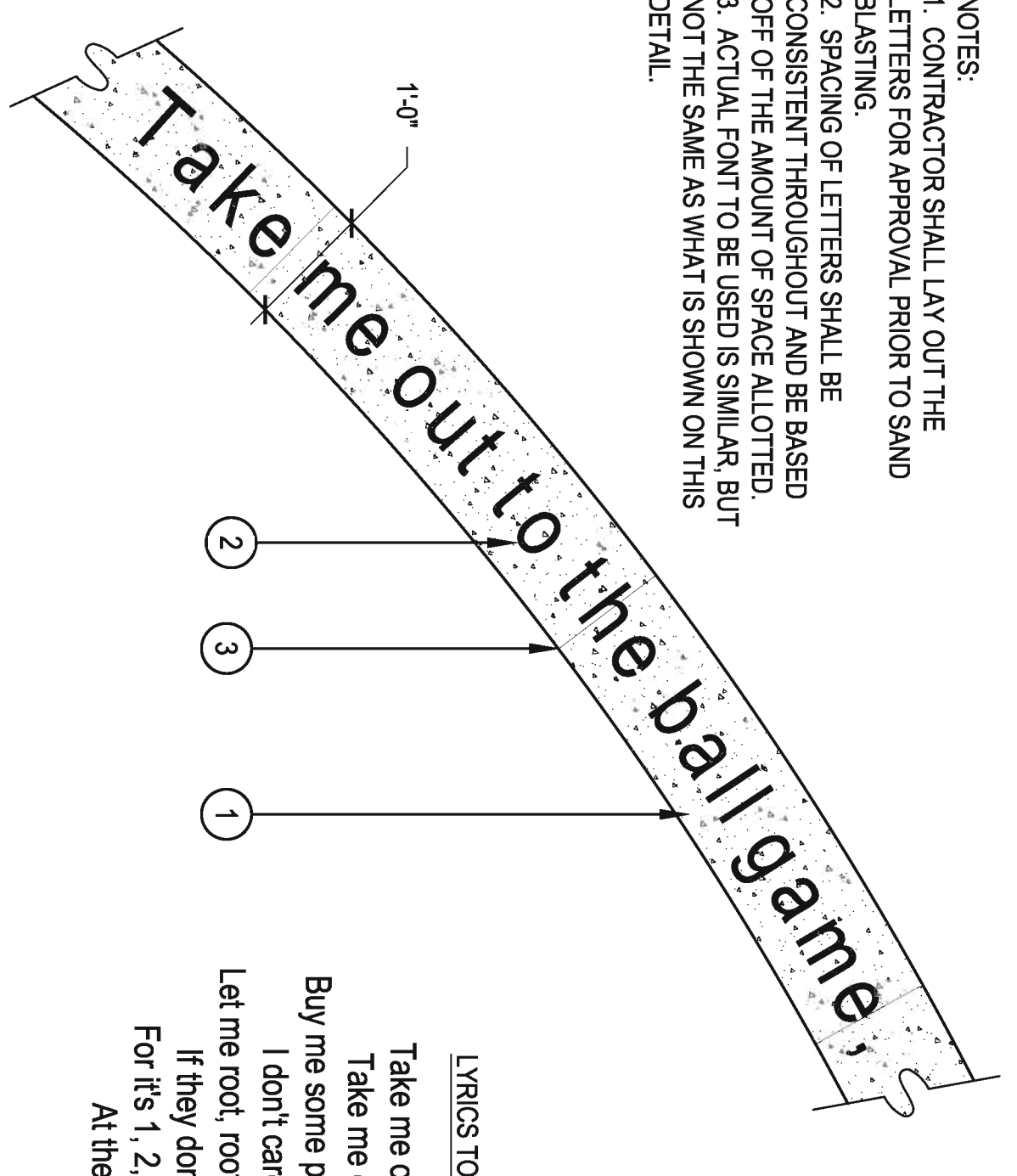
- 1/2" CONCRETE BASEBALL - 36" AMENITY CHART
- CONCRETE FOUNDATION, COORDINATE DEPTH OF KEY W/ PLAYGROUND TURF REPRESENTATIVE TO ENSURE ADEQUATE DEPTH
 - 2x4 TREX TO RUN LENGTH OF KEY ON FOUNDATION. BOLT INTO CONCRETE AS NEEDED. (BOLTS SHALL BE GALVANIZED). CUT SLITS IN TREX AS NEEDED IN ORDER TO ACHIEVE RADIUS. MAIL TURF INTO TREX PER MANUFACTURERS SPECIFICATIONS
 - EPOXY COATED REBAR DOWELS - 2 MIN. TO SECURE 1/2" BASEBALL TO FOUNDATION
 - 6" DEPTH COMPACTED CA-6 AGGREGATE
- NOTE:
CONTRACTOR SHALL ENSURE THAT THE 1/2" CONCRETE BASEBALL RESTS FIRMLY ON THE PLAYGROUND TURF WITH NO GAPS.

4 CONCRETE BASEBALL FOUNDATION
SCALE: 1" = 1'-0"



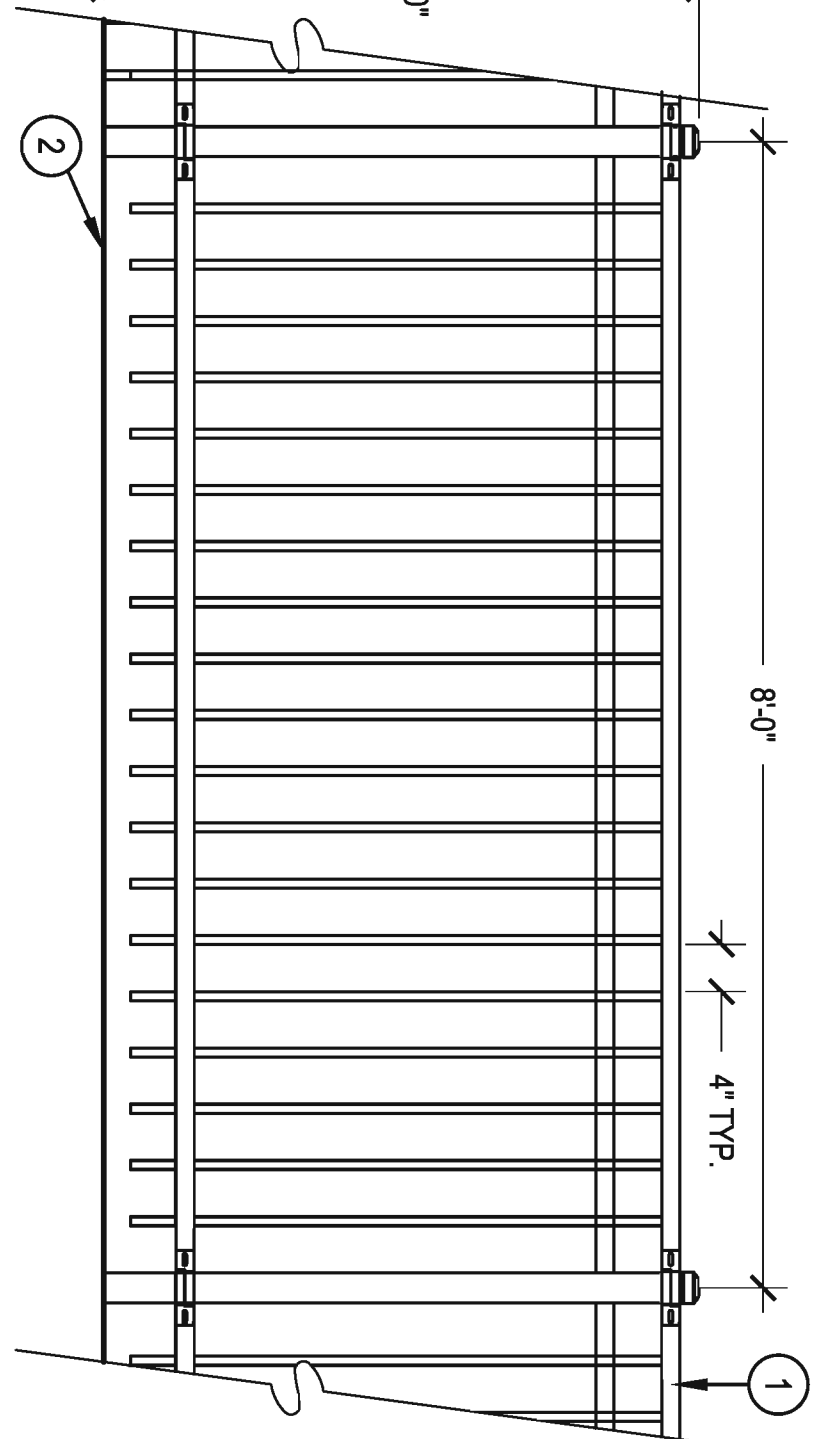
- CONCRETE WALL, TOP OF WALL SHALL SLOPE W/ RAMP. ALL EXPOSED EDGES SHALL HAVE A 1/2" RADIUS. #4 REBAR 12" O.C. EACH WAY.
- 1/2" CHAMFERED REVEAL AROUND ALL SIDES OF THE WALL
 - 1" DIA. WEEP HOLES 30" O.C., COVER UPPER PORTION W/ FILTER FABRIC
 - 4" THICK CONCRETE FLATWORK, ADJACENT TO WALL
 - CALLUSUAL EXPANSION JOINT
 - 6" DEPTH COMPACTED CA-6 AGGREGATE TYP.
 - #4 REBAR DOWELS 24" O.C.
 - COMPACTED SUB-GRADE PER GEOTECHNICAL REPORT
 - RAILING, SEE DETAIL XXX
 - ADJACENT PLANTING BED
 - ADJACENT POURED IN PLACE SURFACING

2 CONCRETE RAMP W/ CONCRETE WALLS
SCALE: 1/2" = 1'-0"



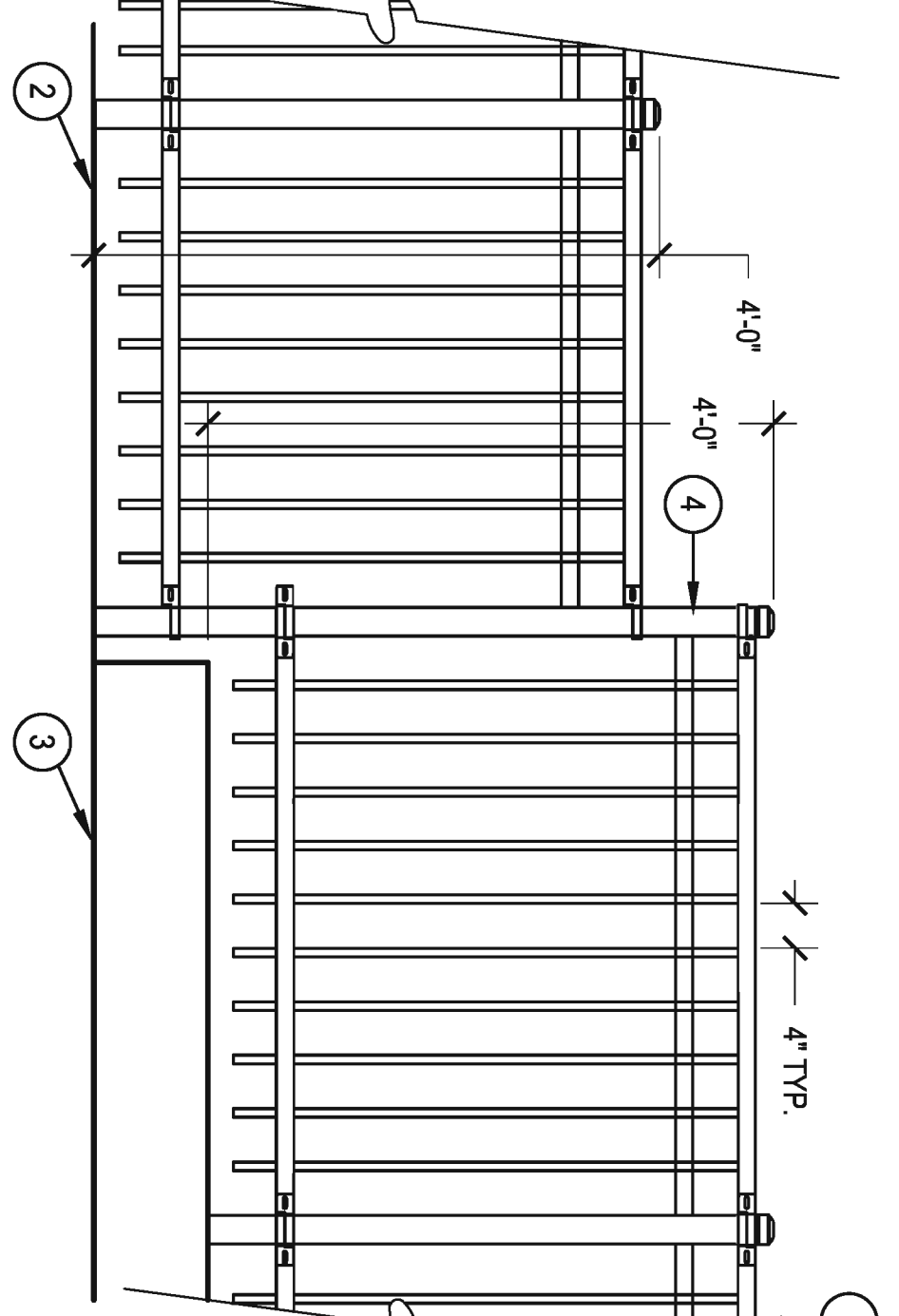
- NOTES:
1. CONTRACTOR SHALL LAY OUT THE LETTERS FOR APPROVAL PRIOR TO SAND BLASTING.
2. SPACING OF LETTERS SHALL BE CONSISTENT THROUGHOUT AND BE BASED OFF OF THE AMOUNT OF SPACE ALLOTTED.
3. ACTUAL FONT TO BE USED IS SIMILAR, BUT NOT THE SAME AS WHAT IS SHOWN ON THIS DETAIL.
- CONCRETE PLAYGROUND EDGE OR CURB
 - LYRICS TO TAKE ME OUT TO THE BALL GAME TO BE SAND BLASTED 1/8" INTO CONCRETE AND PAINTED BLACK. 6" TALL ITICKABEL LT. MEDIUM FONT. CONTACT NORRIS DESIGN FOR FONT. SEE PLAN FOR LOCATIONS
 - SAW CUT SCORE JOINT 4" O.C. TYP.

5 SANDBLASTED LETTERING
SCALE: 3/4" = 1'-0"



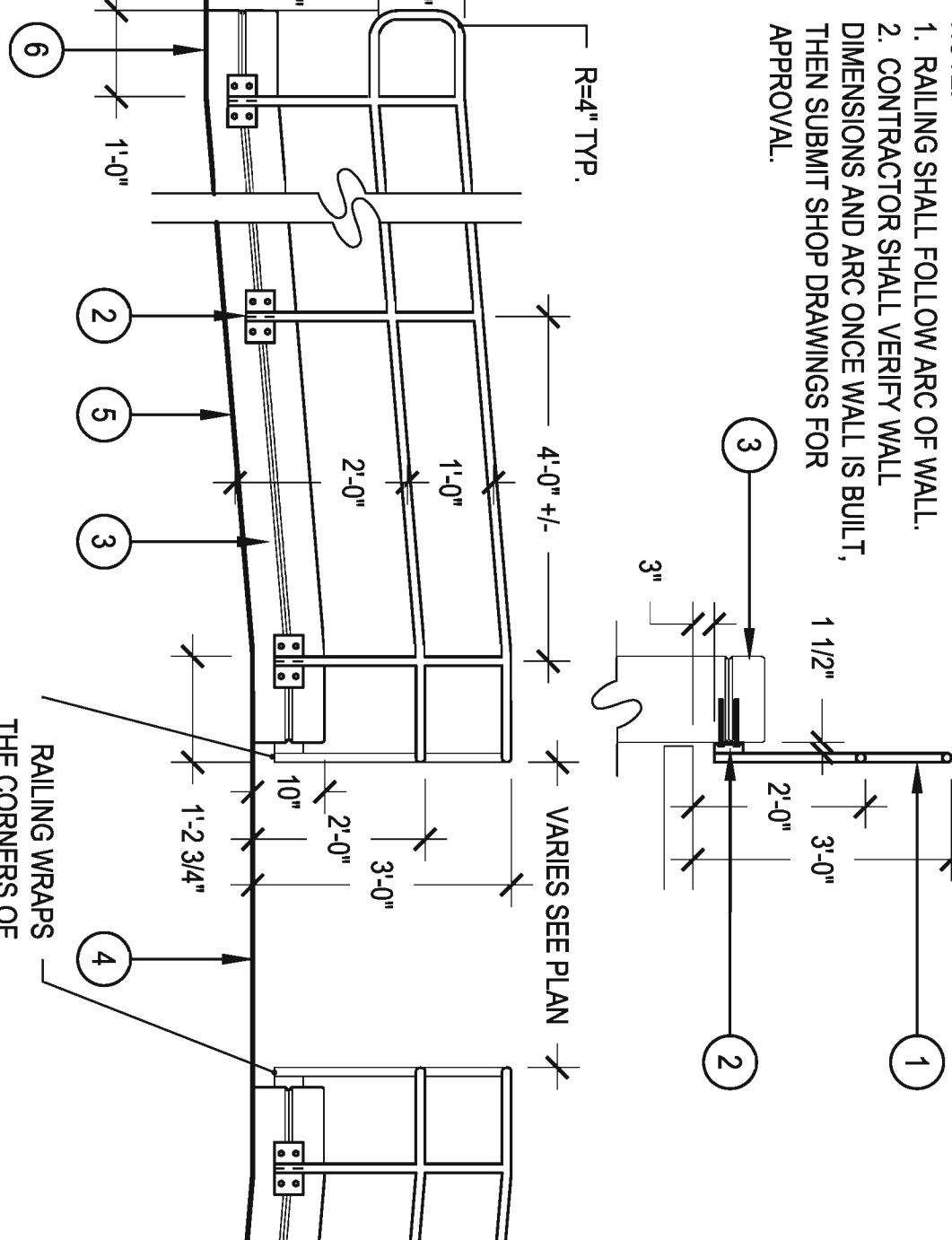
- FENCE
 - FINISH GRADE
- NOTE:
1. REFER TO SITE AMENITIES SCHEDULE FOR MORE INFORMATION.
2. SET FENCE POST FOOTERS LOW TO ALLOW FOR CONCRETE APRON AND 10" CURB

7 PLAYGROUND FENCE
SCALE: 3/4" = 1'-0"



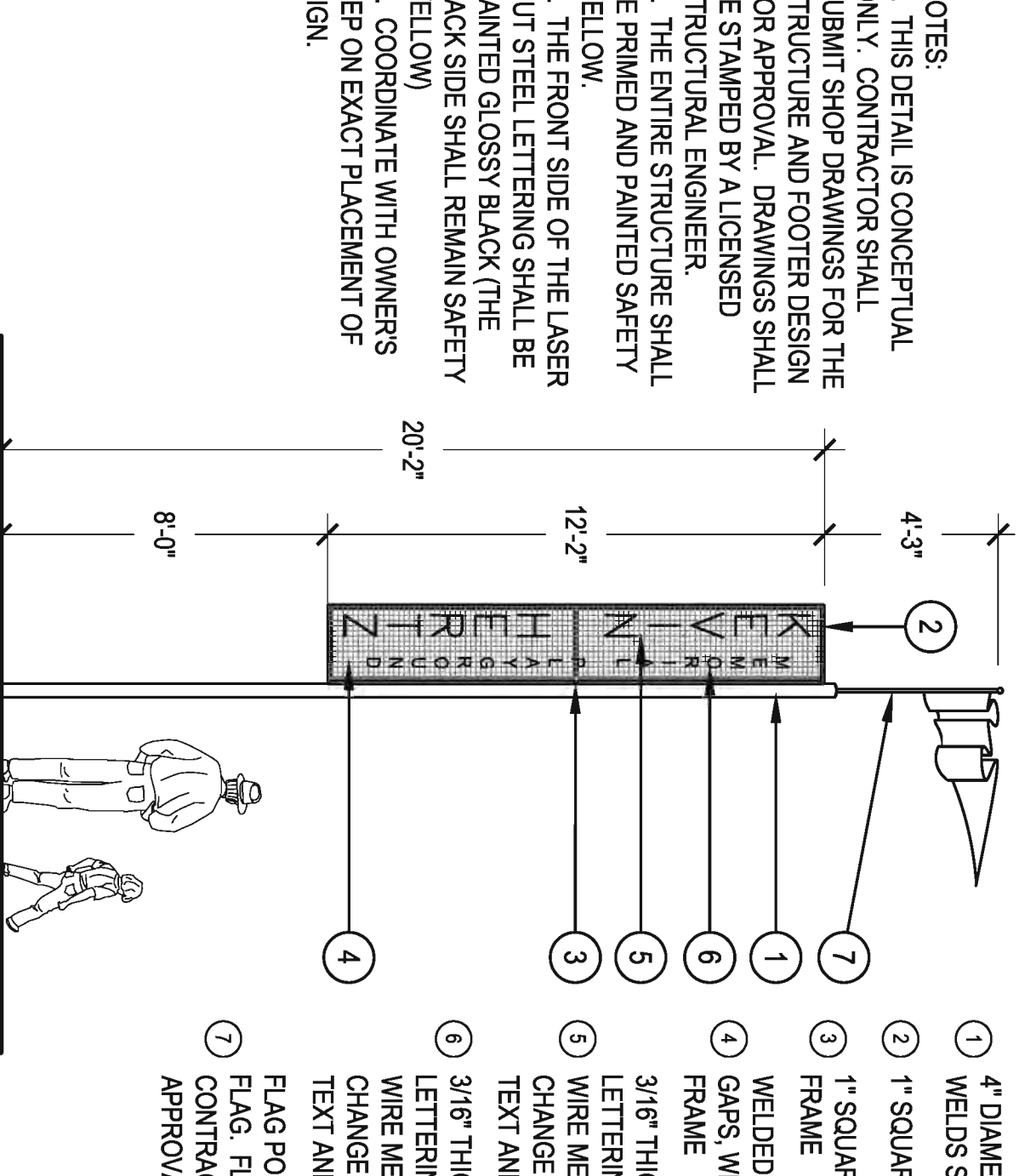
- FENCE
 - FINISH GRADE
 - 10" LANDSCAPE CURB
 - 4-1/4" POST SET NEAR EDGE OF THE LANDSCAPE CURB. STEP FENCE DOWN AT END OF LANDSCAPE CURB
- NOTE:
1. REFER TO SITE AMENITIES SCHEDULE FOR MORE INFORMATION.
2. SET FENCE POST FOOTERS LOW TO ALLOW FOR CONCRETE APRON AND 10" CURB

8 PLAYGROUND FENCE TRANSITION
SCALE: 3/4" = 1'-0"



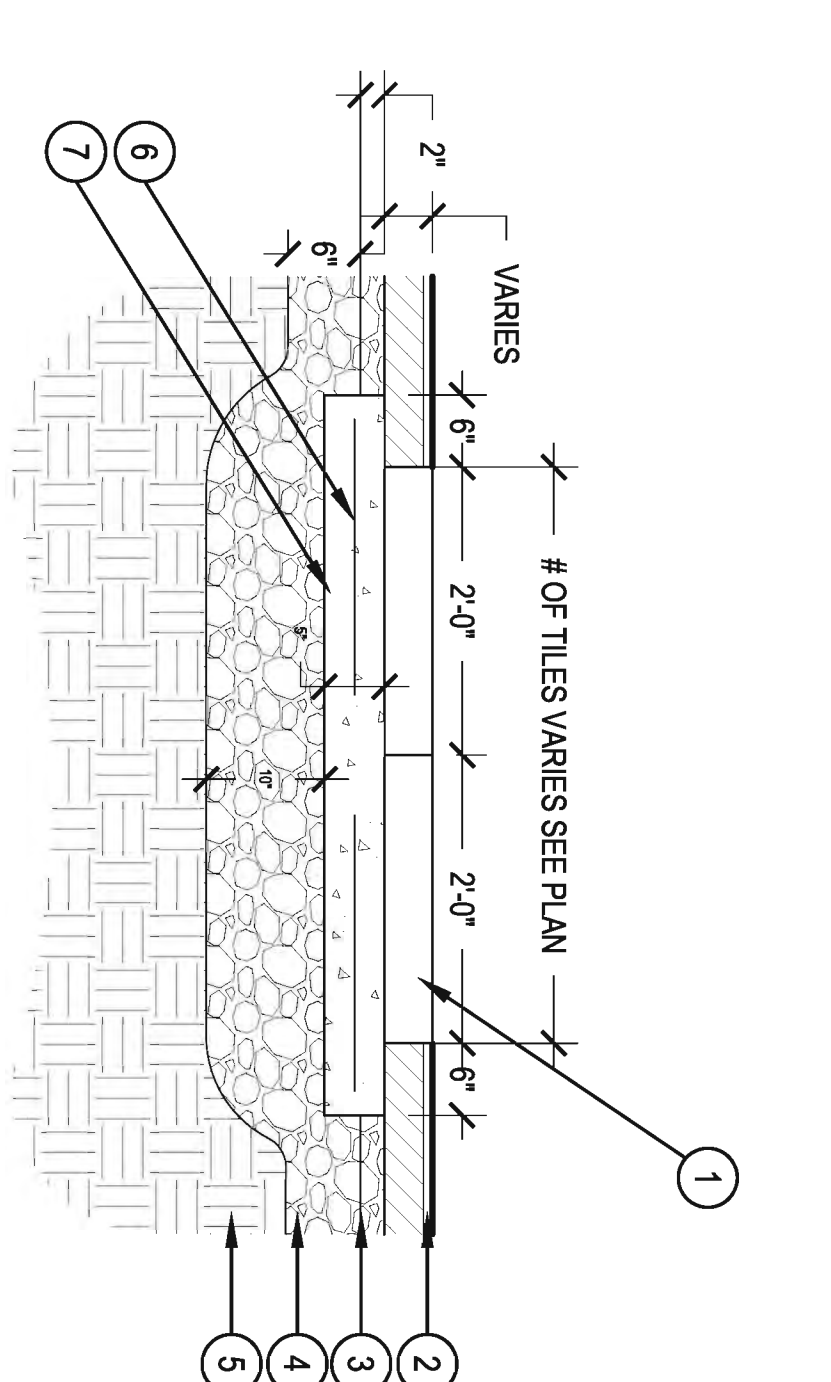
- NOTE:
1. RAILING SHALL FOLLOW ARC OF WALL.
2. CONTRACTOR SHALL VERIFY WALL DIMENSIONS AND ARC ONCE WALL IS BUILT. THEN SUBMIT SHOP DRAWINGS FOR APPROVAL.
- 1 1/4" DIAMETER SCHEDULE 40 PIPE RAILING, GRIND WELDS SMOOTH, PRIME AND PAINTED, COLOR: T.B.D.
 - FASTEN RAILING TO WALL W/ 3/16" STEEL PLATES AND CONCRETE LAG BOLTS - CONTRACTOR SHALL SUBMIT SHOP DRAWINGS FOR APPROVAL
 - CONCRETE WALL
 - UPPER RAMP LANDING
 - RAMP
 - LOWER RAMP LANDING
 - RAILING WRAPS THE CORNERS OF THE WALLS

3 RAMP RAILING
SCALE: 1/2" = 1'-0"



- NOTES:
1. THIS DETAIL IS CONCEPTUAL ONLY. CONTRACTOR SHALL SUBMIT SHOP DRAWINGS FOR THE STRUCTURE AND FOOTER DESIGN FOR APPROVAL. DRAWINGS SHALL BE STAMPED BY A LICENSED STRUCTURAL ENGINEER
- THE ENTIRE STRUCTURE SHALL BE PRIMED AND PAINTED SAFETY YELLOW.
 - THE FRONT SIDE OF THE LASER CUT STEEL LETTERING SHALL BE PAINTED GLOSSY BLACK (THE BACK SIDE SHALL REMAIN SAFETY YELLOW)
 - COORDINATE WITH OWNERS REP ON EXACT PLACEMENT OF SIGN.
 - 4" DIAMETER STEEL POLE, CAP TOP, GRIND WELDS SMOOTH
 - 1" SQUARE TUBE STEEL FRAME
 - 1" SQUARE TUBE STEEL BRACE IN CENTER OF FRAME
 - WELDED WIRE MESH W/ APPROX. 1-1/2" x 1-1/2" GAPS, WELD TO FRONT FACE OF TUBE STEEL FRAME
 - 3/16" THICK, 8" TALL LASER CUT STEEL LETTERING, WELD TO FRONT SIDE OF WELDED WIRE MESH. TEXT AND FONT ARE SUBJECT TO CHANGE. CONTACT OWNERS REP. FOR FINAL TEXT AND FONT.
 - 3/16" THICK, 4" TALL LASER CUT STEEL LETTERING, WELD TO FRONT SIDE OF WELDED WIRE MESH. TEXT AND FONT ARE SUBJECT TO CHANGE. CONTACT OWNERS REP. FOR FINAL TEXT AND FONT.
 - FLAG POLE ASSEMBLY TO ALLOW FOR SMALL FLAG. FLAG MUST BE EASILY REMOVABLE. CONTRACTOR SHALL SUBMIT CUT SHEETS FOR APPROVAL.

6 FOUL POLE SIGN
SCALE: 1/4" = 1'-0"



- SOFT SURFACE TILES, MEET ASTM F-1292 FOR CRITICAL FALL HT. SEE PLAN FOR # OF TILES
- POURED IN PLACE RUBBER SURFACE
 - MC COOK 210 BY VULCAN
 - COMPACTED CA-6 AGGREGATE
 - COMPACTED OR UNDISTURBED SUBGRADE
 - WMM 6X6 W2 9XW2 9 2" MIN. CLEAR
 - CONCRETE BASE

9 SAFETY TILES
SCALE: 3/4" = 1'-0"

NOT FOR CONSTRUCTION