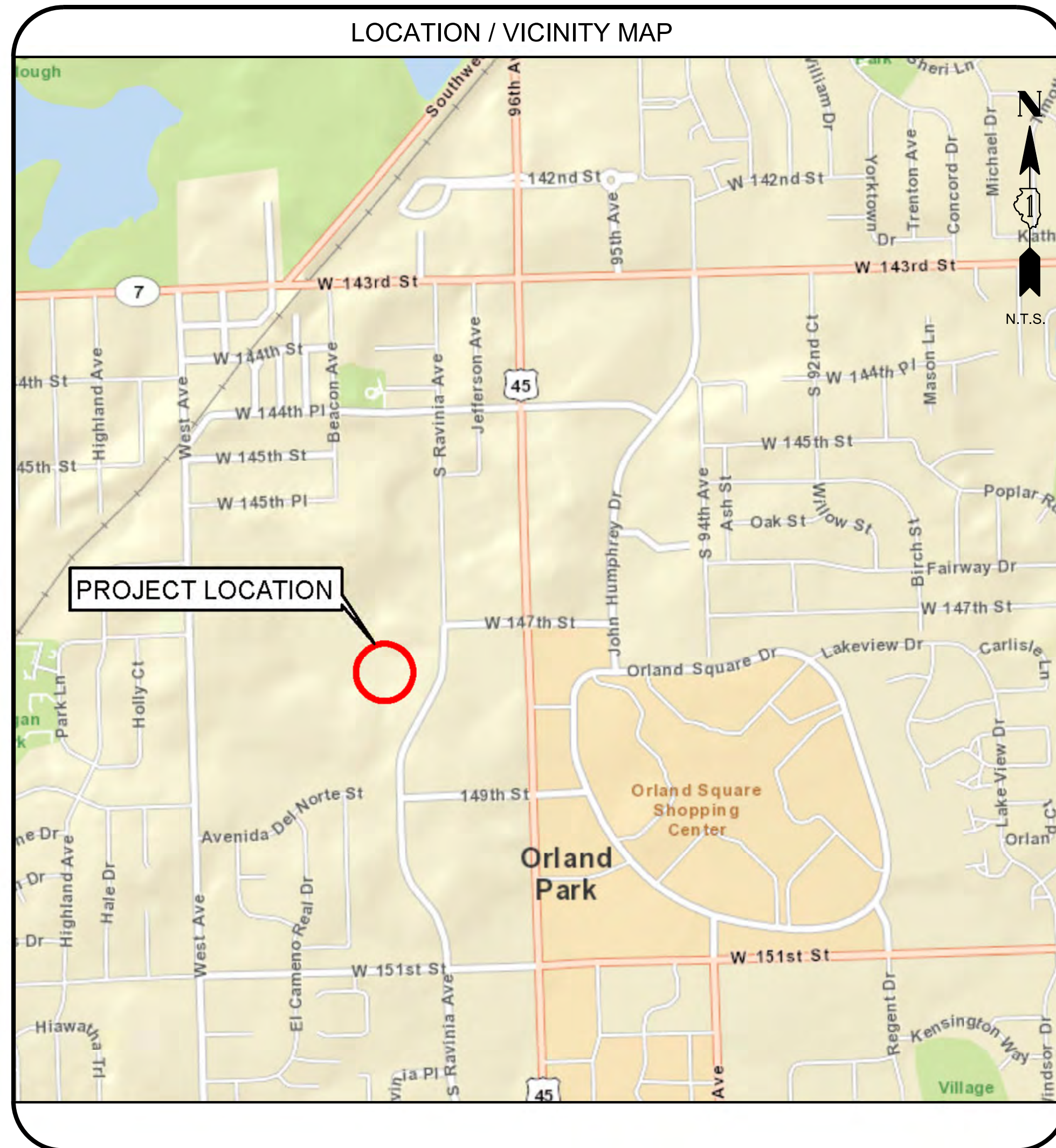


# CIVIC CENTER PARKING LOT DRAINAGE IMPROVEMENT



### GENERAL NOTES

**SPECIFICATIONS, STANDARDS, AND SPECIAL PROVISIONS**

- ALL REFERENCES TO STANDARD SPECIFICATIONS IN THESE GENERAL NOTES SHALL BE INTERPRETED TO MEAN THE "STANDARD SPECIFICATIONS FOR ROAD AND BRIDGE CONSTRUCTION" ADOPTED BY THE ILLINOIS DEPARTMENT OF TRANSPORTATION, JANUARY 1, 2012 AND THE "SUPPLEMENTAL SPECIFICATIONS AND RECURRING SPECIAL PROVISIONS", ADOPTED JANUARY 1, 2012.
- ALL CONSTRUCTION SHALL BE IN ACCORDANCE WITH THE STANDARD SPECIFICATIONS, THE LATEST EDITION OF THE "ILLINOIS MANUAL ON UNIFORM TRAFFIC CONTROL DEVICES FOR STREETS AND HIGHWAYS", (MUTCD), THE STANDARD SPECIFICATIONS FOR TRAFFIC CONTROL ITEMS", (SSTCI), THE STANDARD SPECIFICATIONS FOR WATER AND SEWER MAIN CONSTRUCTION IN ILLINOIS JULY 2009 6<sup>TH</sup> EDITION, THE "DETAILS" IN THE PLANS AND THE "SPECIAL PROVISIONS, IDOT STANDARD DRAWINGS, AND VILLAGE OF ORLAND PARK STANDARD DRAWINGS" INCLUDED IN THE CONTRACT DOCUMENTS.
- IN THE GENERAL NOTES, ALL REFERENCES TO ENGINEER SHALL BE INTERPRETED AS THE RESIDENT ENGINEER.

**STAKING**

- THE CONTRACTOR SHALL PROTECT AND CAREFULLY PRESERVE ALL SECTION OR SUBSECTION MONUMENTS OR PROPERTY OR REFERENCE MARKERS UNTIL THE VILLAGE, ITS AGENT OR AN AUTHORIZED SURVEYOR HAS WITNESSED OR OTHERWISE REFERENCED THEIR LOCATIONS.
- THE STATION/OFFSET/ELEVATIONS NOTED FOR ALL DRAINAGE STRUCTURES LOCATED IN THE CURB LINE REFER TO THE POSITION OF THE ADJACENT PROPOSED EDGE OF PAVEMENT. THE CONTRACTOR SHALL BE RESPONSIBLE FOR DETERMINING THE OFFSET NECESSARY FOR EACH STRUCTURE TO SET THE FRAME AND GRATE IN THE PROPER LOCATION. ALL OTHER STRUCTURES ARE DIMENSIONED TO THE CENTER OF STRUCTURE.

**UTILITIES**

- PRIOR TO THE START OF THE CONSTRUCTION OPERATIONS, THE CONTRACTOR SHALL COORDINATE CONSTRUCTION ACTIVITIES WITH UTILITY COMPANIES. THE LOCATION OF PUBLIC OR PRIVATE UTILITIES SHOWN ON THE PLANS ARE APPROXIMATE AND THE VILLAGE OF ORLAND PARK DOES NOT GUARANTEE THEIR ACCURACY. THE CONTRACTOR WILL BE REQUIRED TO ASCERTAIN THE EXACT LOCATION OF SUCH UTILITIES AND EXERCISE CARE DURING CONSTRUCTION OPERATIONS SO AS NOT TO DAMAGE THEM IN ACCORDANCE WITH THE SPECIAL PROVISIONS AND ARTICLE 307.31 OF THE STANDARD SPECIFICATIONS. THE CONTRACTOR SHALL BE RESPONSIBLE FOR CONTACTING THE OWNERS OF ALL EXISTING UTILITIES SO THAT THEIR FACILITIES MAY BE LOCATED AND ADJUSTED OR MOVED.
- BEFORE STARTING ANY EXCAVATION, THE CONTRACTOR SHALL CALL "JULIE" AT 811 FOR FIELD LOCATIONS OF BURIED ELECTRIC, TELEPHONE, GAS, WATER, SEWER, AND CABLE TELEVISION FACILITIES. (48 HOURS NOTIFICATION IS REQUIRED.)
- THE CONTRACTOR SHALL BE RESPONSIBLE FOR THE PROTECTION OF ALL ABOVE AND BELOW GROUND UTILITIES EVEN THOUGH THEY MAY NOT BE SHOWN ON THE PLANS. ANY UTILITY THAT IS DAMAGED DURING CONSTRUCTION SHALL BE REPAIRED OR REPLACED TO THE SATISFACTION OF THE ENGINEER OR THE VILLAGE OF ORLAND PARK. THIS WORK SHALL BE AT THE CONTRACTOR'S EXPENSE.
- ALL MANHOLES, CATCH BASINS, AND VALVE VAULTS SHALL BE MORTARED WITH HYDRAULIC CEMENT AS SHOWN ON THE DETAILS ON THE INSIDE AND OUTSIDE AT ALL STRUCTURE JOINTS BETWEEN BARREL, CONE, AND FLAT TOP SECTIONS. ADJUSTING RINGS SHALL BE MORTARED ON THE OUTSIDE AROUND JOINTS TO PREVENT INFILTRATION PROVIDING THEY ARE OUTSIDE OF PAVED AREAS. ONLY NON-PREFORMED MASTIC SHALL BE USED BETWEEN THE FRAME, RINGS, AND TOP OF CONE OR FLAT TOP. (PREFORMED MASTIC - EZ STICK, RUB-R-NECK, ETC IS NOT ALLOWED ABOVE THE CONE OR FLAT TOP)
- GRADATION OF TRENCH BACKFILL MATERIAL SHALL BE CA-G, AND SHALL BE PLACED IN UNIFORM LAYERS NOT EXCEEDING 12 INCHES (LOOSE MEASURE) AND COMPACTED WITH MECHANICAL EQUIPMENT TO 95% OF STANDARD PROCTOR DENSITY. PIPE BEDDING SHALL BE A MINIMUM OF 4 INCHES THICK.
- ALL FRAMES WITH SELF SEALING CLOSED LIDS TO BE FURNISHED AS PART OF THIS CONTRACT FOR CONSTRUCTION. ADJUSTMENT OR RECONSTRUCTION OF ANY MANHOLES, CATCH BASIN, INLET, VALVE VAULT, OR METER VAULT SHALL HAVE CAST INTO THE LID ONE OF THE FOLLOWING WORDS: ALL LIDS TO BE USED ON STORM SEWER STRUCTURES SHALL BEAR THE WORD "STORM". ALL LIDS TO BE USED ON SANITARY SEWER STRUCTURES SHALL BEAR THE WORD "SANITARY". ALL LIDS TO BE USED ON WATER SYSTEM STRUCTURES SHALL BEAR THE WORD "WATER". ALL CURB BOXES SHALL SAY "DUMP NO WASTE" OR "DRAINS TO RIVERS" OR SIMILAR. THIS WORK SHALL BE CONSIDERED INCIDENTAL TO THE FRAME AND GRATE OR FRAME AND CLOSED LID PROVIDED.
- WHENEVER DURING CONSTRUCTION OPERATIONS ANY LOOSE MATERIAL IS DEPOSITED IN THE FLOW LINE OF DRAINAGE STRUCTURES SUCH THAT THE NATURAL FLOW OF WATER IS OBSTRUCTED, IT SHALL BE REMOVED AT THE CLOSE OF EACH WORKING DAY. AT THE CONCLUSION OF CONSTRUCTION OPERATIONS, ALL UTILITY STRUCTURES SHALL BE FREE FROM

**PAVING AND CURB & GUTTER**

- THE CONTRACTOR SHALL SAW CUT PAVEMENT, CURB & GUTTER, AND SIDEWALK AS INDICATED ON THE PLANS TO SEPARATE THE EXISTING MATERIAL TO BE REMOVED BY MEANS OF AN APPROVED CONCRETE SAW TO A DEPTH AS SHOWN ON THE PLANS OR AS DIRECTED BY THE ENGINEER. THIS WORK SHALL BE CONSIDERED INCIDENTAL TO THE ITEM BEING REMOVED.
- BASE COURSE SHALL NOT BE PLACED ADJACENT TO CURB AND GUTTER UNTIL THE CURB AND GUTTER HAS BEEN PROPERLY CURED AND BACKFILLED TO THE SATISFACTION OF THE ENGINEER.

**STORM SEWER**

- THE COST OF MAKING SEWER CONNECTIONS TO EXISTING OR PROPOSED SEWER OR DRAINAGE STRUCTURES SHALL BE INCLUDED IN THE COST OF THE SEWER OR STRUCTURE BEING CONSTRUCTED.
- WHEN EXISTING DRAINAGE FACILITIES ARE DISTURBED, THE CONTRACTOR SHALL PROVIDE AND MAINTAIN TEMPORARY OUTLETS AND CONNECTIONS FOR ALL PRIVATE OR PUBLIC DRAINS, SEWERS OR CATCH BASINS. THE CONTRACTOR SHALL PROVIDE FACILITIES TO TAKE IN ALL STORM WATER WHICH WILL BE RECEIVED BY THESE DRAINS AND SEWERS AND DISCHARGE THE SAME. HE SHALL PROVIDE AND MAINTAIN AN EFFICIENT PUMPING PLANT, IF NECESSARY, AND A TEMPORARY OUTLET. HE SHALL BE PREPARED AT ALL TIMES TO DISPOSE OF THE WATER RECEIVED FROM TEMPORARY CONNECTIONS UNTIL SUCH TIME AS THE PERMANENT CONNECTIONS WITH SEWERS ARE BUILT AND IN SERVICE. THIS WORK WILL NOT BE PAID FOR SEPARATELY, BUT SHALL BE INCLUDED IN THE CONTRACT.
- THE CONTRACTOR SHALL DETERMINE WHEN FLAT SLAB TOPS ARE REQUIRED ON MANHOLES. NO ADDITIONAL COMPENSATION SHALL BE ALLOWED FOR THE USE OF FLAT SLAB TOPS.

**SIGNING, STRIPING & LANDSCAPING**

- ANY SIGNS WHICH ARE DAMAGED DURING CONSTRUCTION OPERATIONS BEYOND REPAIR SHALL BE REPLACED IN KIND BY THE CONTRACTOR TO THE SATISFACTION OF THE ENGINEER AT NO ADDITIONAL COST TO THE CONTRACT.
- WHEN DIRECTED BY THE ENGINEER, SUPPLEMENTAL WATERING SHALL BE APPLIED TO ALL SODDED AREAS PRIOR TO FIBRAL ACCEPTANCE AT A RATE SPECIFIED BY THE ENGINEER AND IN ACCORDANCE WITH THE STANDARD SPECIFICATIONS AND SPECIAL PROVISIONS.
- THE CONTRACTOR SHALL ADHERE TO LIMITS OF RESTORATION SHOWN. AREAS OUTSIDE THESE LIMITS THAT ARE DAMAGED OR DISTURBED BY THE CONTRACTOR SHALL BE RESTORED BY THE CONTRACTOR AT HIS EXPENSE, AND NO ADDITIONAL COMPENSATION WILL BE ALLOWED.

**MISCELLANEOUS**

- DIMENSIONS: IT SHALL BE THE CONTRACTOR'S RESPONSIBILITY TO VERIFY ALL DIMENSIONS AND CONDITIONS EXISTING IN THE FIELD PRIOR TO ORDERING MATERIALS AND BEGINNING CONSTRUCTION.
- ALL WASTE MATERIAL SHALL BE LEGALLY DISPOSED OF OUTSIDE THE LIMITS OF THE RIGHT-OF-WAY AT THE CONTRACTOR'S EXPENSE.
- PAY ITEMS IN THE SUMMARY OF QUANTITIES HAVE BEEN ESTIMATED. IF, IN THE ENGINEER'S OPINION, THE WORK IS NOT REQUIRED, THE ITEM WILL BE DEDUCTED FROM THE CONTRACT AND NO ADDITIONAL COMPENSATION WILL BE ALLOWED.

### SCHEDULE OF QUANTITIES

CODE	PAY ITEM DESCRIPTION	UNIT	QUANTITY
20800150	TRENCH BACKFILL	CU YD	1
21101615	TOPSOIL FURNISH AND PLACE, 4"	SQ YD	12
25200110	SODDING, SALT TOLERANT	SQ YD	12
44000500	COMBINATION CURB AND GUTTER REMOVAL	FOOT	12
44201741	CLASS D PATCHES, TYPE II, 8 INCH	SQ YD	10
60206905	CATCH BASINS, TYPE C, TYPE 1 FRAME, OPEN LID	EACH	1
60218400	MANHOLES, TYPE A, 4'-DIAMETER, TYPE 1 FRAME, CLOSED LID	EACH	1
60234200	INLETS, TYPE A, TYPE 1 FRAME, OPEN LID	EACH	1
60603800	COMBINATION CONCRETE CURB AND GUTTER, TYPE B-6.12	FOOT	12
55080040	STORM SEWERS, CLASS B, TYPE 1 10"	FOOT	35
72400310	REMOVE SIGN PANEL - TYPE 1	SQ FT	3
72400710	RELOCATE SIGN PANEL - TYPE 1	SQ FT	3
72900200	METAL POST - TYPE B	FOOT	10
X7010216	TRAFFIC CONTROL AND PROTECTION, (SPECIAL)	L SUM	1
X0323117	LANDSCAPING GRAVEL	SQ YD	2
20013798	CONSTRUCTION LAYOUT	L SUM	1

### IDOT STANDARDS

000001	STANDARD SYMBOLS, ABBREVIATIONS, AND PATTERNS
280001	TEMPORARY EROSION CONTROL SYSTEMS
442201	CLASS C AND D PATCHES
602011	CATCH BASIN, TYPE C
602401	MANHOLE TYPE A
602601	PRECAST REINFORCED CONCRETE FLAT SLAB TOP
602701	MANHOLE STEPS
604001	FRAME AND LIDS, TYPE 1
606001	CONCRETE CURB TYPE B AND COMBINATION CONCRETE CURB AND GUTTER
701801	SIDEWALK, CORNER OR CROSSWALK CLOSURE
702001	TRAFFIC CONTROL DEVICES
720006	SIGN PANEL ERECTION DETAILS
780001	TYPICAL PAVEMENT MARKINGS

### BENCHMARK

NO.	DESCRIPTION	ELEV.
OSBM	X CUT ON NORTHEAST BOLT OF HYDRANT AT SOUTHEAST CORNER OF JANE M BARNES ANNEX BUILDING	712.85

*ELEVATION BENCHMARKS  
DATUM: GPS OBSERVED (GEOID 2009)*

### LOCATION

THE PROJECT IS LOCATED IN THE ORLAND PARK VILLAGE CIVIC CENTER PARKING LOT. THE PARKING LOT IS ON THE WEST SIDE OF S. RAVINIA AVE SOUTH OF 147TH STREET.

CALL JULIE 811 WITH THE FOLLOWING:  
 COUNTY: COOK  
 CITY-TOWNSHIP: ORLAND PARK - ORLAND

48 HOURS BEFORE YOU DIG. EXCLUDING SAT., SUN., & HOLIDAYS

THE CONTRACTOR SHALL BE SOLELY RESPONSIBLE FOR JOB SITE SAFETY AS WELL AS SUPERVISION/DIRECTION AND MEANS/METHODS OF CONSTRUCTION

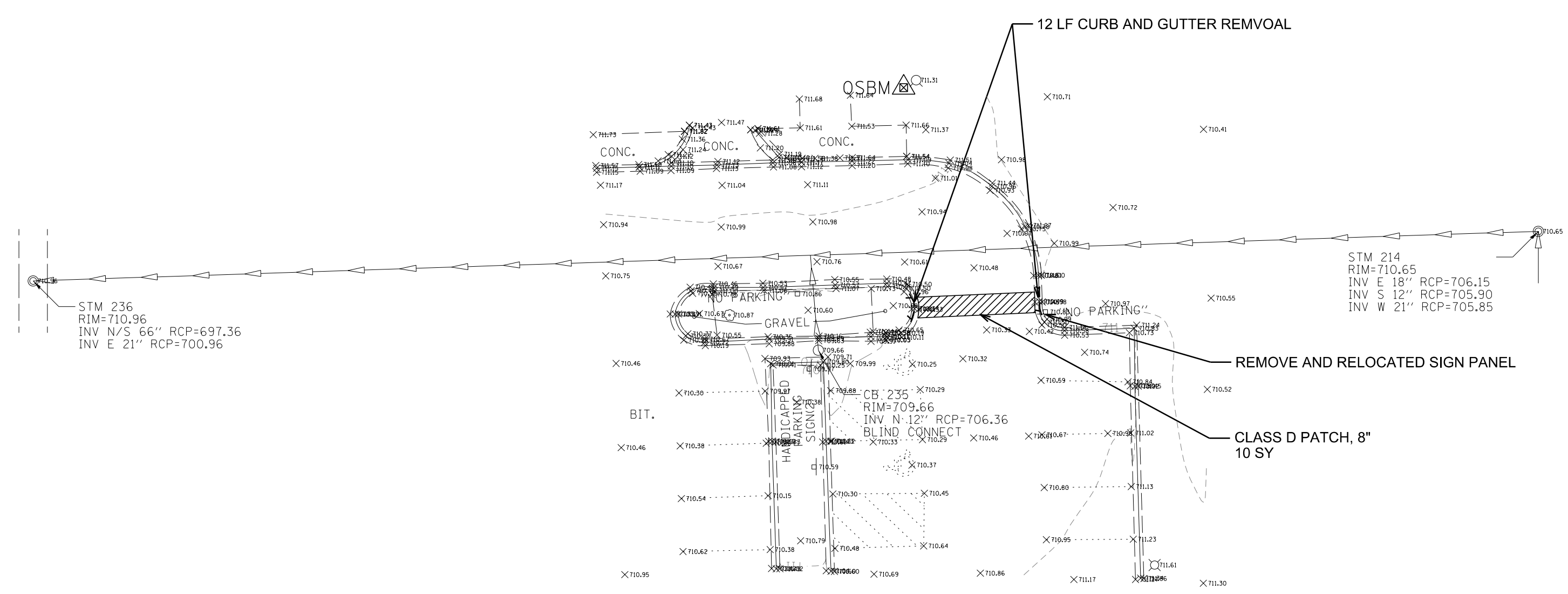
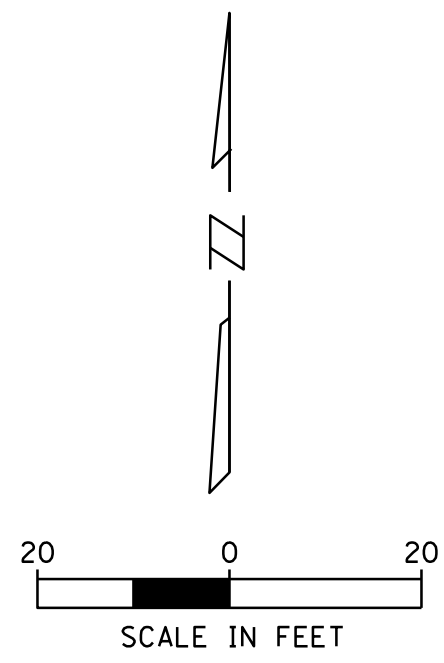
ENGINEER: NICHOLAS J. MOREL  
 DATE: \_\_\_\_\_

ILLINOIS REGISTRATION No. 062-060393  
 EXPIRATION DATE: 11/30/13

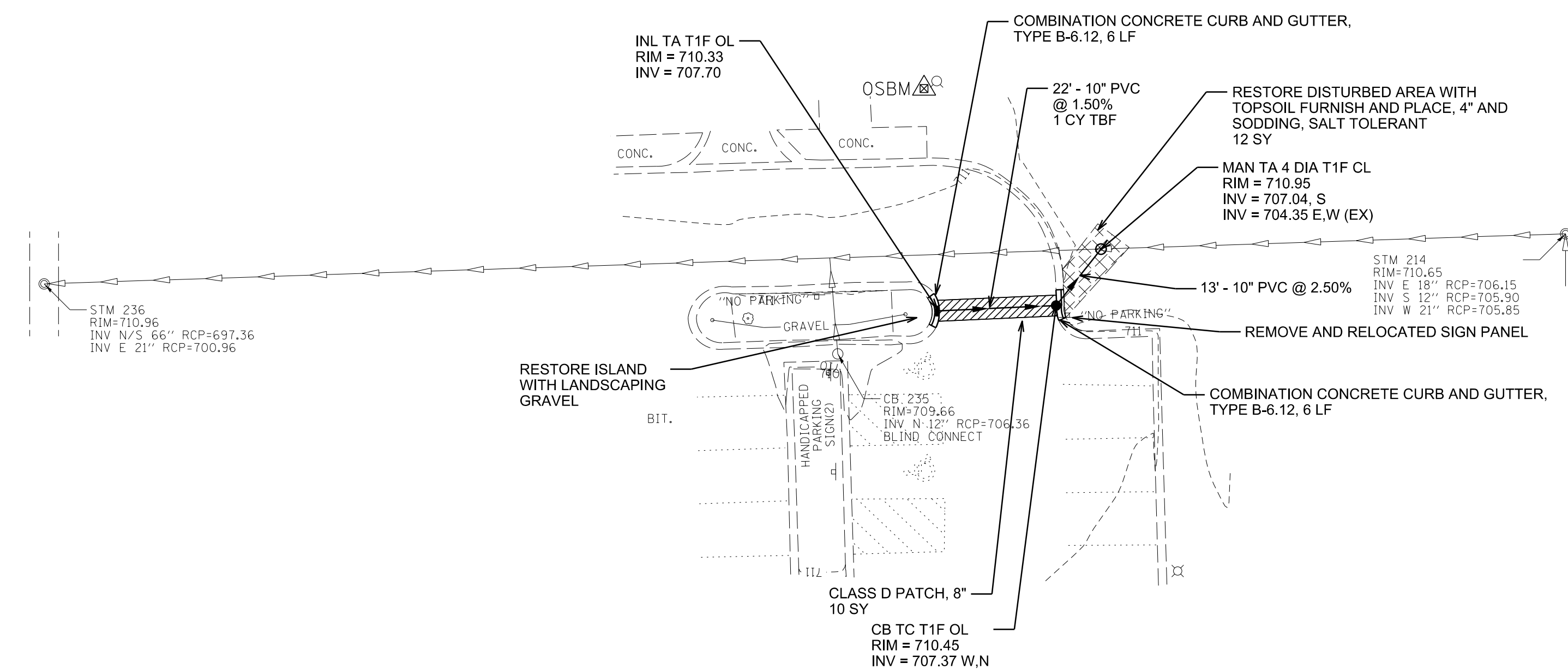
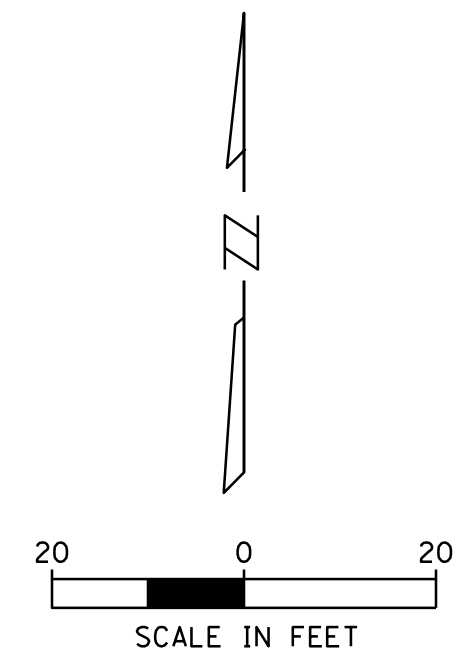
CLIENT: **Village of Orland Park**  
 24700 Ravinia Avenue  
 Orland Park, IL 60462

**CHRISTOPHER B. BURKE ENGINEERING, LTD.**  
 9575 W. Higgins Road, Suite 600  
 Rosemont, Illinois 60018  
 (847) 823-0500

PROFESSIONAL DESIGN FIRM NO. 184-001175  
 EXPIRATION DATE: 04/30/13



**EXISTING CONDITIONS AND REMOVAL PLAN**



**PROPOSED PLAN**

**CHRISTOPHER B. BURKE ENGINEERING, LTD.**  
9575 W. Higgins Road, Suite 600  
Rosemont, Illinois 60018  
(847) 823-0500

CLIENT:  **Village of Orland Park**  
14700 Ravinia Avenue  
Orland Park, IL 60462

NO.	DATE	NATURE OF REVISION	CHKD.	MODEL:	Default
FILE NAME	N:\ORLANDPARK\120218\Civil\PLAN.dgn				

TITLE: **REMOVAL AND PROPOSED PLAN**

PROJ. NO. \_\_\_\_\_  
DATE: \_\_\_\_\_  
SHEET 2 OF 2  
DRAWING NO. **2**