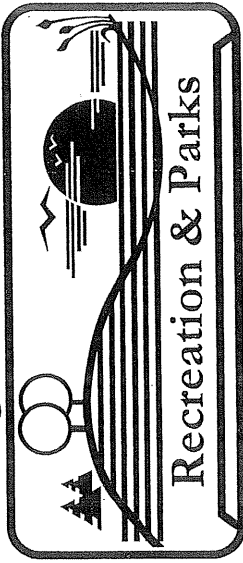


# Village of Orland Park



## Recreation & Parks

### Village of Orland Park, Illinois Orland Park Recreation Center

**OWNER**  
VILLAGE OF ORLAND PARK, ILLINOIS  
1000 WEST WASHINGTON STREET  
ORLAND PARK, ILLINOIS 60452  
TELEPHONE: (708) 476-4875  
FAX: (708) 476-2674

**CONSTRUCTION MANAGER**  
MCCORMICK & CO., INC.  
212 SOUTH WYOMING AVENUE  
CHICAGO, ILLINOIS 60604  
TELEPHONE: (312) 467-1700  
FAX: (312) 467-1700

**ARCHITECT**  
7777 BIRCHDALE AVENUE  
2ND FLOOR  
SKOKIE, ILLINOIS 60076-2101  
TELEPHONE: (708) 734-4340  
FAX: (708) 734-4341

**ASSOCIATE ARCHITECT**  
300 N. MICHIGAN AVE.  
SUITE 1000  
CHICAGO, ILLINOIS 60610  
TELEPHONE: (312) 734-4340  
FAX: (312) 734-4341

**LANDSCAPE ARCHITECTS**  
HENSCHKE DESIGN GROUP  
221 W. WASHINGTON, SUITE 400  
NAPERVILLE, ILLINOIS 60563  
TELEPHONE: (630) 709-8789  
FAX: (630) 709-8789

**STRUCTURAL ENGINEERS**  
REITHUS  
300 W. WASHINGTON, SUITE 400  
NAPERVILLE, ILLINOIS 60563  
TELEPHONE: (630) 709-8789  
FAX: (630) 709-8789

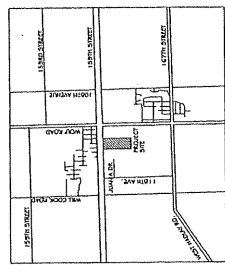
**ENGINEERING CONSULTANTS**  
WMA, INC.  
1000 N. LAKE DRIVE, SUITE 100  
GLENVIEW, ILLINOIS 60045  
TELEPHONE: (847) 835-9377  
FAX: (847) 835-9377

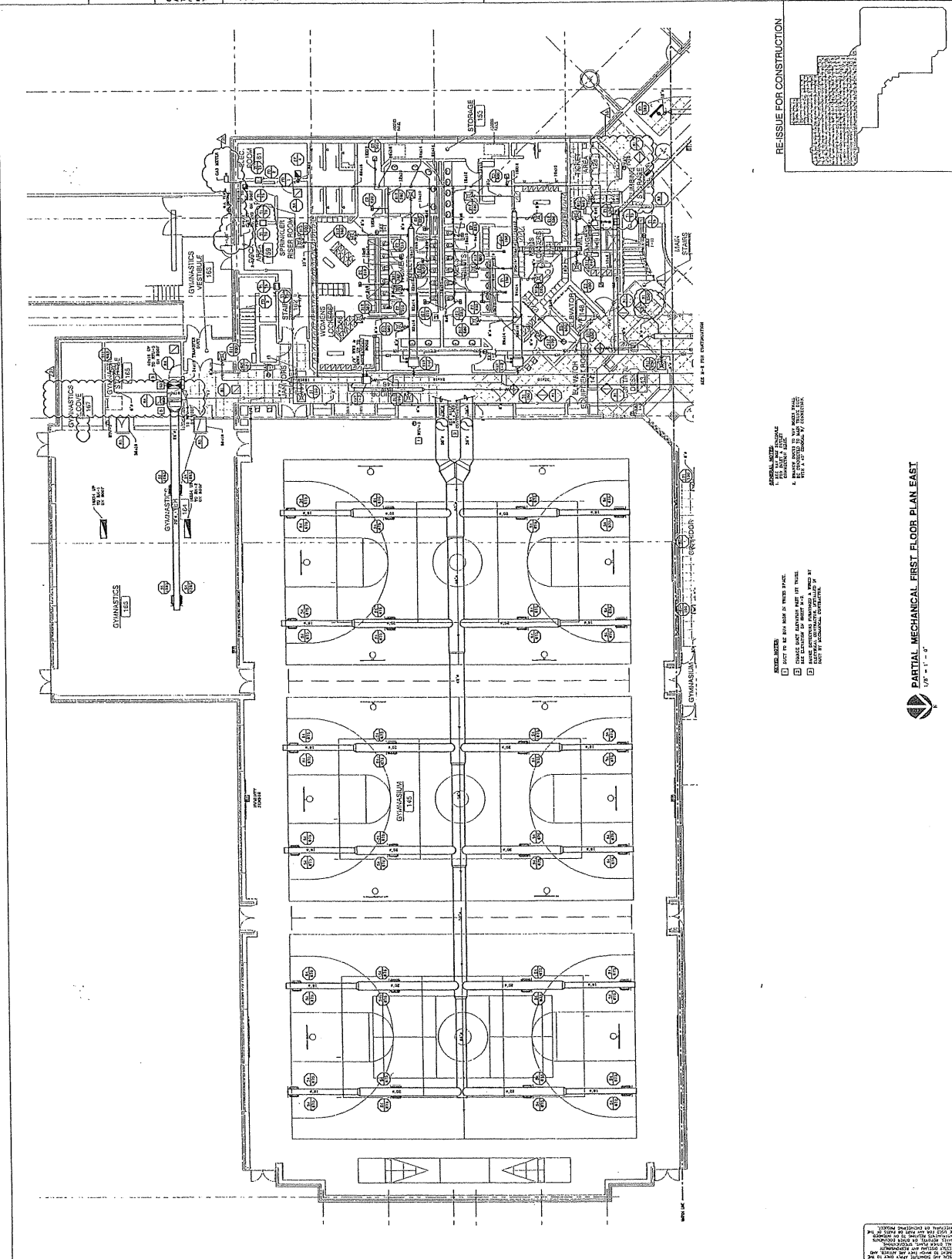
## MECHANICAL, PLUMBING, FIRE PROTECTION AND ELECTRICAL DOCUMENTS

### DRAWING LEGEND

MECHANICAL	PLUMBING	FIRE PROTECTION	ELECTRICAL
M-1 Partial Mechanical Plan	P-1 Partial Foundation Drainage Plan	FP-1 Partial Fire Protection Plan	E-1 Mechanical Plan
M-2 Partial Mechanical Plan	P-2 Partial Foundation Drainage Plan	FP-2 Partial Fire Protection Plan	E-2 Partial Utility Plan
M-3 1st Floor Center Core	P-3 Partial Foundation Drainage Plan	FP-3 Partial Fire Protection Plan	E-3 1st Floor Core
M-4 1st Floor West	P-4 West	FP-4 Partial Fire Protection Plan	E-4 1st Floor Core
M-5 1st Floor East	P-5 Partial Foundation Drainage Plan	FP-5 Partial Fire Protection Plan	E-5 1st Floor West
M-6 2nd Floor Center Core	P-6 1st Floor Core		E-6 1st Floor East
M-7 2nd Floor West	P-7 Partial Foundation Drainage Plan		E-7 Partial Utility Plan
M-8 2nd Floor East	P-8 Partial Water Fixtures Plan		E-8 Partial Core and Communications Plan
M-9 Stairs	P-9 Partial Sanitary and Motor Plumbing		E-9 Partial Core and Communications Plan
M-10 Staircases	P-10 Sewer/Stack		E-10 Partial Core and Communications Plan
			E-11 1st Floor West
			E-12 2nd Floor East
			E-13 2nd Floor Center Core
			E-14 2nd Floor West
			E-15 Stairs and Staircases
			E-16 Staircases and Stairs
			E-17 Staircases, 1st Floor and 2nd Floor
			E-18 Partial Power Plan, 1st Floor East
			E-19 Partial Power Plan, 2nd Floor East
			E-20 Partial Power Plan, 2nd Floor Center Core
			E-21 Partial Power Plan, 2nd Floor West
			E-22 Partial Power Plan, 2nd Floor East
			E-23 Partial Power Plan, 2nd Floor Center Core
			E-24 Partial Power Plan, 2nd Floor West
			E-25 Partial Power Plan, 2nd Floor East
			E-26 Partial Power Plan, 2nd Floor Center Core
			E-27 Partial Power Plan, 2nd Floor West
			E-28 Partial Power Plan, 2nd Floor East
			E-29 Partial Power Plan, 2nd Floor Center Core
			E-30 Partial Power Plan, 2nd Floor West
			E-31 Partial Power Plan, 2nd Floor East
			E-32 Partial Power Plan, 2nd Floor Center Core
			E-33 Partial Power Plan, 2nd Floor West
			E-34 Partial Power Plan, 2nd Floor East
			E-35 Partial Power Plan, 2nd Floor Center Core
			E-36 Partial Power Plan, 2nd Floor West
			E-37 Partial Power Plan, 2nd Floor East
			E-38 Partial Power Plan, 2nd Floor Center Core
			E-39 Partial Power Plan, 2nd Floor West
			E-40 Partial Power Plan, 2nd Floor East
			E-41 Partial Power Plan, 2nd Floor Center Core
			E-42 Partial Power Plan, 2nd Floor West
			E-43 Partial Power Plan, 2nd Floor East
			E-44 Partial Power Plan, 2nd Floor Center Core
			E-45 Partial Power Plan, 2nd Floor West
			E-46 Partial Power Plan, 2nd Floor East
			E-47 Partial Power Plan, 2nd Floor Center Core
			E-48 Partial Power Plan, 2nd Floor West
			E-49 Partial Power Plan, 2nd Floor East
			E-50 Partial Power Plan, 2nd Floor Center Core
			E-51 Partial Power Plan, 2nd Floor West
			E-52 Partial Power Plan, 2nd Floor East
			E-53 Partial Power Plan, 2nd Floor Center Core
			E-54 Partial Power Plan, 2nd Floor West
			E-55 Partial Power Plan, 2nd Floor East
			E-56 Partial Power Plan, 2nd Floor Center Core
			E-57 Partial Power Plan, 2nd Floor West
			E-58 Partial Power Plan, 2nd Floor East
			E-59 Partial Power Plan, 2nd Floor Center Core
			E-60 Partial Power Plan, 2nd Floor West
			E-61 Partial Power Plan, 2nd Floor East
			E-62 Partial Power Plan, 2nd Floor Center Core
			E-63 Partial Power Plan, 2nd Floor West
			E-64 Partial Power Plan, 2nd Floor East
			E-65 Partial Power Plan, 2nd Floor Center Core
			E-66 Partial Power Plan, 2nd Floor West
			E-67 Partial Power Plan, 2nd Floor East
			E-68 Partial Power Plan, 2nd Floor Center Core
			E-69 Partial Power Plan, 2nd Floor West
			E-70 Partial Power Plan, 2nd Floor East
			E-71 Partial Power Plan, 2nd Floor Center Core
			E-72 Partial Power Plan, 2nd Floor West
			E-73 Partial Power Plan, 2nd Floor East
			E-74 Partial Power Plan, 2nd Floor Center Core
			E-75 Partial Power Plan, 2nd Floor West
			E-76 Partial Power Plan, 2nd Floor East
			E-77 Partial Power Plan, 2nd Floor Center Core
			E-78 Partial Power Plan, 2nd Floor West
			E-79 Partial Power Plan, 2nd Floor East
			E-80 Partial Power Plan, 2nd Floor Center Core
			E-81 Partial Power Plan, 2nd Floor West
			E-82 Partial Power Plan, 2nd Floor East
			E-83 Partial Power Plan, 2nd Floor Center Core
			E-84 Partial Power Plan, 2nd Floor West
			E-85 Partial Power Plan, 2nd Floor East
			E-86 Partial Power Plan, 2nd Floor Center Core
			E-87 Partial Power Plan, 2nd Floor West
			E-88 Partial Power Plan, 2nd Floor East
			E-89 Partial Power Plan, 2nd Floor Center Core
			E-90 Partial Power Plan, 2nd Floor West
			E-91 Partial Power Plan, 2nd Floor East
			E-92 Partial Power Plan, 2nd Floor Center Core
			E-93 Partial Power Plan, 2nd Floor West
			E-94 Partial Power Plan, 2nd Floor East
			E-95 Partial Power Plan, 2nd Floor Center Core
			E-96 Partial Power Plan, 2nd Floor West
			E-97 Partial Power Plan, 2nd Floor East
			E-98 Partial Power Plan, 2nd Floor Center Core
			E-99 Partial Power Plan, 2nd Floor West
			E-100 Partial Power Plan, 2nd Floor East

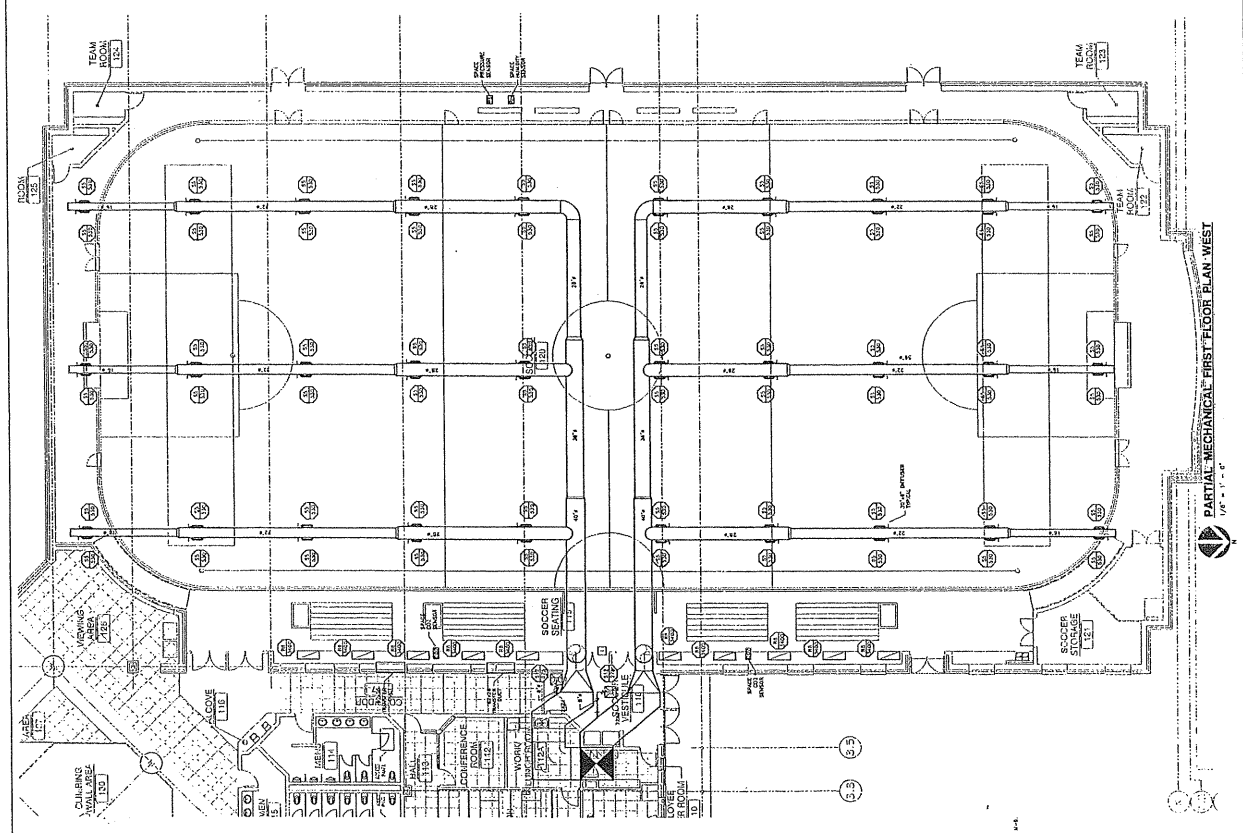
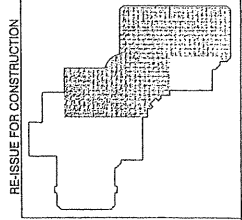
LOCATION MAP





THIS DOCUMENT IS THE PROPERTY OF TARGET BRANDS, INC. IT IS TO BE USED ONLY FOR THE PROJECT AND SITE SPECIFICALLY IDENTIFIED HEREIN. IT IS NOT TO BE REPRODUCED, COPIED, OR TRANSMITTED IN ANY FORM OR BY ANY MEANS, ELECTRONIC OR MECHANICAL, INCLUDING PHOTOCOPYING, RECORDING, OR BY ANY INFORMATION STORAGE AND RETRIEVAL SYSTEM. WITHOUT THE WRITTEN PERMISSION OF TARGET BRANDS, INC.




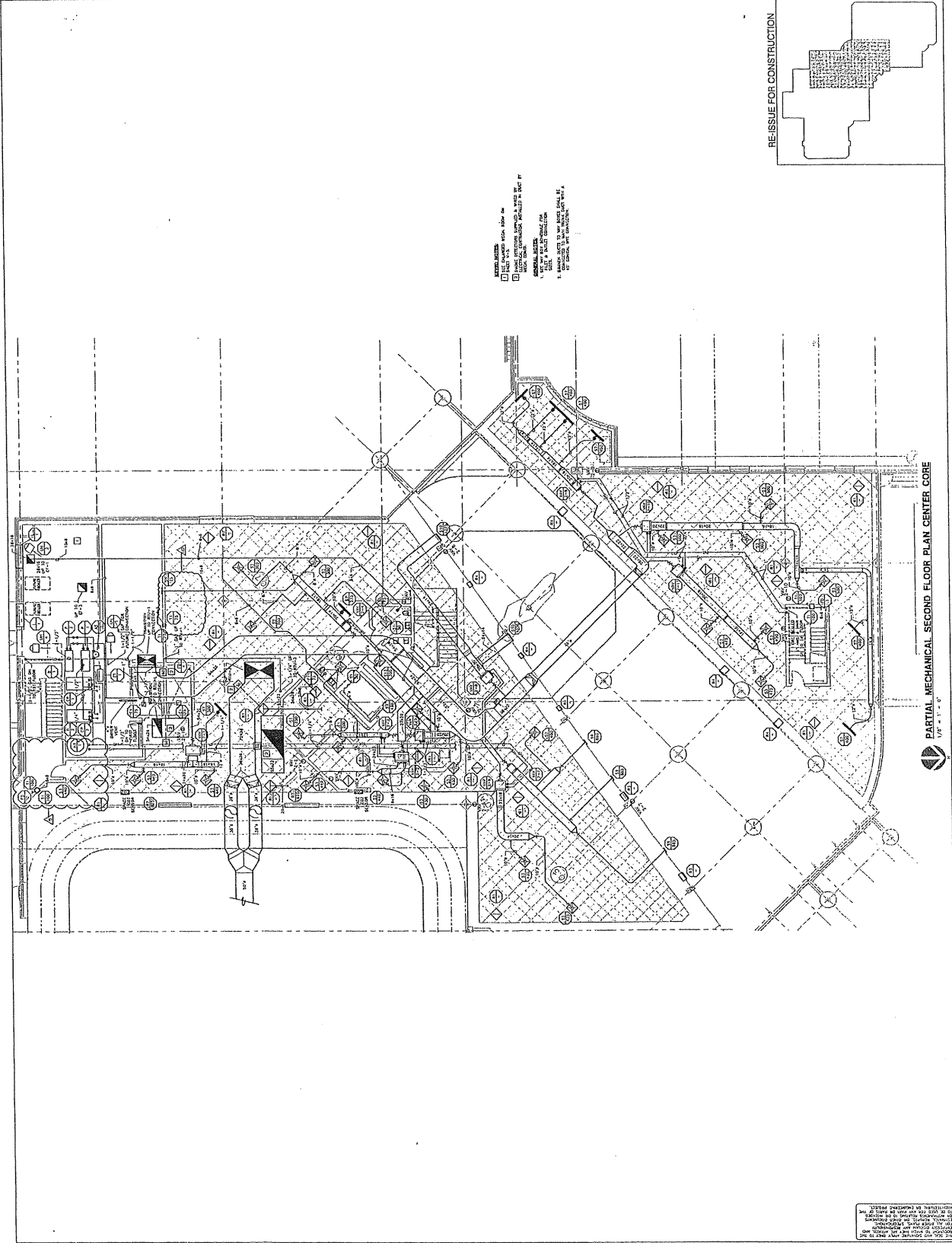


**GENERAL NOTES:**  
 1. SEE DATUM IN THESE SPACES.

**NOTED NOTES:**  
 1. THIS SPACE SHALL BE MAINTAINED AS SEPARATE IN SEPARATION. SEE DETAIL IN SHEET M-4.

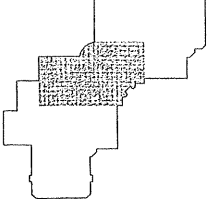
THIS DRAWING IS THE PROPERTY OF YARGER ASSOCIATES, INC. AND IS NOT TO BE REPRODUCED OR TRANSMITTED IN ANY FORM OR BY ANY MEANS, ELECTRONIC OR MECHANICAL, INCLUDING PHOTOCOPYING, RECORDING, OR BY ANY INFORMATION STORAGE AND RETRIEVAL SYSTEM, WITHOUT THE PRIOR WRITTEN PERMISSION OF YARGER ASSOCIATES, INC.

 <p><b>Vanger</b> MECHANICAL ENGINEERS 1111 W. WASHINGTON ST. CHICAGO, IL 60606 TEL: 312.467.1234 WWW.VANGERMECH.COM</p>	<p><b>DATE:</b> 07-01-2011 BY: [Signature]</p>	<p><b>PROJECT:</b> 9815 <b>SHEET NO.:</b> M-4</p>				
	<p><b>CLIENT:</b> VILLAGE OF ORLAND PARK, ILLINOIS 14550 Main Ave., Orland Park, Illinois 60462</p>	<p><b>REVISIONS:</b></p> <table border="1"> <tr> <th>NO.</th> <th>DESCRIPTION</th> </tr> <tr> <td>1</td> <td>AS SHOWN</td> </tr> </table>	NO.	DESCRIPTION	1	AS SHOWN
NO.	DESCRIPTION					
1	AS SHOWN					



ALL WORK SHALL BE IN ACCORDANCE WITH THE CITY OF CHICAGO MECHANICAL CODE AND THE NATIONAL FIRE PROTECTION ASSOCIATION (NFPA) 90A. THE CONTRACTOR SHALL BE RESPONSIBLE FOR OBTAINING ALL NECESSARY PERMITS AND APPROVALS FROM THE CITY OF CHICAGO AND THE DEPARTMENT OF PARKS & RECREATION.

RE-ISSUE FOR CONSTRUCTION



PARTIAL MECHANICAL SECOND FLOOR PLAN CENTER CORE  
1/8" = 1'-0"

ALL WORK SHALL BE IN ACCORDANCE WITH THE CITY OF CHICAGO MECHANICAL CODE AND THE NATIONAL FIRE PROTECTION ASSOCIATION (NFPA) 90A. THE CONTRACTOR SHALL BE RESPONSIBLE FOR OBTAINING ALL NECESSARY PERMITS AND APPROVALS FROM THE CITY OF CHICAGO AND THE DEPARTMENT OF PARKS & RECREATION.



Vanger  
 1450 North Ave.  
 Chicago, IL 60610  
 (312) 786-1000  
 www.vanger.com

3125 Vanger Associates, Inc.  
 All rights reserved.  
 No part of this document may be reproduced without  
 the prior written permission of Vanger Associates, Inc.

**DESIGN:**  
 Vanger Associates, Inc.  
 1450 North Ave.  
 Chicago, IL 60610  
 (312) 786-1000

**CONSTRUCTION:**  
 Vanger Associates, Inc.  
 1450 North Ave.  
 Chicago, IL 60610  
 (312) 786-1000

**MECHANICAL:**  
 Vanger Associates, Inc.  
 1450 North Ave.  
 Chicago, IL 60610  
 (312) 786-1000

**MECHANICAL:**  
 Vanger Associates, Inc.  
 1450 North Ave.  
 Chicago, IL 60610  
 (312) 786-1000

**MECHANICAL:**  
 Vanger Associates, Inc.  
 1450 North Ave.  
 Chicago, IL 60610  
 (312) 786-1000

**MECHANICAL:**  
 Vanger Associates, Inc.  
 1450 North Ave.  
 Chicago, IL 60610  
 (312) 786-1000

**MECHANICAL:**  
 Vanger Associates, Inc.  
 1450 North Ave.  
 Chicago, IL 60610  
 (312) 786-1000

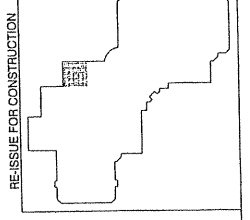
**MECHANICAL:**  
 Vanger Associates, Inc.  
 1450 North Ave.  
 Chicago, IL 60610  
 (312) 786-1000

**MECHANICAL:**  
 Vanger Associates, Inc.  
 1450 North Ave.  
 Chicago, IL 60610  
 (312) 786-1000

**MECHANICAL:**  
 Vanger Associates, Inc.  
 1450 North Ave.  
 Chicago, IL 60610  
 (312) 786-1000

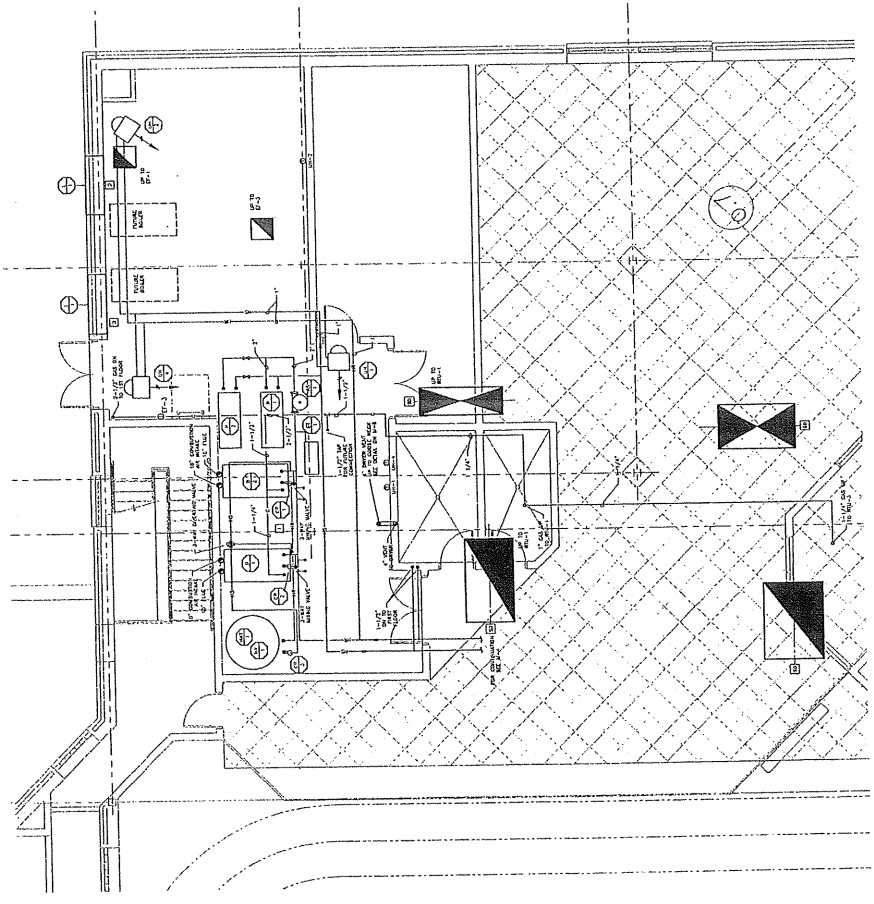
**MECHANICAL:**  
 Vanger Associates, Inc.  
 1450 North Ave.  
 Chicago, IL 60610  
 (312) 786-1000

ORLAND PARK RECREATION CENTER  
 VILLAGE OF ORLAND PARK, ILLINOIS  
 Department of Parks & Recreation  
 1450 North Ave., Orland Park, Illinois 60482  
 MECHANICAL PLAN



RE-ISSUE FOR CONSTRUCTION

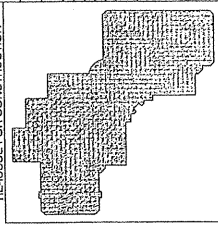
MECHANICAL ROOM PIPING PLAN  
 1/4" = 1'-0"



NOTES:  
 1. ALL WORK SHALL BE IN ACCORDANCE WITH THE CITY OF ORLAND PARK SPECIFICATIONS FOR MECHANICAL WORK.  
 2. THE CONTRACTOR SHALL BE RESPONSIBLE FOR OBTAINING ALL NECESSARY PERMITS AND APPROVALS FROM THE CITY OF ORLAND PARK.  
 3. THE CONTRACTOR SHALL BE RESPONSIBLE FOR PROTECTING ALL EXISTING UTILITIES AND STRUCTURES.  
 4. THE CONTRACTOR SHALL BE RESPONSIBLE FOR MAINTAINING ACCESS TO ALL ADJACENT PROPERTIES.  
 5. THE CONTRACTOR SHALL BE RESPONSIBLE FOR CLEANING AND RESTORATION OF ALL AREAS AFFECTED BY THE WORK.

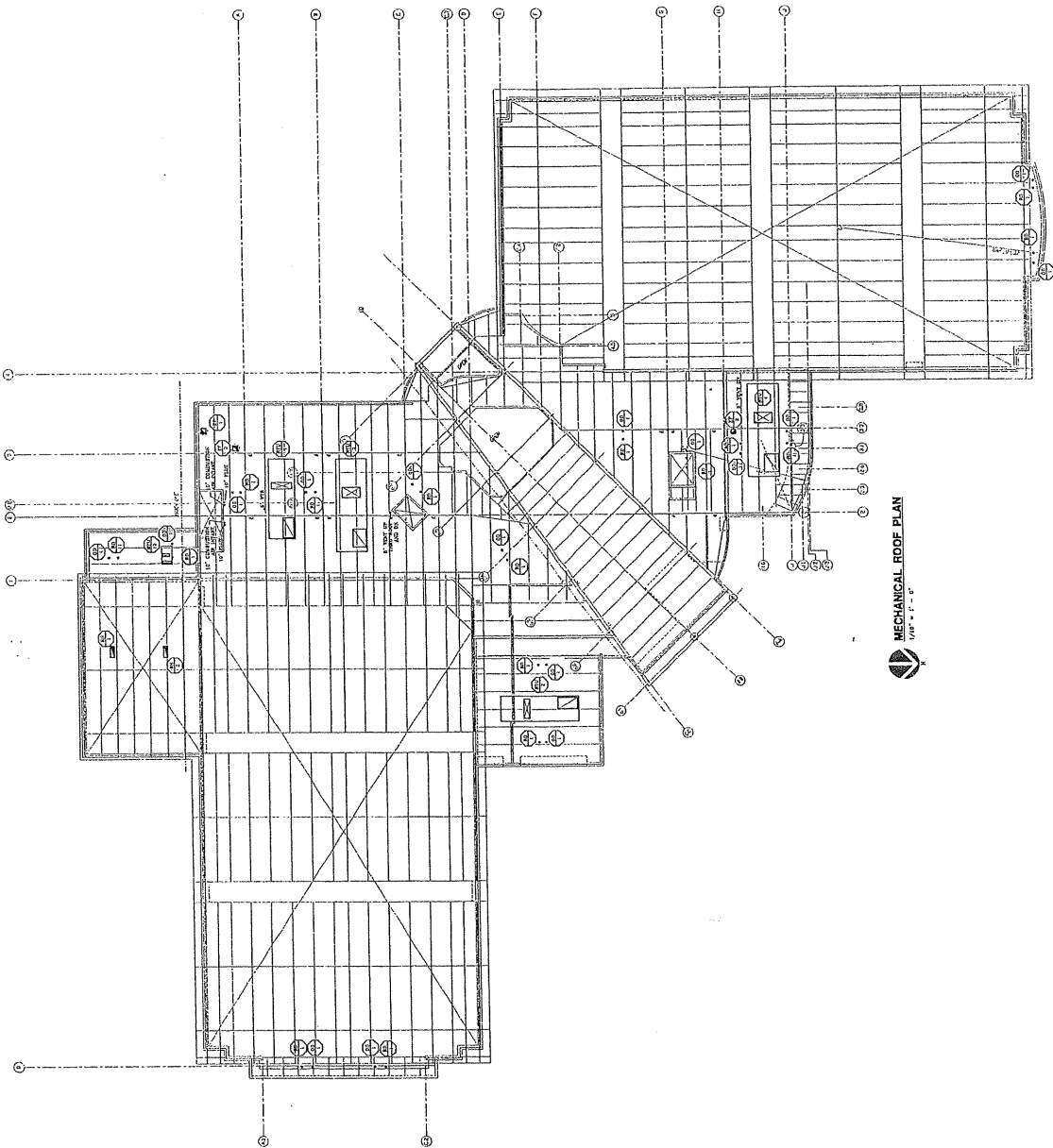
THIS DRAWING IS THE PROPERTY OF VANGER ASSOCIATES, INC. AND IS NOT TO BE REPRODUCED OR TRANSMITTED IN ANY FORM OR BY ANY MEANS, ELECTRONIC OR MECHANICAL, INCLUDING PHOTOCOPYING, RECORDING, OR BY ANY INFORMATION STORAGE AND RETRIEVAL SYSTEM, WITHOUT THE WRITTEN PERMISSION OF VANGER ASSOCIATES, INC.

DATE: 07-01-2001  
 PROJECT: 9815  
 SHEET NO.: M-5



RE-ISSUE FOR CONSTRUCTION

MECHANICAL ROOF PLAN  
1/4" = 1' - 0"



ORLAND PARK RECREATION CENTER  
VILLAGE OF ORLAND PARK, ILLINOIS  
14650 MIRA AVE. ORLAND PARK, ILLINOIS 60462  
MECHANICAL ROOF PLAN

Date: 07-01-2001  
Project: 9815  
Sheet No. M-6

Revisions:

MECHANICAL ROOF PLAN

MECHANICAL ROOF PLAN

MECHANICAL ROOF PLAN

MECHANICAL ROOF PLAN

MECHANICAL ROOF PLAN

MECHANICAL ROOF PLAN

MECHANICAL ROOF PLAN

MECHANICAL ROOF PLAN

MECHANICAL ROOF PLAN

MECHANICAL ROOF PLAN

MECHANICAL ROOF PLAN

MECHANICAL ROOF PLAN

MECHANICAL ROOF PLAN

MECHANICAL ROOF PLAN

MECHANICAL ROOF PLAN

MECHANICAL ROOF PLAN

MECHANICAL ROOF PLAN

MECHANICAL ROOF PLAN

MECHANICAL ROOF PLAN

MECHANICAL ROOF PLAN

MECHANICAL ROOF PLAN

MECHANICAL ROOF PLAN

MECHANICAL ROOF PLAN

MECHANICAL ROOF PLAN

MECHANICAL ROOF PLAN

MECHANICAL ROOF PLAN

MECHANICAL ROOF PLAN

MECHANICAL ROOF PLAN



Yarger Mechanical Engineers, Inc.  
14650 Mira Ave.  
Orland Park, Illinois 60462  
Phone: (708) 585-1100  
Fax: (708) 585-1101

© 2001 Yarger Associates, Inc.  
This drawing is the property of Yarger Associates, Inc.  
No part of this drawing may be reproduced without the written permission of Yarger Associates, Inc.

DATE: 07-01-2001  
PROJECT: 9815  
SHEET NO. M-6

MECHANICAL ROOF PLAN

MECHANICAL ROOF PLAN

MECHANICAL ROOF PLAN

MECHANICAL ROOF PLAN

MECHANICAL ROOF PLAN

MECHANICAL ROOF PLAN

MECHANICAL ROOF PLAN

MECHANICAL ROOF PLAN

MECHANICAL ROOF PLAN

MECHANICAL ROOF PLAN

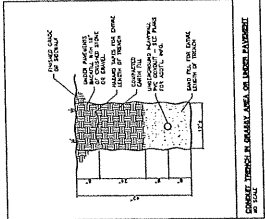
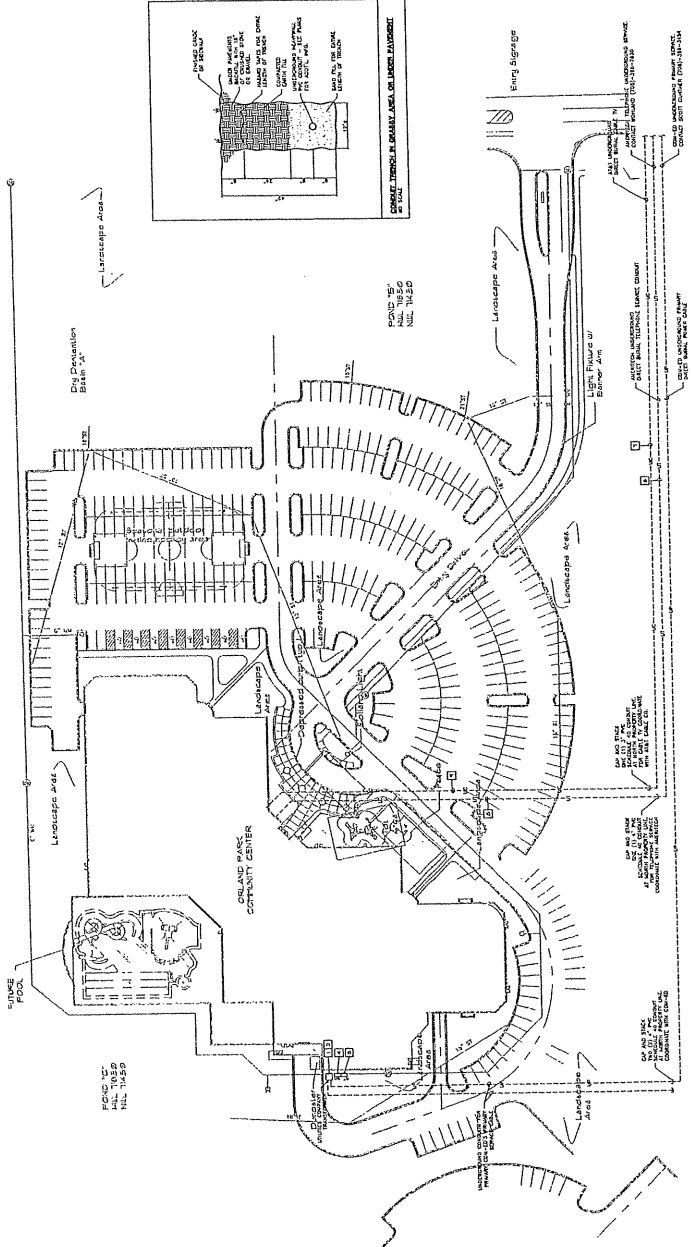
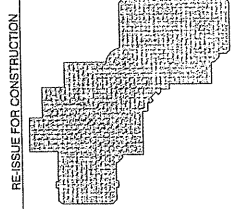
THIS DRAWING IS THE PROPERTY OF YARGER ASSOCIATES, INC. NO PART OF THIS DRAWING MAY BE REPRODUCED WITHOUT THE WRITTEN PERMISSION OF YARGER ASSOCIATES, INC.

<p>MECHANICAL PLAN          1. INSULATION          2. FRAMING          3. WINDOW/DOOR</p>	<p>MECHANICAL PLAN          1. FLASHING          2. DRAINAGE          3. STRUCTURE</p>	<p>MECHANICAL PLAN          1. WATERPROOFING          2. STRUCTURAL SUPPORT</p>	<p>MECHANICAL PLAN          1. WATERPROOFING          2. STRUCTURAL SUPPORT</p>	<p>MECHANICAL PLAN          1. WATERPROOFING          2. STRUCTURAL SUPPORT</p>	<p>MECHANICAL PLAN          1. WATERPROOFING          2. STRUCTURAL SUPPORT</p>	<p>MECHANICAL PLAN          1. WATERPROOFING          2. STRUCTURAL SUPPORT</p>	<p>MECHANICAL PLAN          1. WATERPROOFING          2. STRUCTURAL SUPPORT</p>	<p>MECHANICAL PLAN          1. WATERPROOFING          2. STRUCTURAL SUPPORT</p>	<p>MECHANICAL PLAN          1. WATERPROOFING          2. STRUCTURAL SUPPORT</p>	<p>MECHANICAL PLAN          1. WATERPROOFING          2. STRUCTURAL SUPPORT</p>	<p>MECHANICAL PLAN          1. WATERPROOFING          2. STRUCTURAL SUPPORT</p>	<p>MECHANICAL PLAN          1. WATERPROOFING          2. STRUCTURAL SUPPORT</p>	<p>MECHANICAL PLAN          1. WATERPROOFING          2. STRUCTURAL SUPPORT</p>	<p>MECHANICAL PLAN          1. WATERPROOFING          2. STRUCTURAL SUPPORT</p>	<p>MECHANICAL PLAN          1. WATERPROOFING          2. STRUCTURAL SUPPORT</p>	<p>MECHANICAL PLAN          1. WATERPROOFING          2. STRUCTURAL SUPPORT</p>	<p>MECHANICAL PLAN          1. WATERPROOFING          2. STRUCTURAL SUPPORT</p>	<p>MECHANICAL PLAN          1. WATERPROOFING          2. STRUCTURAL SUPPORT</p>	<p>MECHANICAL PLAN          1. WATERPROOFING          2. STRUCTURAL SUPPORT</p>	<p>MECHANICAL PLAN          1. WATERPROOFING          2. STRUCTURAL SUPPORT</p>	<p>MECHANICAL PLAN          1. WATERPROOFING          2. STRUCTURAL SUPPORT</p>	<p>MECHANICAL PLAN          1. WATERPROOFING          2. STRUCTURAL SUPPORT</p>	<p>MECHANICAL PLAN          1. WATERPROOFING          2. STRUCTURAL SUPPORT</p>	<p>MECHANICAL PLAN          1. WATERPROOFING          2. STRUCTURAL SUPPORT</p>	<p>MECHANICAL PLAN          1. WATERPROOFING          2. STRUCTURAL SUPPORT</p>	<p>MECHANICAL PLAN          1. WATERPROOFING          2. STRUCTURAL SUPPORT</p>	<p>MECHANICAL PLAN          1. WATERPROOFING          2. STRUCTURAL SUPPORT</p>	<p>MECHANICAL PLAN          1. WATERPROOFING          2. STRUCTURAL SUPPORT</p>	<p>MECHANICAL PLAN          1. WATERPROOFING          2. STRUCTURAL SUPPORT</p>	<p>MECHANICAL PLAN          1. WATERPROOFING          2. STRUCTURAL SUPPORT</p>	<p>MECHANICAL PLAN          1. WATERPROOFING          2. STRUCTURAL SUPPORT</p>	<p>MECHANICAL PLAN          1. WATERPROOFING          2. STRUCTURAL SUPPORT</p>	<p>MECHANICAL PLAN          1. WATERPROOFING          2. STRUCTURAL SUPPORT</p>	<p>MECHANICAL PLAN          1. WATERPROOFING          2. STRUCTURAL SUPPORT</p>	<p>MECHANICAL PLAN          1. WATERPROOFING          2. STRUCTURAL SUPPORT</p>	<p>MECHANICAL PLAN          1. WATERPROOFING          2. STRUCTURAL SUPPORT</p>	<p>MECHANICAL PLAN          1. WATERPROOFING          2. STRUCTURAL SUPPORT</p>	<p>MECHANICAL PLAN          1. WATERPROOFING          2. STRUCTURAL SUPPORT</p>	<p>MECHANICAL PLAN          1. WATERPROOFING          2. STRUCTURAL SUPPORT</p>	<p>MECHANICAL PLAN          1. WATERPROOFING          2. STRUCTURAL SUPPORT</p>	<p>MECHANICAL PLAN          1. WATERPROOFING          2. STRUCTURAL SUPPORT</p>	<p>MECHANICAL PLAN          1. WATERPROOFING          2. STRUCTURAL SUPPORT</p>	<p>MECHANICAL PLAN          1. WATERPROOFING          2. STRUCTURAL SUPPORT</p>	<p>MECHANICAL PLAN          1. WATERPROOFING          2. STRUCTURAL SUPPORT</p>	<p>MECHANICAL PLAN          1. WATERPROOFING          2. STRUCTURAL SUPPORT</p>	<p>MECHANICAL PLAN          1. WATERPROOFING          2. STRUCTURAL SUPPORT</p>	<p>MECHANICAL PLAN          1. WATERPROOFING          2. STRUCTURAL SUPPORT</p>	<p>MECHANICAL PLAN          1. WATERPROOFING          2. STRUCTURAL SUPPORT</p>	<p>MECHANICAL PLAN          1. WATERPROOFING          2. STRUCTURAL SUPPORT</p>	<p>MECHANICAL PLAN          1. WATERPROOFING          2. STRUCTURAL SUPPORT</p>	<p>MECHANICAL PLAN          1. WATERPROOFING          2. STRUCTURAL SUPPORT</p>	<p>MECHANICAL PLAN          1. WATERPROOFING          2. STRUCTURAL SUPPORT</p>	<p>MECHANICAL PLAN          1. WATERPROOFING          2. STRUCTURAL SUPPORT</p>	<p>MECHANICAL PLAN          1. WATERPROOFING          2. STRUCTURAL SUPPORT</p>	<p>MECHANICAL PLAN          1. WATERPROOFING          2. STRUCTURAL SUPPORT</p>
---	--	---	---	---	---	---	---	---	---	---	---	---	---	---	---	---	---	---	---	---	---	---	---	---	---	---	---	---	---	---	---	---	---	---	---	---	---	---	---	---	---	---	---	---	---	---	---	---	---	---	---	---	---	---	---



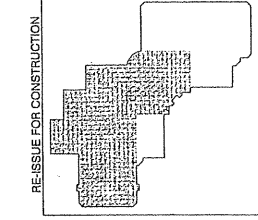
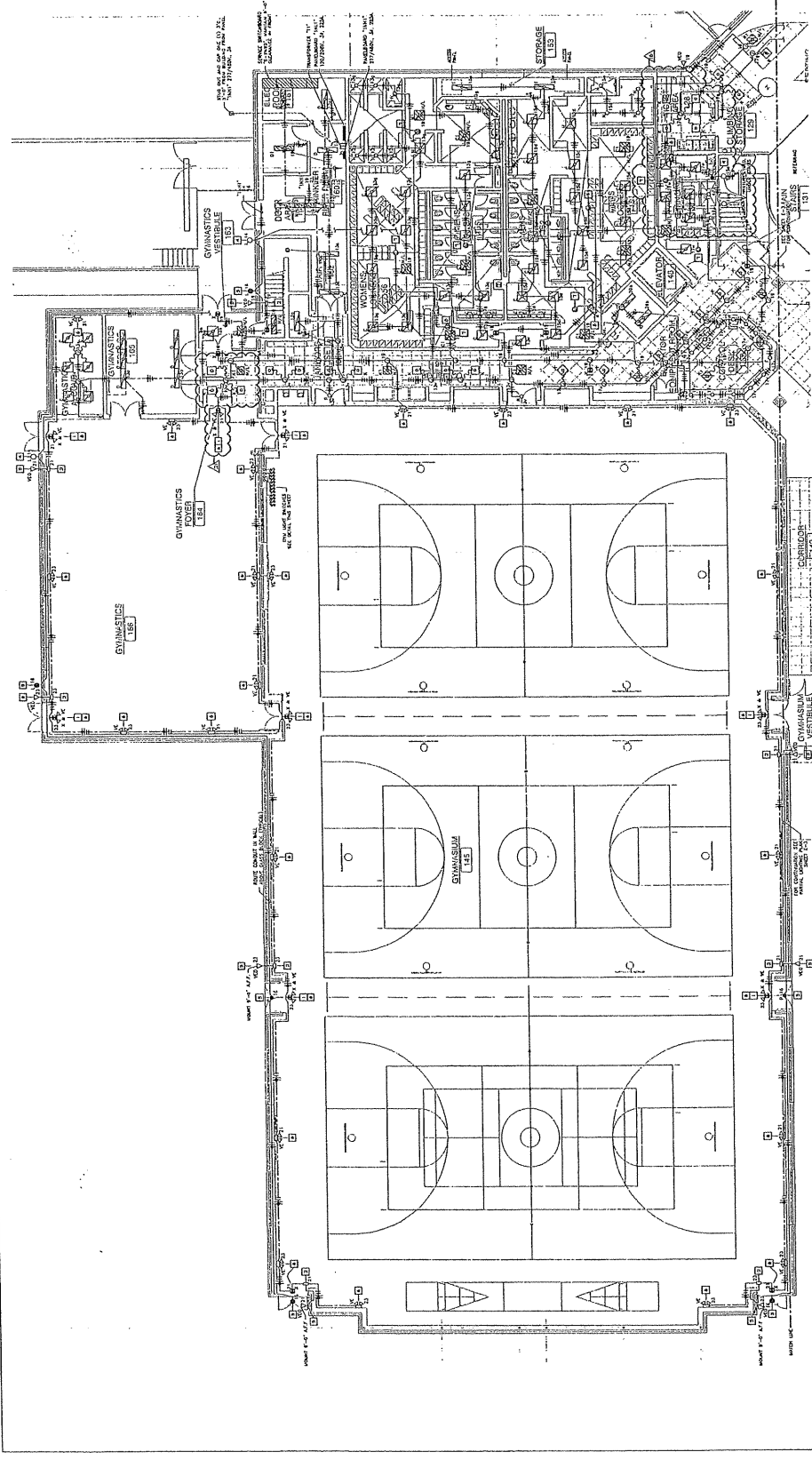






- ELECTRICAL NOTED NOTES:**
- 1. ALL CONDUITS SHALL BE 3/4" RIGID UNLESS OTHERWISE SPECIFIED.
  - 2. CONDUITS TO BE INSTALLED IN ACCORDANCE WITH THE EC CODE REQUIREMENTS.
  - 3. ALL CONDUITS TO BE INSTALLED IN ACCORDANCE WITH THE EC CODE REQUIREMENTS.
  - 4. ALL CONDUITS TO BE INSTALLED IN ACCORDANCE WITH THE EC CODE REQUIREMENTS.
  - 5. ALL CONDUITS TO BE INSTALLED IN ACCORDANCE WITH THE EC CODE REQUIREMENTS.
  - 6. ALL CONDUITS TO BE INSTALLED IN ACCORDANCE WITH THE EC CODE REQUIREMENTS.
  - 7. ALL CONDUITS TO BE INSTALLED IN ACCORDANCE WITH THE EC CODE REQUIREMENTS.
  - 8. ALL CONDUITS TO BE INSTALLED IN ACCORDANCE WITH THE EC CODE REQUIREMENTS.
  - 9. ALL CONDUITS TO BE INSTALLED IN ACCORDANCE WITH THE EC CODE REQUIREMENTS.
  - 10. ALL CONDUITS TO BE INSTALLED IN ACCORDANCE WITH THE EC CODE REQUIREMENTS.

THIS DRAWING IS THE PROPERTY OF YARGER ASSOCIATES, INC. AND IS NOT TO BE REPRODUCED WITHOUT THE WRITTEN CONSENT OF YARGER ASSOCIATES, INC.

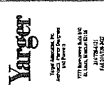


GYMNASIUM LIGHTING SWITCH DETAIL

- ELECTRICAL NOTES:**
- 1. REFER TO THE ELECTRICAL SPECIFICATIONS FOR THE COMPLETE LIST OF MATERIALS AND METHODS OF INSTALLATION.
  - 2. ALL ELECTRICAL WORK SHALL BE IN ACCORDANCE WITH THE NATIONAL ELECTRICAL CODE (NEC) AND ALL LOCAL ORDINANCES.
  - 3. ALL ELECTRICAL WORK SHALL BE DONE IN ACCORDANCE WITH THE MANUFACTURER'S INSTRUCTIONS.
  - 4. ALL ELECTRICAL WORK SHALL BE DONE IN ACCORDANCE WITH THE ILLINOIS ELECTRICAL CODE.
  - 5. ALL ELECTRICAL WORK SHALL BE DONE IN ACCORDANCE WITH THE ILLINOIS ELECTRICAL CODE.
  - 6. ALL ELECTRICAL WORK SHALL BE DONE IN ACCORDANCE WITH THE ILLINOIS ELECTRICAL CODE.
  - 7. ALL ELECTRICAL WORK SHALL BE DONE IN ACCORDANCE WITH THE ILLINOIS ELECTRICAL CODE.
  - 8. ALL ELECTRICAL WORK SHALL BE DONE IN ACCORDANCE WITH THE ILLINOIS ELECTRICAL CODE.
  - 9. ALL ELECTRICAL WORK SHALL BE DONE IN ACCORDANCE WITH THE ILLINOIS ELECTRICAL CODE.
  - 10. ALL ELECTRICAL WORK SHALL BE DONE IN ACCORDANCE WITH THE ILLINOIS ELECTRICAL CODE.

**PARTIAL ELECTRICAL LIGHTING PLAN FIRST FLOOR EAST**  
 1/8" = 1' - 0"

THIS DOCUMENT IS THE PROPERTY OF YAGER ENGINEERING, INC. IT IS TO BE USED ONLY FOR THE PROJECT AND SITE SPECIFICALLY IDENTIFIED HEREON. IT IS NOT TO BE REPRODUCED, COPIED, OR TRANSMITTED IN ANY FORM OR BY ANY MEANS, ELECTRONIC OR MECHANICAL, INCLUDING PHOTOCOPYING, RECORDING, OR BY ANY INFORMATION STORAGE AND RETRIEVAL SYSTEM, WITHOUT THE WRITTEN PERMISSION OF YAGER ENGINEERING, INC.

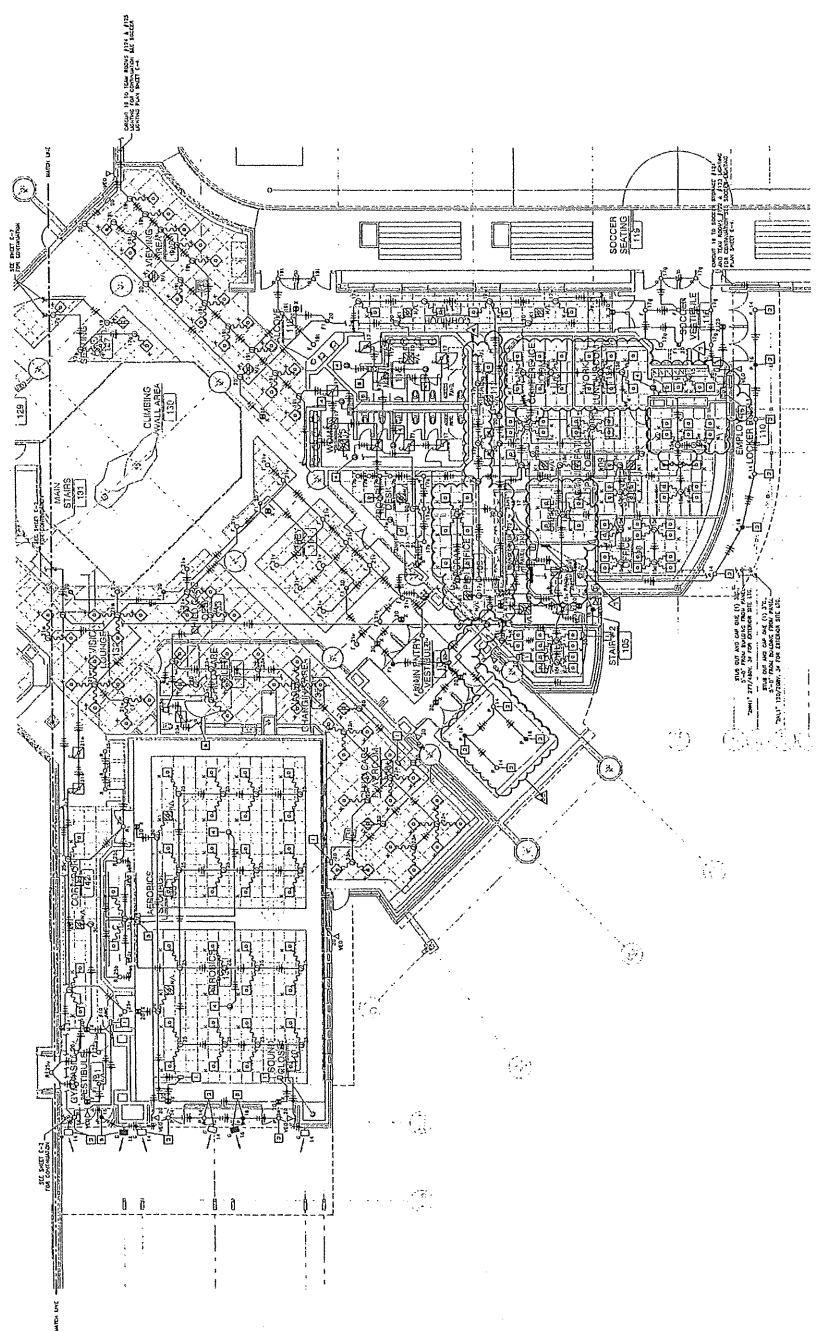
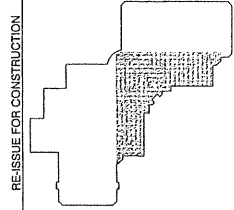


© 2000 VARGOR ASSOCIATES, INC.  
 1450 BRINKS AVE. ORLAND PARK, ILLINOIS 60162  
 TEL: 630.584.1100  
 FAX: 630.584.1101  
 WWW.VARGOR.COM

PROJECT: ORLAND PARK RECREATION CENTER  
 CLIENT: VILLAGE OF ORLAND PARK  
 ARCHITECT: HOK

DATE: 07-21-2001  
 REVISIONS:  
 1. 08-01-01: REVISIONS APPROVED  
 2. 08-01-01: REVISIONS APPROVED  
 3. 08-01-01: REVISIONS APPROVED

PROJECT: 9815  
 SHEET NO. E-3



- ELECTRICAL NOTED NOTES:**
- 1. REFER TO ELECTRICAL SYMBOL SCHEDULE FOR SYMBOLS.
  - 2. REFER TO ELECTRICAL SYMBOL SCHEDULE FOR SYMBOLS.
  - 3. REFER TO ELECTRICAL SYMBOL SCHEDULE FOR SYMBOLS.
  - 4. REFER TO ELECTRICAL SYMBOL SCHEDULE FOR SYMBOLS.
  - 5. REFER TO ELECTRICAL SYMBOL SCHEDULE FOR SYMBOLS.
  - 6. REFER TO ELECTRICAL SYMBOL SCHEDULE FOR SYMBOLS.
  - 7. REFER TO ELECTRICAL SYMBOL SCHEDULE FOR SYMBOLS.
  - 8. REFER TO ELECTRICAL SYMBOL SCHEDULE FOR SYMBOLS.
  - 9. REFER TO ELECTRICAL SYMBOL SCHEDULE FOR SYMBOLS.
  - 10. REFER TO ELECTRICAL SYMBOL SCHEDULE FOR SYMBOLS.

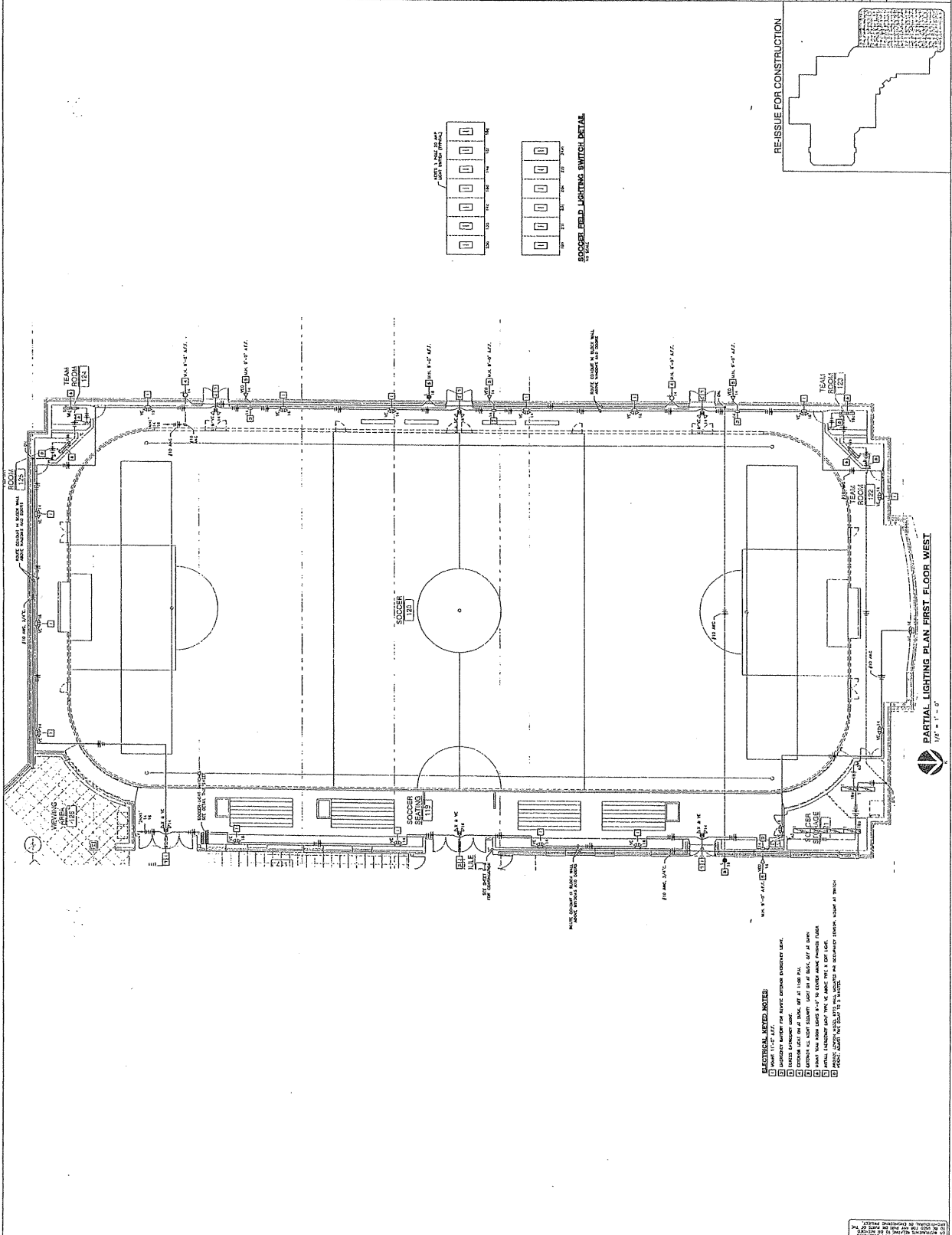
THIS DRAWING IS THE PROPERTY OF VARGOR ASSOCIATES, INC. AND IS NOT TO BE REPRODUCED OR TRANSMITTED IN ANY FORM OR BY ANY MEANS, ELECTRONIC OR MECHANICAL, WITHOUT THE WRITTEN PERMISSION OF VARGOR ASSOCIATES, INC.

PARTIAL LIGHTING PLAN FIRST FLOOR CENTER CORE  
 1/8" = 1' = 0"



RE-ISSUE FOR CONSTRUCTION

ELECTRICAL LIGHTING PLAN  
 1450 BRINKS AVE. ORLAND PARK, ILLINOIS 60162  
 VILLAGE OF ORLAND PARK, ILLINOIS  
 ORLAND PARK RECREATION CENTER



**ELECTRICAL SYMBOLS:**  
 □ 100W 110V 1' x 1' A.F.F.  
 □ 100W 110V 1' x 1' A.F.F. (WITH CENTER EXHAUSTOR CASE)  
 □ 100W 110V 1' x 1' A.F.F. (WITH EXHAUSTOR CASE)  
 □ 100W 110V 1' x 1' A.F.F. (WITH EXHAUSTOR CASE)  
 □ 100W 110V 1' x 1' A.F.F. (WITH EXHAUSTOR CASE)  
 □ 100W 110V 1' x 1' A.F.F. (WITH EXHAUSTOR CASE)

**ELECTRICAL NOTES:**  
 1. ALL LIGHTING FIXTURES TO BE INSTALLED IN ACCORDANCE WITH THE IBC AND THE IFC.  
 2. ALL LIGHTING FIXTURES TO BE INSTALLED IN ACCORDANCE WITH THE IBC AND THE IFC.  
 3. ALL LIGHTING FIXTURES TO BE INSTALLED IN ACCORDANCE WITH THE IBC AND THE IFC.  
 4. ALL LIGHTING FIXTURES TO BE INSTALLED IN ACCORDANCE WITH THE IBC AND THE IFC.  
 5. ALL LIGHTING FIXTURES TO BE INSTALLED IN ACCORDANCE WITH THE IBC AND THE IFC.

**REVISIONS:**

NO.	DATE	DESCRIPTION
1	07-01-2001	ISSUED FOR PERMIT

**ORLAND PARK RECREATION CENTER**  
 ELECTRICAL LIGHTING PLAN  
 14500 Braham Ave., Orland Park, Illinois 60452  
 Yarger Associates, Inc.



© 2001 Target Brands, Inc.  
 ALL RIGHTS RESERVED.  
 REGISTERED SERVICE MARK  
 OF TARGET BRANDS, INC.  
 TARGET BRANDS, INC.

DATE: 07/01/2001  
 PROJECT: 9915  
 SHEET NO.: E-5

PROJECT: 9915  
 SHEET NO.: E-5

DATE: 07/01/2001  
 PROJECT: 9915  
 SHEET NO.: E-5

DATE: 07/01/2001  
 PROJECT: 9915  
 SHEET NO.: E-5

DATE: 07/01/2001  
 PROJECT: 9915  
 SHEET NO.: E-5

DATE: 07/01/2001  
 PROJECT: 9915  
 SHEET NO.: E-5

DATE: 07/01/2001  
 PROJECT: 9915  
 SHEET NO.: E-5

DATE: 07/01/2001  
 PROJECT: 9915  
 SHEET NO.: E-5

DATE: 07/01/2001  
 PROJECT: 9915  
 SHEET NO.: E-5

DATE: 07/01/2001  
 PROJECT: 9915  
 SHEET NO.: E-5

DATE: 07/01/2001  
 PROJECT: 9915  
 SHEET NO.: E-5

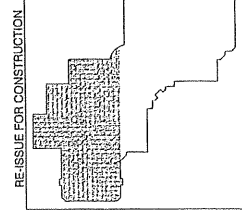
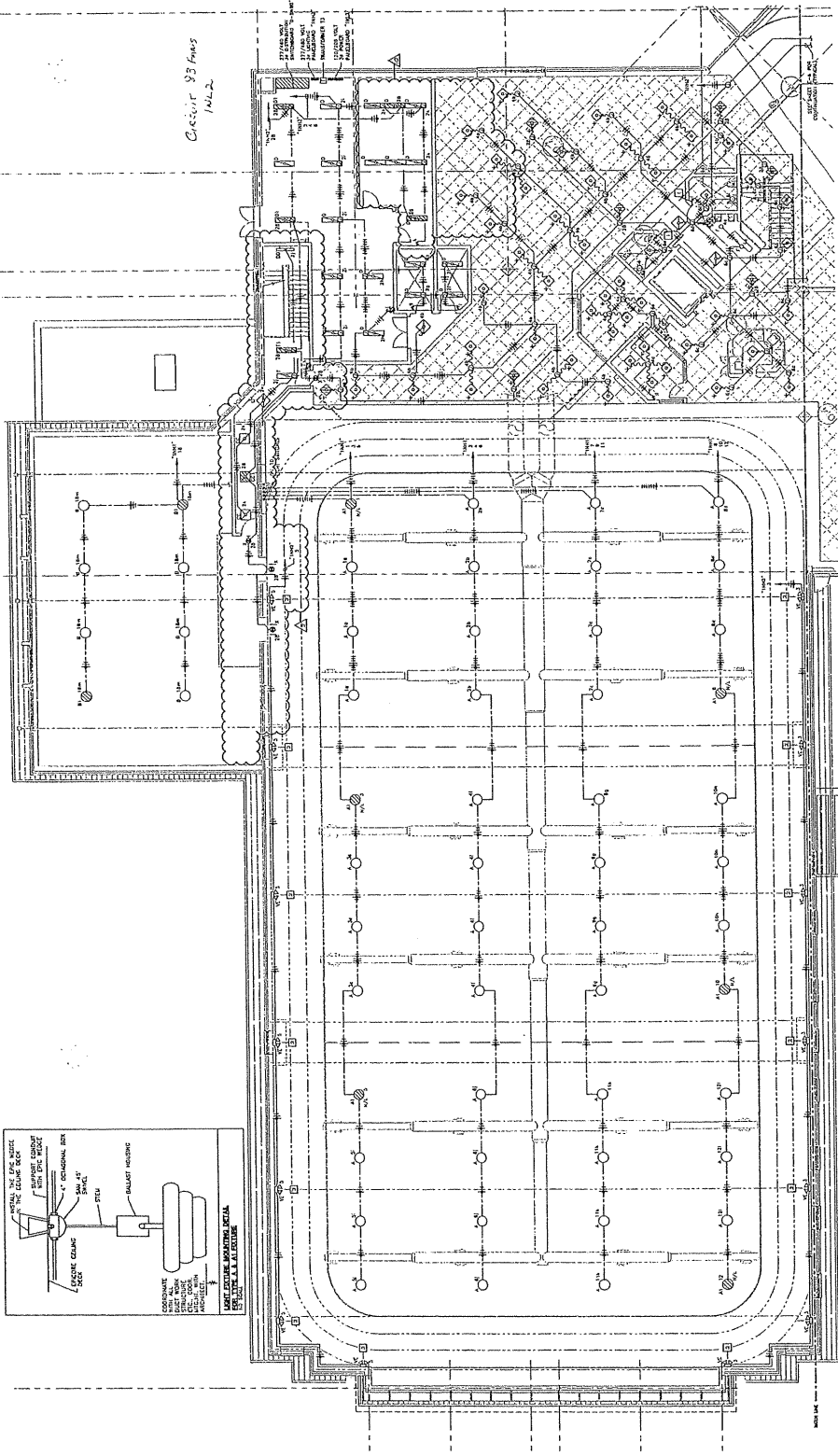
DATE: 07/01/2001  
 PROJECT: 9915  
 SHEET NO.: E-5

DATE: 07/01/2001  
 PROJECT: 9915  
 SHEET NO.: E-5

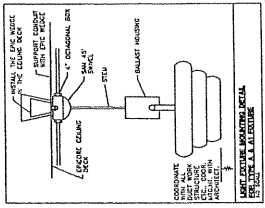
DATE: 07/01/2001  
 PROJECT: 9915  
 SHEET NO.: E-5

**ORLAND PARK RECREATION CENTER**  
 VILLAGE OF ORLAND PARK, ILLINOIS  
 14850 TRAVIS AVE. ORLAND PARK, ILLINOIS 60452  
 DEPARTMENT OF PARKS & RECREATION

DATE: 07/01/2001  
 REVISIONS:  
 PROJECT: 9915  
 SHEET NO.: E-5



**ELECTRICAL NOTES:**  
 1) PROVIDE ALL LIGHT FIXTURES MOUNTED PER OCCUPANCY SECTOR, MOUNT AT SWITCH HEIGHT.  
 2) PROVIDE ALL LIGHT FIXTURES WITH 1/2\"/>



**PARTIAL LIGHTING PLAN - SECOND FLOOR EAST**  
 1/8" = 1' - 0"

ORLAND PARK RECREATION CENTER  
 VILLAGE OF ORLAND PARK, ILLINOIS  
 14850 TRAVIS AVE. ORLAND PARK, ILLINOIS 60452  
 DEPARTMENT OF PARKS & RECREATION







Yarger  
 1459 RIVERS AVENUE  
 ORLAND PARK, ILLINOIS 60452  
 TEL: 708.584.1100  
 FAX: 708.584.1101  
 WWW.YARGER.COM

© 2001 Yarger Associates, Inc.  
 All rights reserved.  
 No part of this document may be reproduced without the written permission of Yarger Associates, Inc.

DATE: 07/01/2001  
 PROJECT: 9815  
 SHEET NO. E-7

DESIGNER: YARGER ASSOCIATES, INC.  
 PROJECT NO.: 9815  
 SHEET NO.: E-7

DATE: 07/01/2001  
 PROJECT: 9815  
 SHEET NO.: E-7

DATE: 07/01/2001  
 PROJECT: 9815  
 SHEET NO.: E-7

DATE: 07/01/2001  
 PROJECT: 9815  
 SHEET NO.: E-7

DATE: 07/01/2001  
 PROJECT: 9815  
 SHEET NO.: E-7

DATE: 07/01/2001  
 PROJECT: 9815  
 SHEET NO.: E-7

DATE: 07/01/2001  
 PROJECT: 9815  
 SHEET NO.: E-7

DATE: 07/01/2001  
 PROJECT: 9815  
 SHEET NO.: E-7

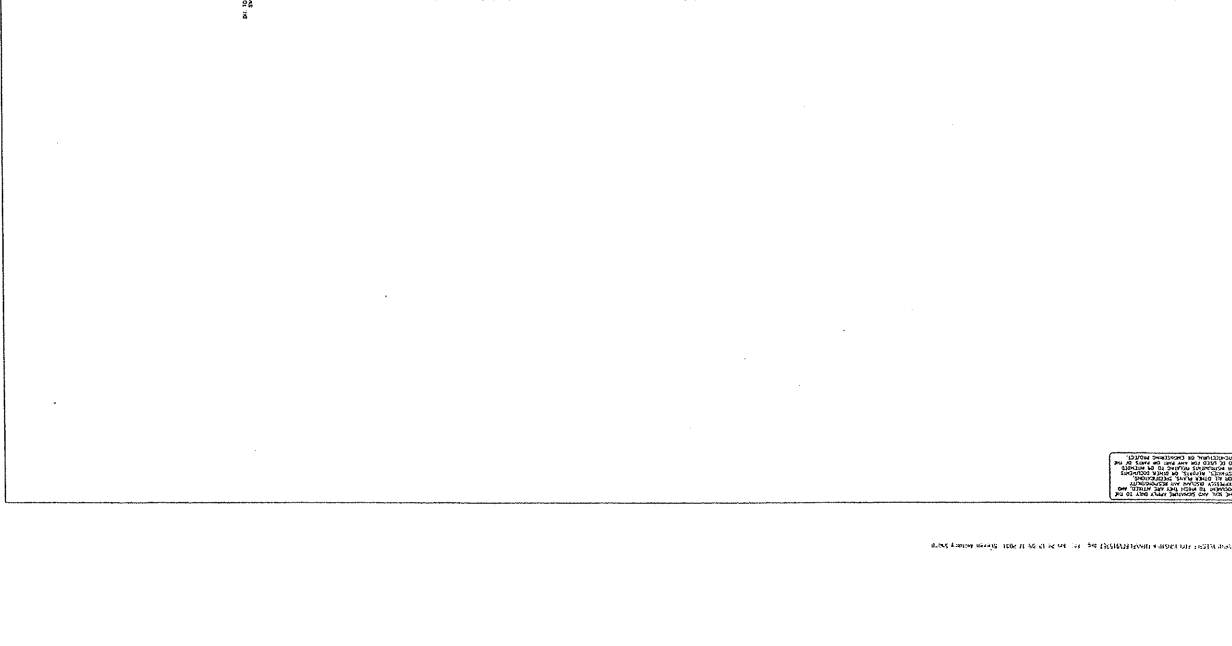
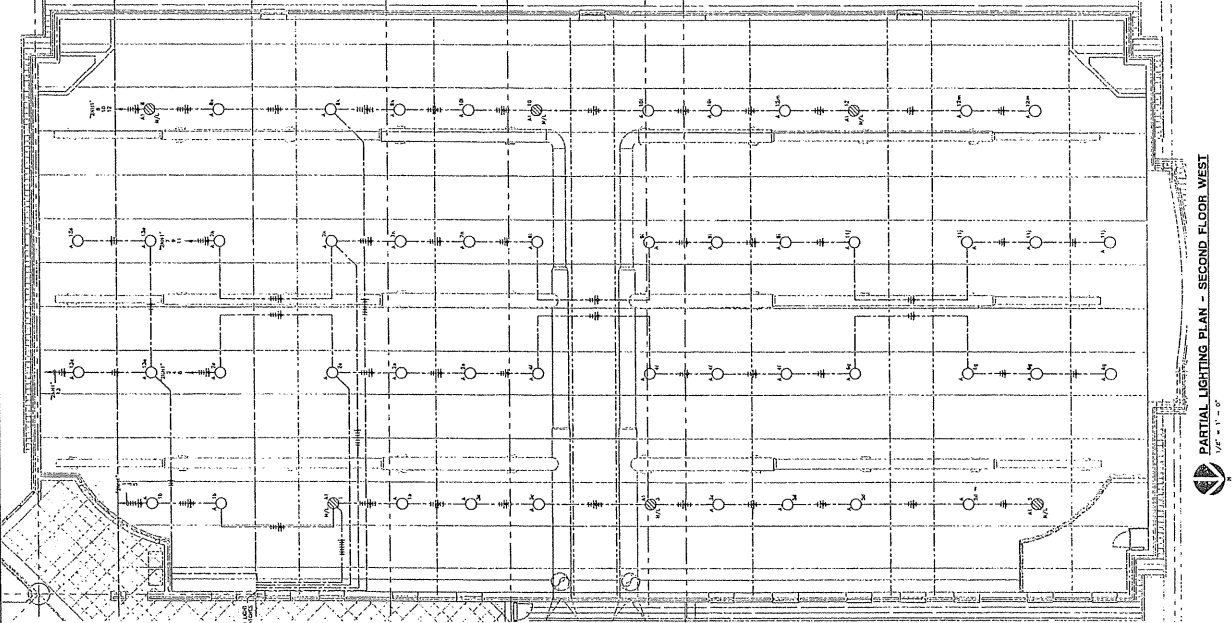
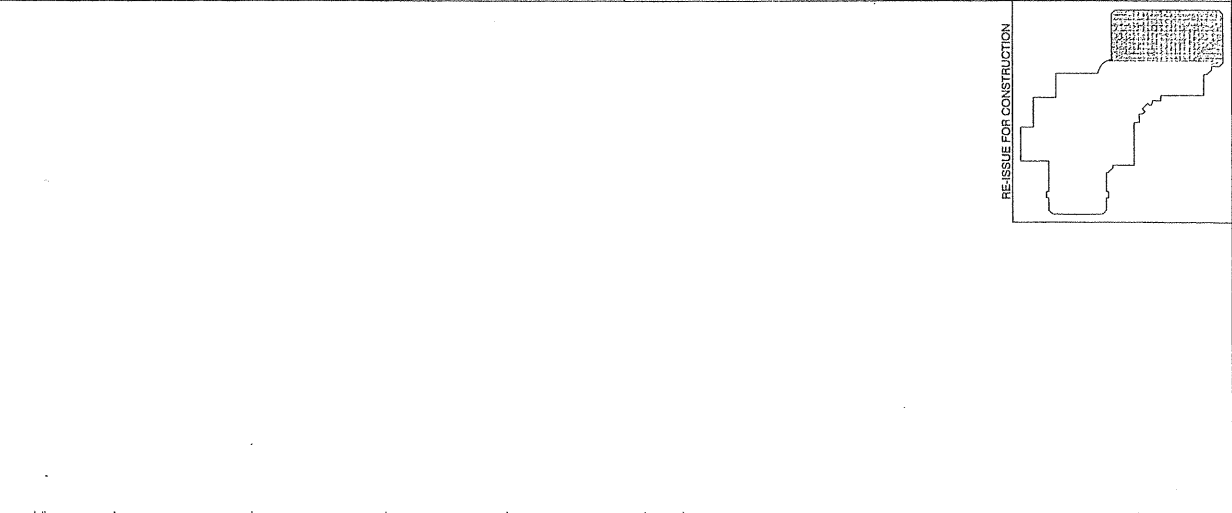
DATE: 07/01/2001  
 PROJECT: 9815  
 SHEET NO.: E-7

DATE: 07/01/2001  
 PROJECT: 9815  
 SHEET NO.: E-7

DATE: 07/01/2001  
 PROJECT: 9815  
 SHEET NO.: E-7

DATE: 07/01/2001  
 PROJECT: 9815  
 SHEET NO.: E-7

DATE: 07/01/2001  
 PROJECT: 9815  
 SHEET NO.: E-7



RE-ISSUE FOR CONSTRUCTION

NO.	DATE	DESCRIPTION
1	07/01/2001	ISSUED FOR CONSTRUCTION

ORLAND PARK RECREATION CENTER  
 VILLAGE OF ORLAND PARK, ILLINOIS  
 1459 RIVERS AVE. ORLAND PARK, ILLINOIS 60452  
 DEPARTMENT OF PARKS & RECREATION

Date: 07-01-2001

Revisions:

Project: 9815  
 Sheet No. E-7

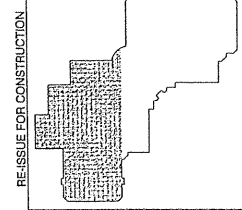
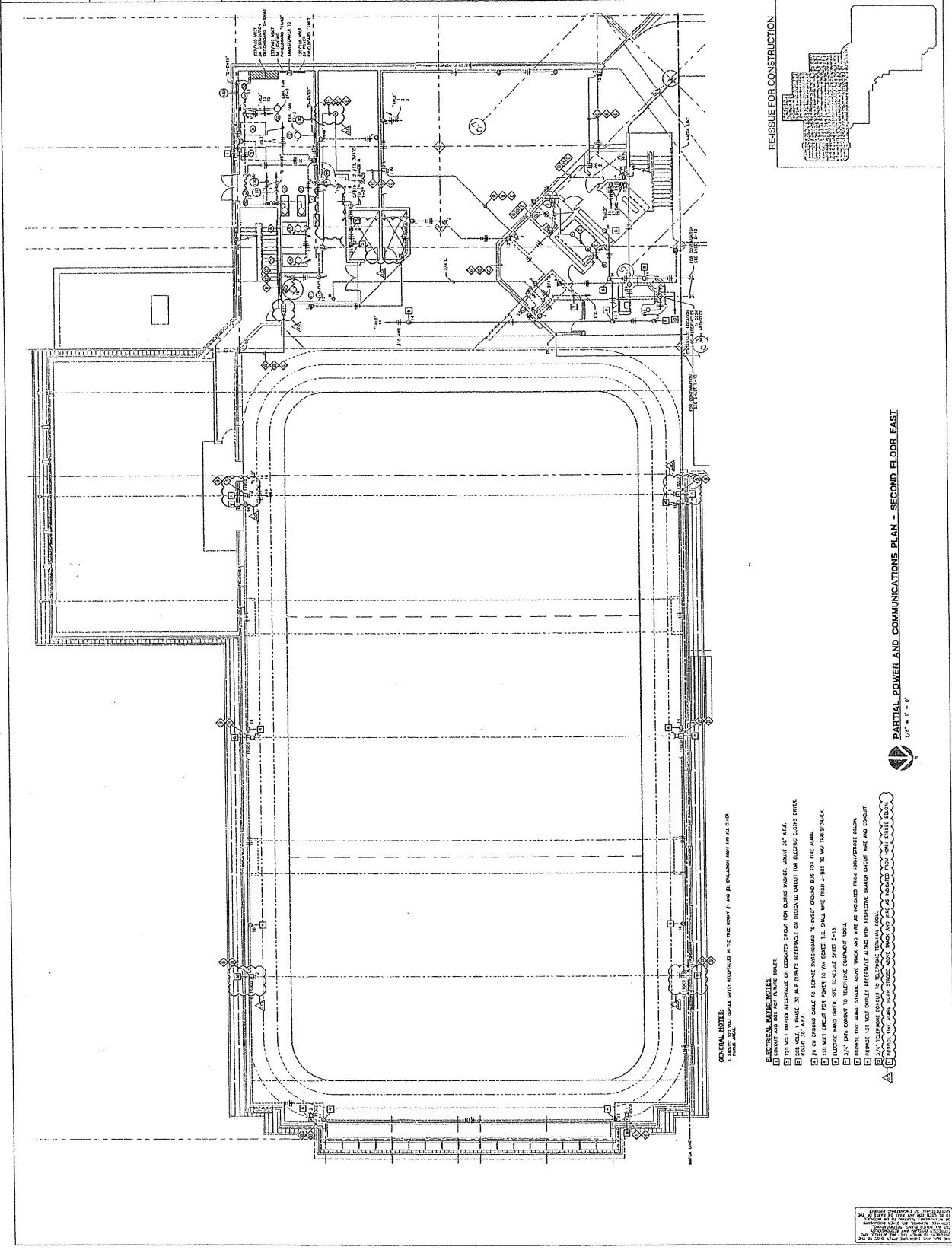
PARTIAL LIGHTING PLAN - SECOND FLOOR WEST  
 1/8" = 1' - 0"

Check dimensions to walls/doors/windows. If there is a discrepancy, the contractor shall be responsible for resolving it. The contractor shall be responsible for verifying the accuracy of the information shown on this drawing. The contractor shall be responsible for obtaining all necessary permits and approvals. The contractor shall be responsible for the safety of the work and the safety of the public.









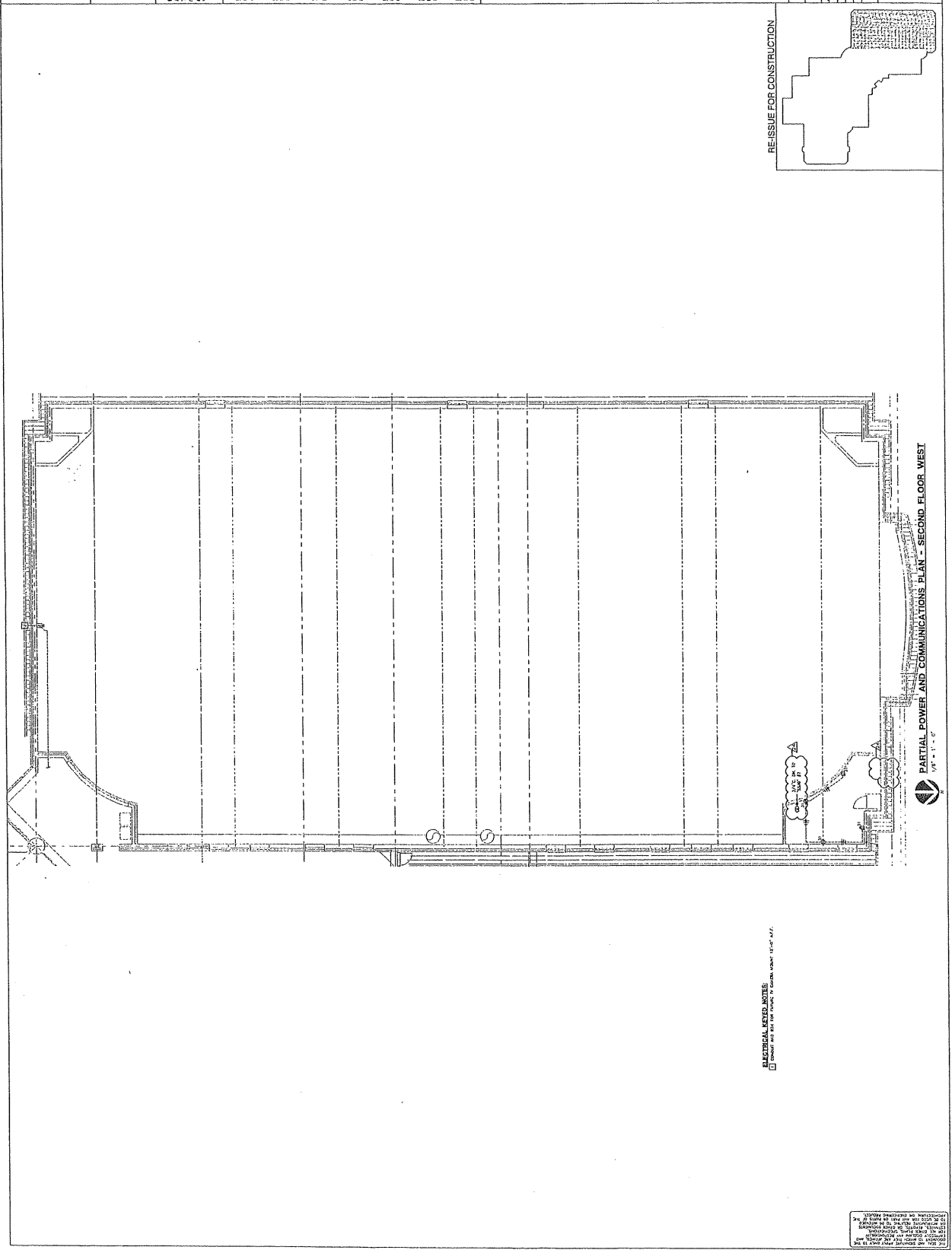
**RE-ISSUE FOR CONSTRUCTION**

**PARTIAL POWER AND COMMUNICATIONS PLAN - SECOND FLOOR EAST**  
 1/4" = 1' - 0"

- GENERAL NOTE:**  
 1. ALL WORK SHALL BE IN ACCORDANCE WITH THE CITY OF CHICAGO ELECTRICAL CODE AND THE NATIONAL ELECTRICAL CODE (NEC).
- ELECTRICAL NOTES:**
- 1. ALL WORK SHALL BE IN ACCORDANCE WITH THE CITY OF CHICAGO ELECTRICAL CODE AND THE NATIONAL ELECTRICAL CODE (NEC).
  - 2. ALL WORK SHALL BE IN ACCORDANCE WITH THE CITY OF CHICAGO ELECTRICAL CODE AND THE NATIONAL ELECTRICAL CODE (NEC).
  - 3. ALL WORK SHALL BE IN ACCORDANCE WITH THE CITY OF CHICAGO ELECTRICAL CODE AND THE NATIONAL ELECTRICAL CODE (NEC).
  - 4. ALL WORK SHALL BE IN ACCORDANCE WITH THE CITY OF CHICAGO ELECTRICAL CODE AND THE NATIONAL ELECTRICAL CODE (NEC).
  - 5. ALL WORK SHALL BE IN ACCORDANCE WITH THE CITY OF CHICAGO ELECTRICAL CODE AND THE NATIONAL ELECTRICAL CODE (NEC).
  - 6. ALL WORK SHALL BE IN ACCORDANCE WITH THE CITY OF CHICAGO ELECTRICAL CODE AND THE NATIONAL ELECTRICAL CODE (NEC).
  - 7. ALL WORK SHALL BE IN ACCORDANCE WITH THE CITY OF CHICAGO ELECTRICAL CODE AND THE NATIONAL ELECTRICAL CODE (NEC).
  - 8. ALL WORK SHALL BE IN ACCORDANCE WITH THE CITY OF CHICAGO ELECTRICAL CODE AND THE NATIONAL ELECTRICAL CODE (NEC).
  - 9. ALL WORK SHALL BE IN ACCORDANCE WITH THE CITY OF CHICAGO ELECTRICAL CODE AND THE NATIONAL ELECTRICAL CODE (NEC).
  - 10. ALL WORK SHALL BE IN ACCORDANCE WITH THE CITY OF CHICAGO ELECTRICAL CODE AND THE NATIONAL ELECTRICAL CODE (NEC).

These drawings are the property of Yarger Associates, Inc. and are not to be reproduced, stored in a retrieval system, or transmitted in any form or by any means, electronic, mechanical, photocopying, recording, or by any information storage and retrieval system, without the prior written permission of Yarger Associates, Inc.





GENERAL NOTES:  
 1. SEE ELECTRICAL SCHEDULE FOR SYMBOLS AND NOTATIONS.

THIS DRAWING IS THE PROPERTY OF YARGER ASSOCIATES, INC. AND IS NOT TO BE REPRODUCED WITHOUT THE WRITTEN CONSENT OF YARGER ASSOCIATES, INC.





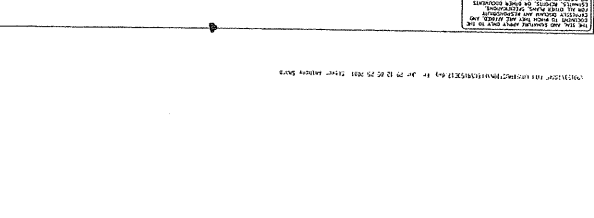
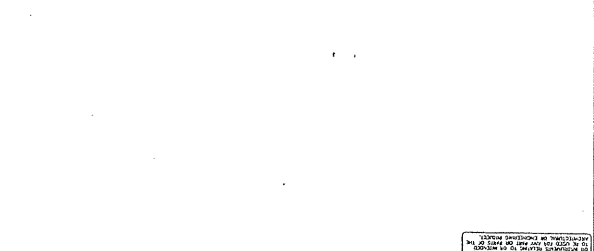
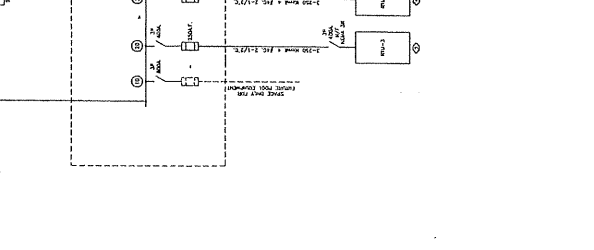
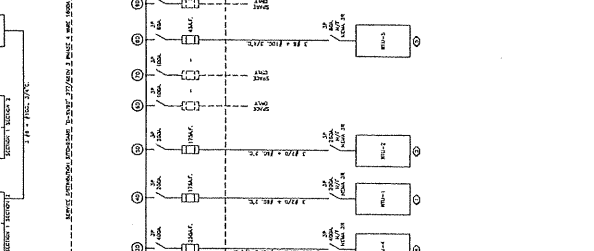
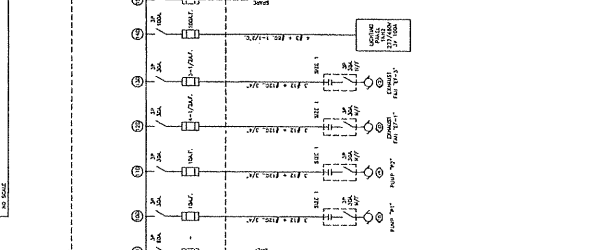
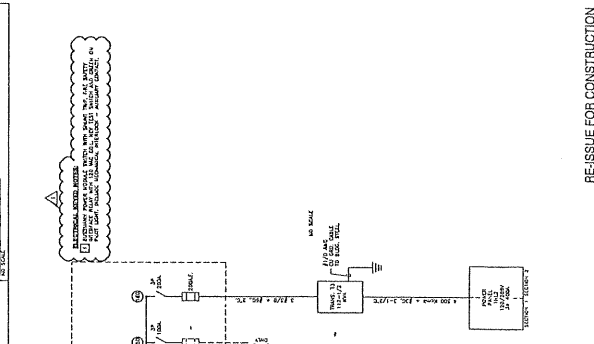
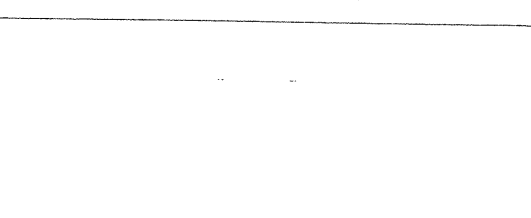
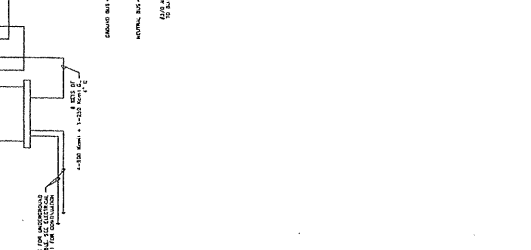
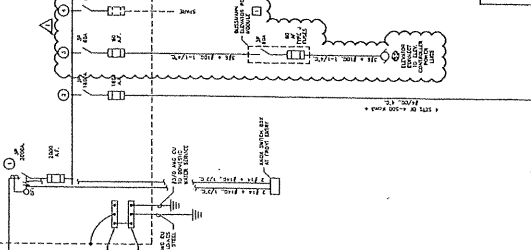
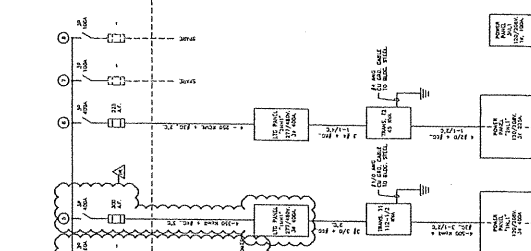
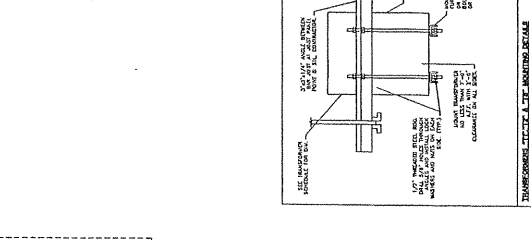
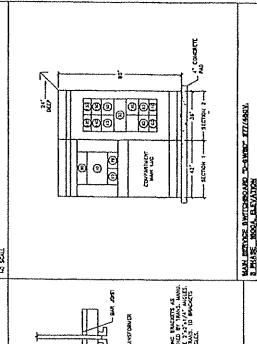
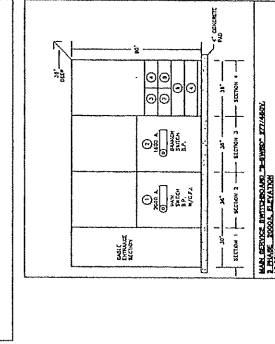




**ORLAND PARK RECREATION CENTER**  
 Village of Orland Park, Illinois  
 Department of Parks & Recreation  
 14550 Rhina Ave. Orland Park, Illinois 60462  
 ELECTRICAL POWER RISER

**Yanger**  
 Electrical Engineering  
 14550 Rhina Ave. Orland Park, Illinois 60462  
 Phone: 708/585-1100  
 Fax: 708/585-1101  
 www.yanger.com

TRANSFORMER SCHEDULE			
PARK MARK	KVA	PHASE	REMARKS
T1	150	3	150/208V 3PH 3W 4W
T2	150	3	150/208V 3PH 3W 4W
T3	150	3	150/208V 3PH 3W 4W
T4	150	3	150/208V 3PH 3W 4W
T5	150	3	150/208V 3PH 3W 4W
T6	150	3	150/208V 3PH 3W 4W
T7	150	3	150/208V 3PH 3W 4W
T8	150	3	150/208V 3PH 3W 4W
T9	150	3	150/208V 3PH 3W 4W
T10	150	3	150/208V 3PH 3W 4W
T11	150	3	150/208V 3PH 3W 4W
T12	150	3	150/208V 3PH 3W 4W
T13	150	3	150/208V 3PH 3W 4W
T14	150	3	150/208V 3PH 3W 4W
T15	150	3	150/208V 3PH 3W 4W
T16	150	3	150/208V 3PH 3W 4W
T17	150	3	150/208V 3PH 3W 4W
T18	150	3	150/208V 3PH 3W 4W
T19	150	3	150/208V 3PH 3W 4W
T20	150	3	150/208V 3PH 3W 4W



THIS DRAWING IS THE PROPERTY OF YANGER ELECTRICAL ENGINEERING. IT IS TO BE USED ONLY FOR THE PROJECT AND SITE SPECIFICALLY IDENTIFIED HEREON. IT IS NOT TO BE REPRODUCED, COPIED, OR TRANSMITTED IN ANY FORM OR BY ANY MEANS, ELECTRONIC OR MECHANICAL, INCLUDING PHOTOCOPYING, RECORDING, OR BY ANY INFORMATION STORAGE AND RETRIEVAL SYSTEM, WITHOUT THE WRITTEN PERMISSION OF YANGER ELECTRICAL ENGINEERING.

