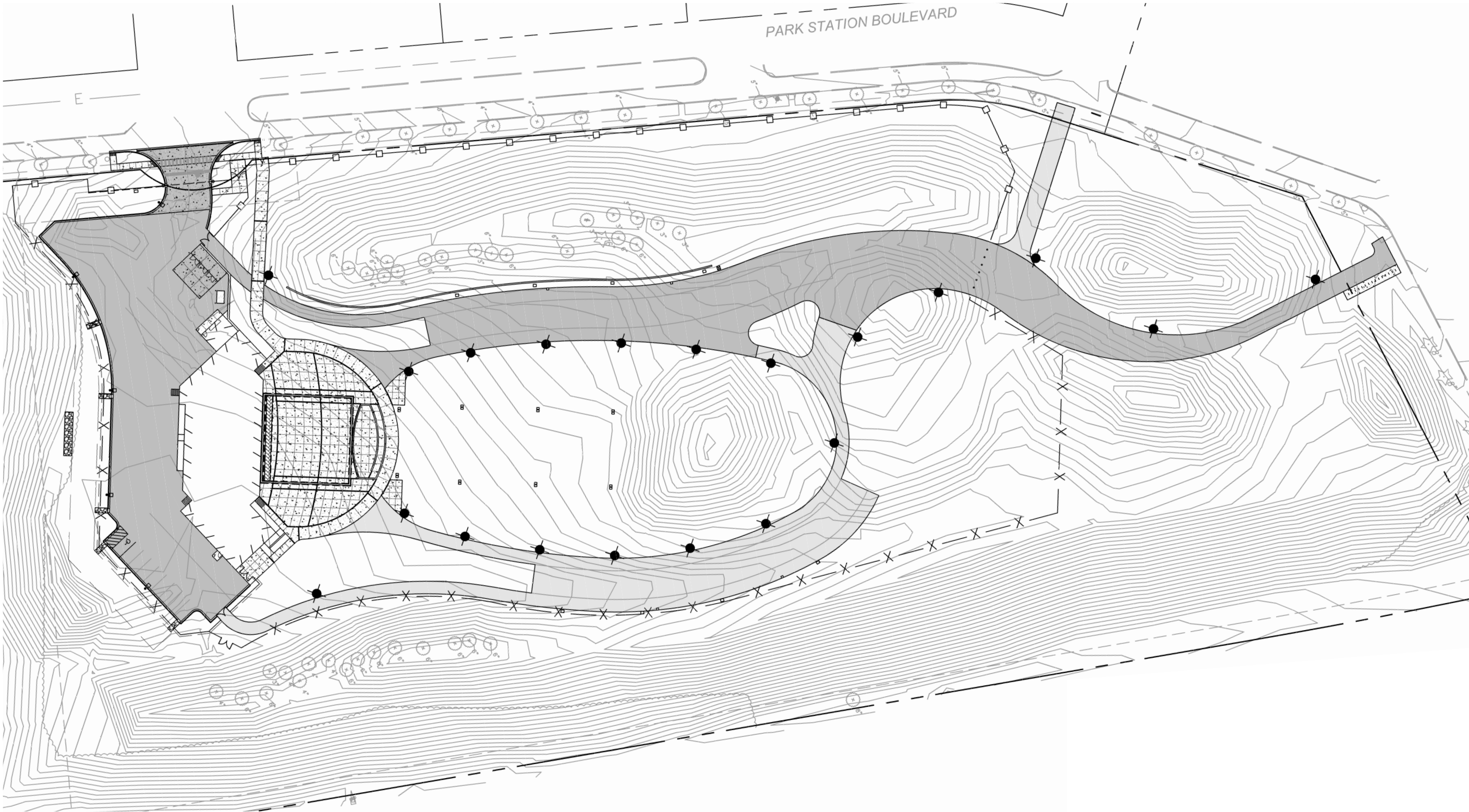


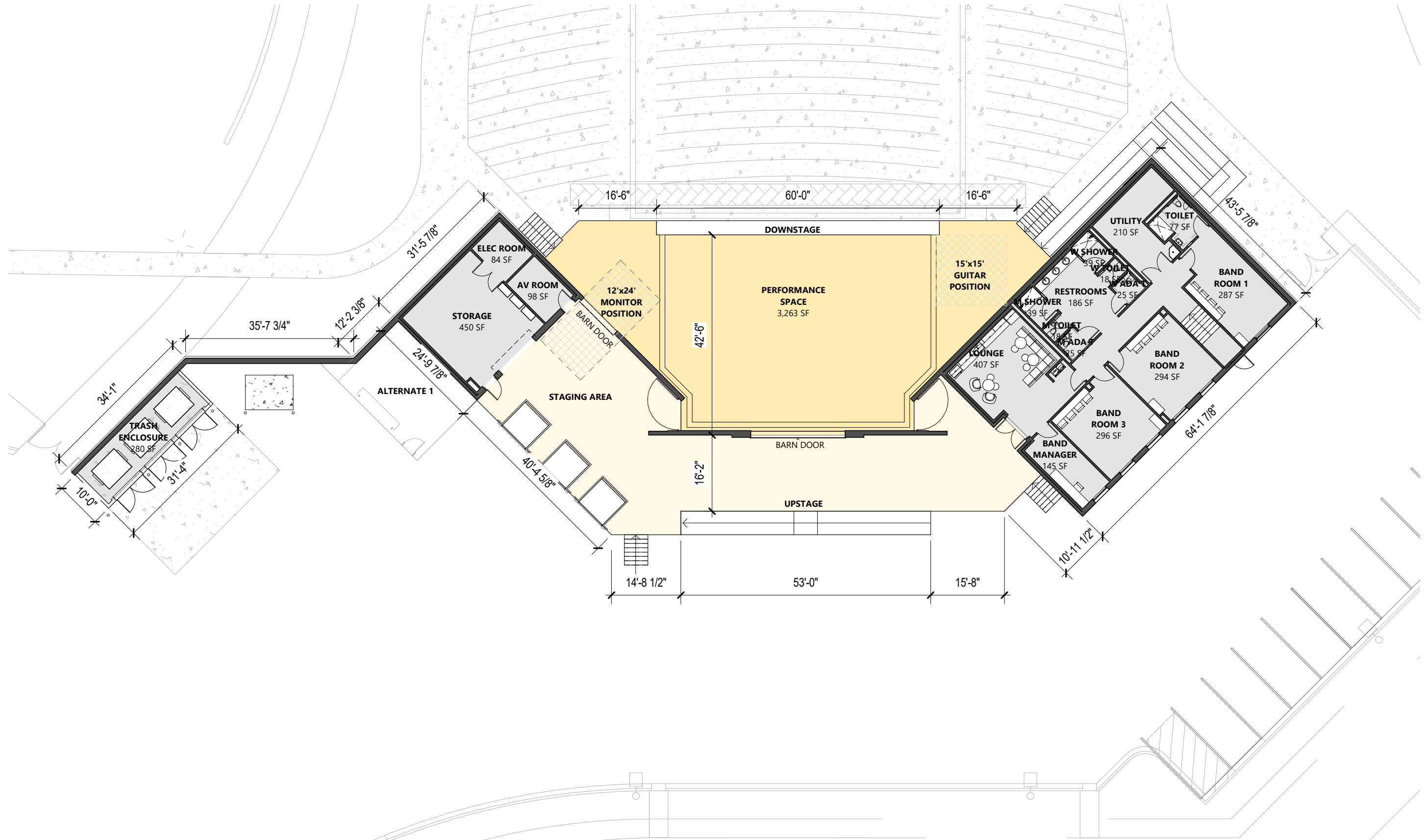


VILLAGE OF ORLAND PARK | **CENTENNIAL WEST CONCERT VENUE**  
DESIGN PRESENTATION | 03/07/2023

SITE PLAN

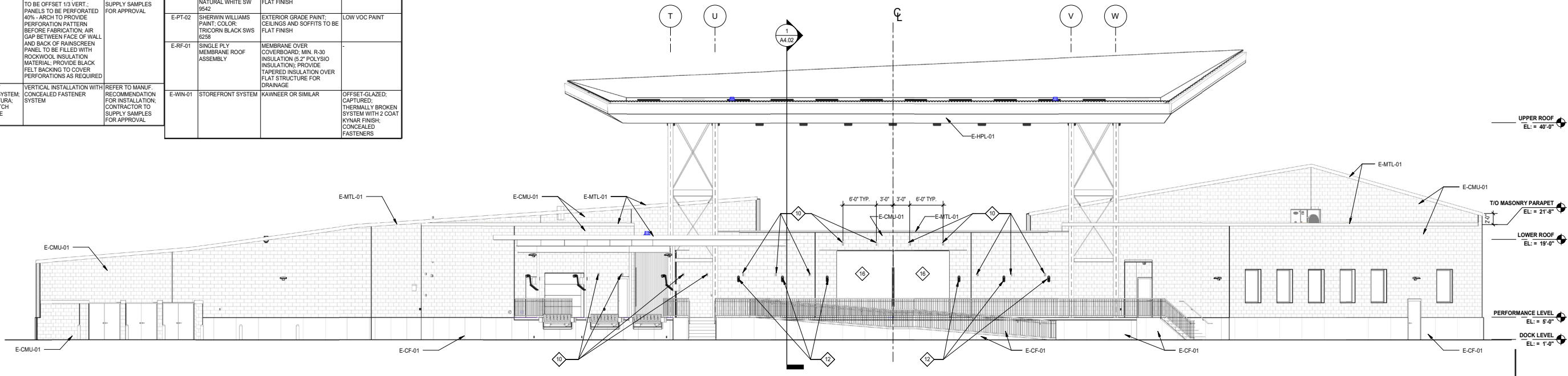


# STAGE FLOOR PLAN

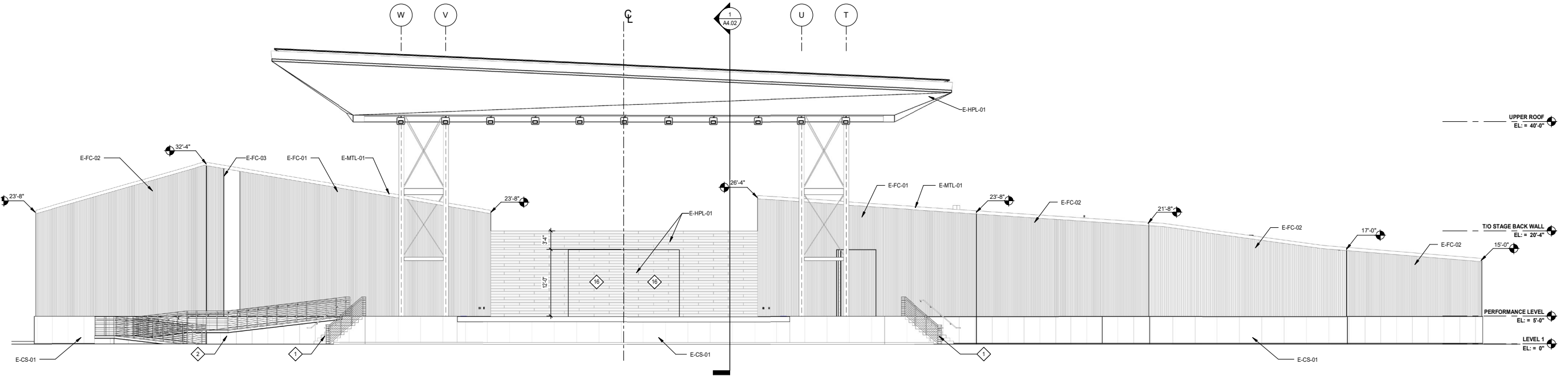


ELEVATIONS

SYMBOL	MATERIAL	DESCRIPTION	REMARKS	SYMBOL	MATERIAL	DESCRIPTION	REMARKS
E-CF-01	EXPOSED CONCRETE	SANDBLASTED FINISH; SCORED VERTICALLY @ 4' O.C.	CONTRACTOR TO SUPPLY SAMPLES FOR APPROVAL	E-HPL-01	RESYSTA CLADDING 40H; COLOR: C02 PALE GOLDEN (CONFIRM COLOR WITH ARCH BEFORE INSTALLATION)	WALL: HORIZONTAL INSTALLATION WITH CONCEALED FASTENER SYSTEM; 1/2" JOINTS BETWEEN PANELS; PANELS TO BE OFFSET 1/3 HOR.; AIR GAP BETWEEN FACE OF WALL AND BACK OF RAINSCREEN PANEL TO BE FILLED WITH ROCKWOOL INSULATION MATERIAL; HOLD PANEL 3" AFF CEILING; FOLLOW DIRECTION NOTED ON RCP	REFER TO MANUF. RECOMMENDATION FOR INSTALLATION; CONTRACTOR TO SUPPLY SAMPLES FOR APPROVAL
E-CMU-01	EXPOSED CMU	TRENDSTONE CONCRETE MASONRY UNITS FROM ECHELON	ARCH. TO SELECT COLOR FROM MANUF. FULL RANGE PRIOR TO INSTALLATION	E-MTL-01	PREFINISHED METAL COPING AND FASCIA; COLOR: MATCH E-FC-01	PAC-CLAD OR SIMILAR	REFER TO MANUF. RECOMMENDATION FOR INSTALLATION; CONTRACTOR TO SUPPLY SAMPLES FOR APPROVAL
E-CS-01	CAST STONE PANEL	ARCHITECTURALLY CAST STONE PANEL; THICKNESS: 3-5/8"; 1/2" VERTICAL JOINTS BETWEEN PANELS	ARCH. TO SELECT COLOR FROM MANUF. FULL RANGE PRIOR TO INSTALLATION	E-PT-01	SHERWIN WILLIAMS PAINT; COLOR: NATURAL WHITE SW 9542	EXTERIOR GRADE PAINT; CEILINGS AND SOFFITS TO BE FLAT FINISH	LOW VOC PAINT
E-FC-01	FIBER CEMENT RAINSCREEN SYSTEM	EQUITONE LINEA; COLOR: LT 20; 4" WIDE PANELS	1/2" JOINTS BETWEEN PANELS; PANELS TO BE OFFSET 1/3 VERT.; REFER TO MANUF. RECOMMENDATION FOR INSTALLATION; CONTRACTOR TO SUPPLY SAMPLES FOR APPROVAL	E-PT-02	SHERWIN WILLIAMS PAINT; COLOR: TRICORN BLACK SWS 0258	EXTERIOR GRADE PAINT; CEILINGS AND SOFFITS TO BE FLAT FINISH	LOW VOC PAINT
E-FC-02	FIBER CEMENT RAINSCREEN SYSTEM	EQUITONE LINEA; COLOR: LT 20; 2" WIDE PANELS	VERTICAL INSTALLATION WITH CONCEALED FASTENER SYSTEM; 1/2" JOINTS BETWEEN PANELS; PANELS TO BE OFFSET 1/3 VERT.; 40% - ARCH TO PROVIDE PERFORATION PATTERN BEFORE FABRICATION; AIR GAP BETWEEN FACE OF WALL AND BACK OF RAINSCREEN PANEL TO BE FILLED WITH ROCKWOOL INSULATION MATERIAL; PROVIDE BLACK FELT BACKING TO COVER PERFORATIONS AS REQUIRED	E-RF-01	SINGLE PLY MEMBRANE ROOF ASSEMBLY	MEMBRANE OVER COVERBOARD; MIN. R-30 INSULATION (5.2" POLYSIO INSULATION); PROVIDE TAPERED INSULATION OVER FLAT STRUCTURE FOR DRAINAGE	
E-FC-03	FIBER CEMENT RAINSCREEN SYSTEM	EQUITONE NATURA; COLOR TO MATCH E-FC-01; 4" WIDE PANELS	VERTICAL INSTALLATION WITH CONCEALED FASTENER SYSTEM	E-WIN-01	STOREFRONT SYSTEM	KAWNEER OR SIMILAR	OFFSET-GLAZED; CAPTURED; THERMALLY BROKEN SYSTEM WITH 2 COAT KYNAR FINISH; CONCEALED FASTENERS

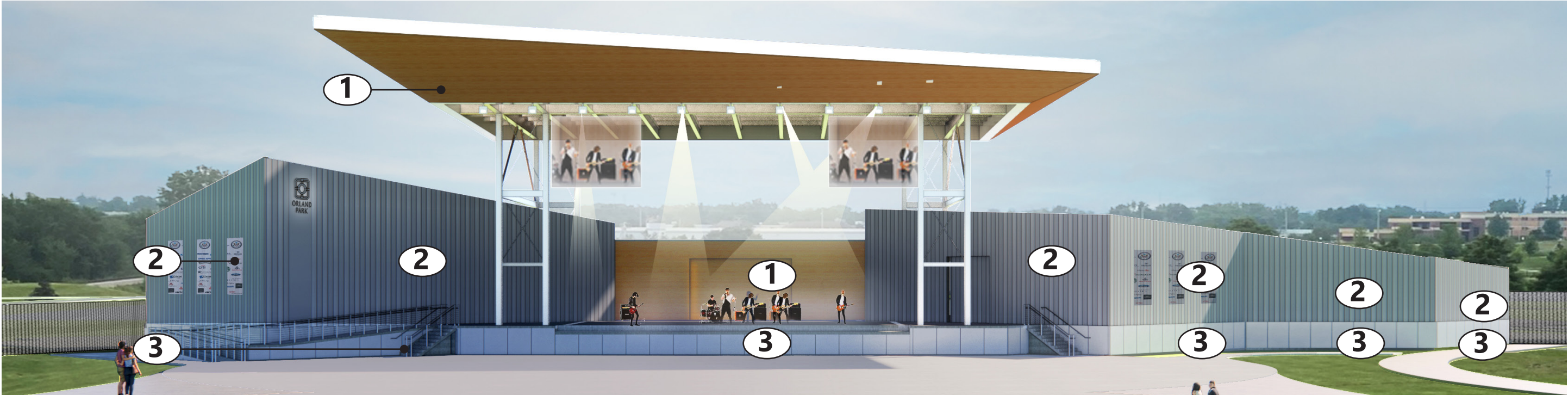


SOUTH ELEVATION



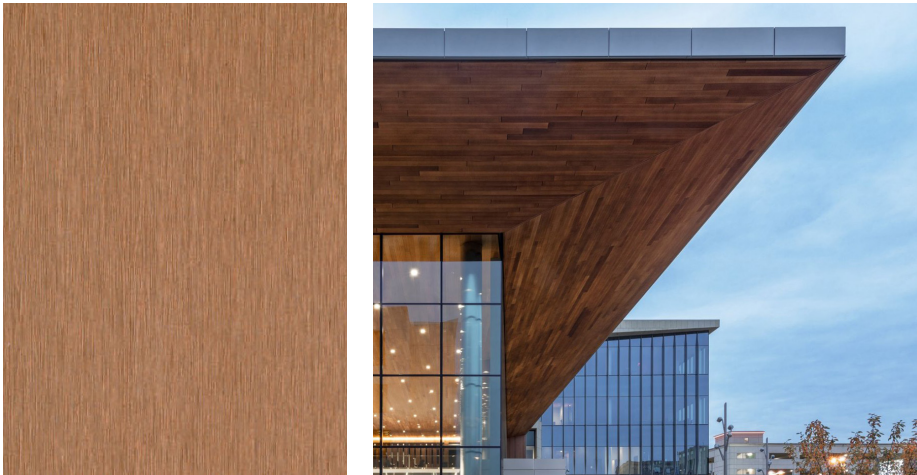
NORTH ELEVATION

FRONT VIEW - EXTERIOR MATERIALS



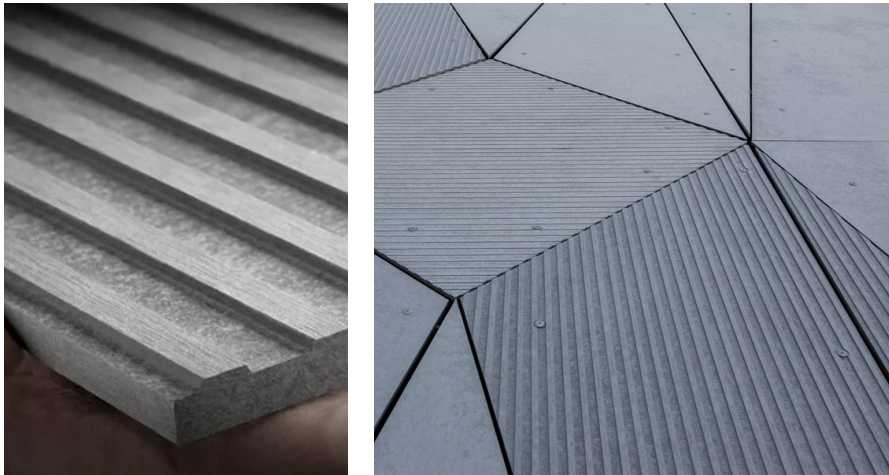
1 SIMULATED WOOD

RESYSTA - PALE GOLDEN  
(WWW.RESYSTAUSA.COM)



2 RAINSCREEN (FIBER CEMENT PANELS)

EQUITONE LINEA LT20  
(WWW.EQUITONE.COM)

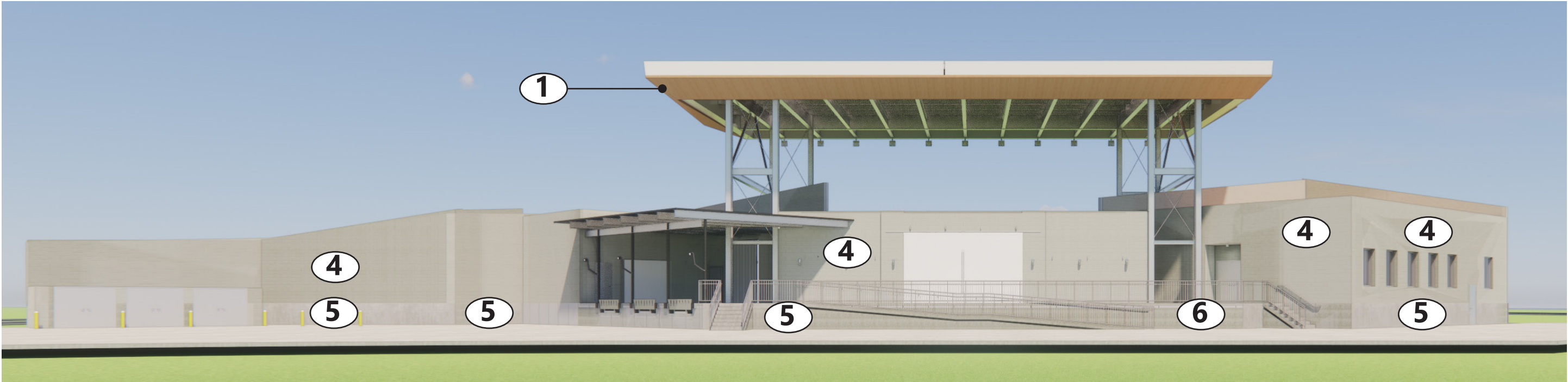


3 CONCRETE BASE

SANDBLASTED CONCRETE WITH VERTICAL SCORING

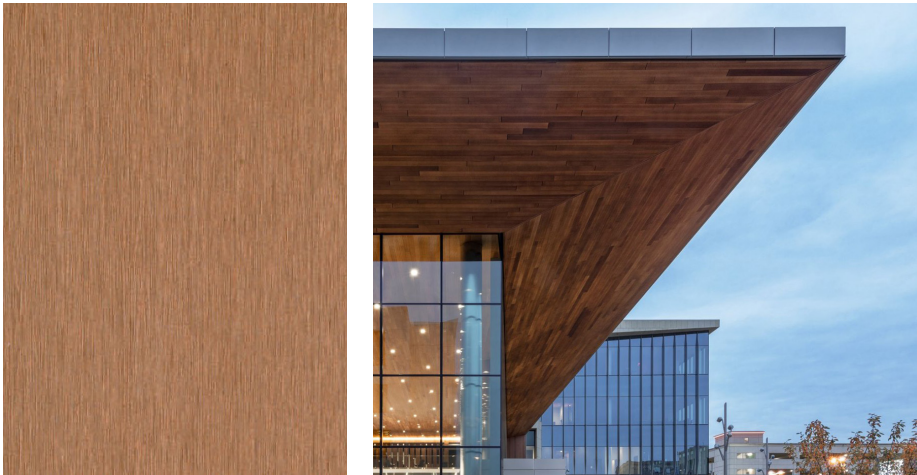


REAR VIEW - EXTERIOR MATERIALS



1 SIMULATED WOOD

RESYSTA - PALE GOLDEN  
(WWW.RESYSTAUSA.COM)



4 MASONRY WALL

ECHOLON SPLIT FACE CMU - CHARCOAL SHEFFIELD  
(HTTPS://WWW.ECHELONMASONRY.COM)



5 CONCRETE BASE

SANDBLASTED CONCRETE WITH VERTICAL SCORING



IMAGE OF SELECT MATERIALS







